

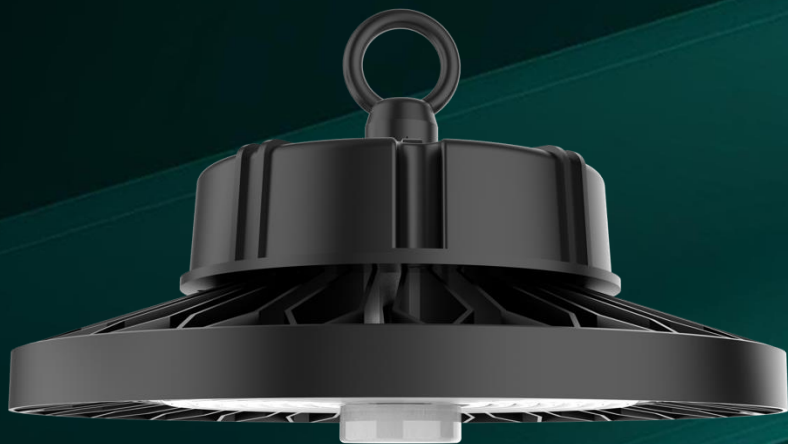


genesis^{one}



Lynx 08 Polar

LED High bay



Lynx 08 Polar

The Lynx 08 Polar Highbay is a robust, high-quality LED fitting designed for exceptional performance and durability. Boasting an ultra-efficient system efficacy of up to 180lm/W, it features premium Lumileds 5050 LED chips, an Moso driver, and an innovative private mould for effective heat dissipation. Its shatterproof polycarbonate lens, epoxy anti-corrosion coating, and professionally designed aluminum housing ensure superior protection against dust, moisture, and harsh environments. With a wide beam reflector for enhanced uniformity and reduced glare, it provides a comfortable working environment. Offering over 170,000 hours to L70 and backed by a 5-year warranty, the Lynx 08 Polar Highbay is a reliable lighting solution for demanding applications.





Innovative design to maximise airflow and minimise dust



Engineered to optimize airflow for superior heat management and minimize dust buildup. With its innovative design, the Lynx Polar housing allows for better ventilation, ensuring LEDs operate at peak efficiency, while reducing maintenance needs by preventing the accumulation of dust. Ideal for harsh outdoor environments, it combines durability with energy efficiency, delivering long-lasting performance and reduced operational costs.

High efficiency and energy saving



The Lynx 08 Polar LED High Bay delivers exceptional energy savings through its superior lumen output of up to 180lm/W. By achieving the required lux levels with lower wattage, it significantly reduces energy consumption while maintaining optimal lighting performance. This efficiency translates into lower operational costs and a more sustainable lighting solution for commercial and industrial applications.

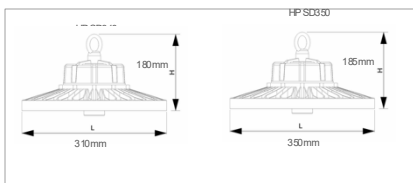
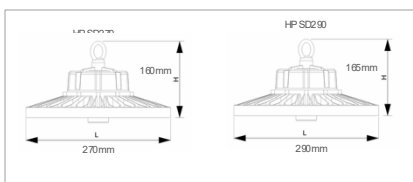
Intelligent lighting control options



The Lynx 08 Polar LED High Bay offers advanced intelligent lighting controls for enhanced efficiency and flexibility. Features include DALI dimming for precise light level adjustment, integrated movement sensors for automated operation, and Zigbee connectivity for seamless wireless control. These smart technologies optimize energy usage, reduce costs, and provide a customizable lighting experience tailored to any application.



MODEL	Lynx 08 Polar Series
WATTAGE	100W 120W 150W 180W 200W 240W
CRI	70 80
CCT	3000K 4000K 5000K 5700K
BEAM ANGLE	60° 90° 120°
MATERIAL	Black
	Die-casting aluminum
DRIVER	Constant current remote LED driver included
APPLICATION	Warehouses, Manufacturing, Distribution Centres, etc.



Model	Watts	DxH(mm)	Overall(mm)	Lumen(lm/w)
HP SD270	80W	ø270xH160	ø270	180
	100W	ø270xH160	ø270	180
HP SD290	120W	ø290xH165	ø290	180
	150W	ø290xH165	ø290	180
HP SD310	180W	ø310xH180	ø310	180
	200W	ø310xH180	ø310	180
HP SD350	240W	ø350xH185	ø350	180

OPTICAL DATA

Light Source	SMD 2835 Lumileds/Sanan
Correlated Colour Temperature (CCT)	3000K ~ 5700K
Colour Rendering Index (CRI)	>70 standard; >80 optional
SDCM	<3
Beam Angle	120° (standard) 60° 90° (Optional)
UGR	<25

PERFORMANCE

System Wattage	100W 120W 150W 180W 200W 240W
Luminous Flux(±10%)	18000 21600 27000 32400 36000 43200
Luminaire Efficacy	180lm/W

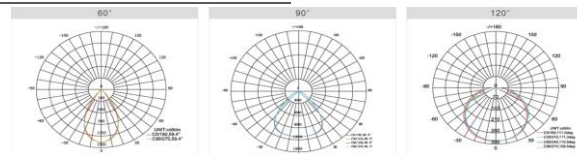
OPERATING CONDITIONS

Operating Temperature (Ta)	-20° to +55°C
Mounting Options	Suspended Surface Wall

HOUSING & FINISH

Housing Material	Die-cast aluminum
Reflector	-
Optic Material	Polycarbonate
Housing Finish	Epoxy anti-corrosion
Finish Colour	Black
Weight (Kg)	2.8kg 3.2kg 3.6kg 4.5kg
IP Rating	IP65
IK Rating	IK10

PHOTOMETRIC DATA



60°

90°

120°

ELECTRICAL DATA

Protection Class	Class 1
Nominal Voltage	AC100-277V 50-60 Hz
Power Factor	>0.95
Surge Protection (Kv)	-
Control Protocol	DALI, 1-10V
Sensor	Microwave Motion Sensor Merrytek MC031V
Emergency	-
Power Supply Driver Type	Mosoj Inventronics Lifud Constant Current (CC)
Total Harmonic Distortion (THD)	IEC 61000-3-2 Class C <20%
Inrush Current	65A
Driver Lifetime	>100,000hrs
Electromagnetic Compatibility (EMC)	EN 55015:2019/A11:2020, EN 61000 3-2:2019, EN 61000-3- 3:2013, EN 61547:2009, EN 62493:2015

TECHNICAL DATA

Certifications	ENEC/CB/SAA/TUV- CE/ROHS
Warranty	5 Year
Documentation	LM-79 LM-80 ISTMT TM- 21
Testing Standard	LM-79-19 (all measurements in ISO17025 accredited laboratory)

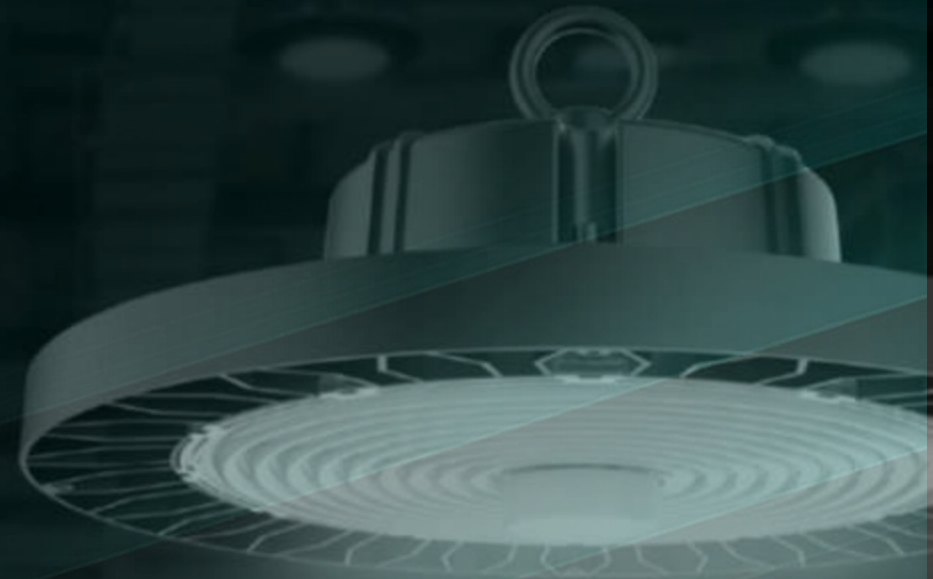
LIFETIME OF THE LEDS @ TA 25°C

Lifetime @L70 (Tm-21)	>170,000hrs
Lifetime @L80 (Tm-21)	>102,000hrs
Lifetime @L90 (Tm-21)	>52,000hrs
Switching Cycles	<100,000hrs

ORDERING INFORMATION

Example: HPS-N-150-50-120-300

Model	Dimming	Wattage	CCT	Beam	Overall
HPS	N	150W	50	120	300
HPS	N NonDim	80W	30 3000K	60°	270
	T Triac Dim	100W	40 4000K	90°	290
	V 0/1-10V Dim	120W	50 5000K	120°	310
	D DALI Dim	150W	57 5700K		350
		180W			
		200W			
		240W			



Genesis One Lighting (Pty) Ltd

www.genesisone.co.za

sales@genesisone.co.za

Unit 27 Northlands Retail Park

210 Epsom Ave

Northriding

2169