



LED Ceiling Light
Eclipse 149 Series



Introduction

The Eclipse 149 is an ultra thin flush ceiling light made from VO (850°) fire rated material. The Eclipse 149 has several functions that can be selected as options such as changeable CCT, microwave sensor and Triac dimming.

Features

- Super slim: 33mm thickness
- Decorative nickel brushed frame (optional)
- Lamp base and LED base can be separated
- Interchangeable CCT(3000K+4000K+5700K) with slide switch
- Quick connector and loop in / out cable entry
- Internal flicker free driver, non-dim and Triac dim available
- Microwave sensor available
- Life hours >50,000hrs L70

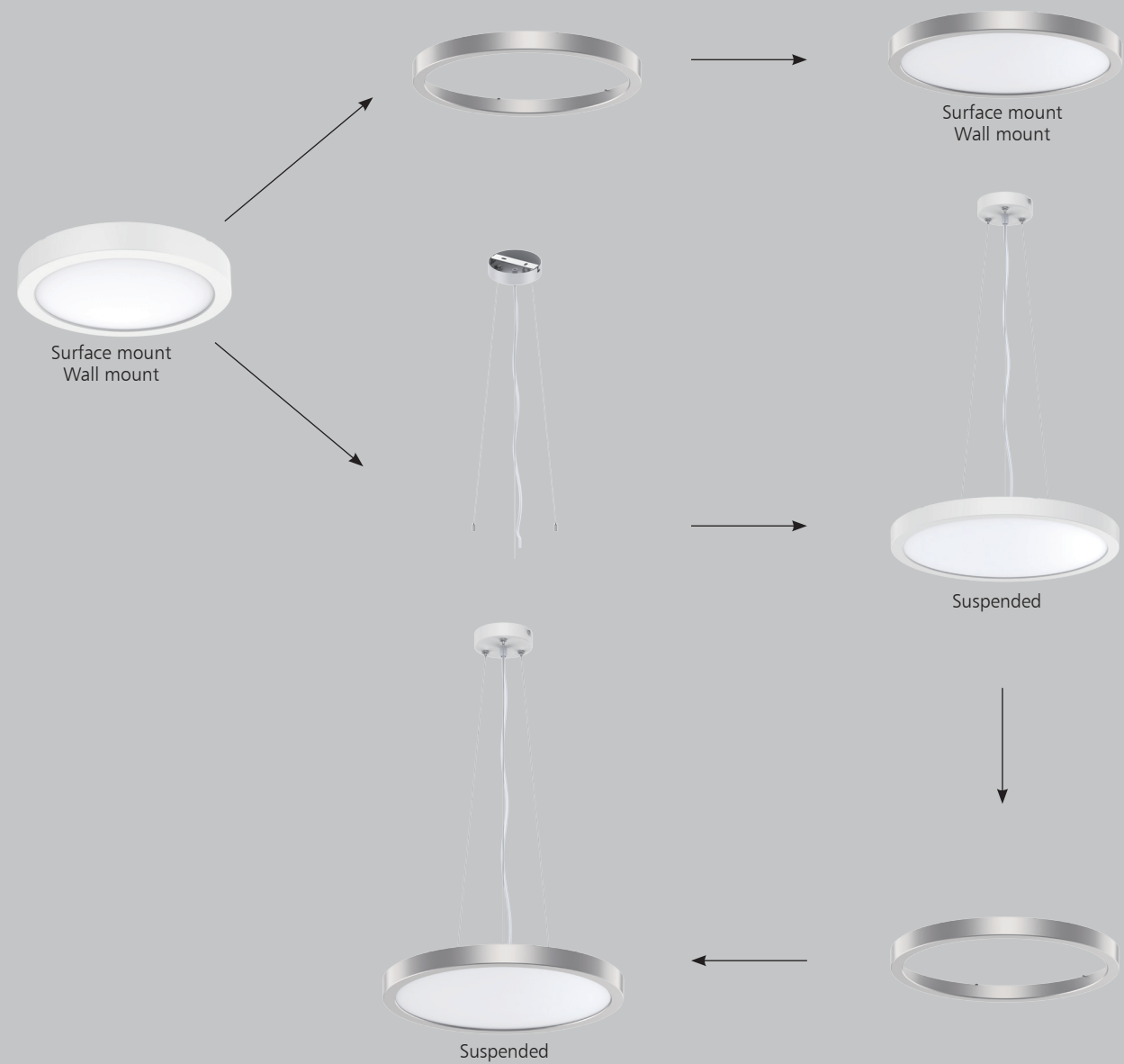
Application Areas

It is designed for general lighting applications in offices, supermarkets, shops, schools, etc.





Metal decorative ring optional
Not suitable for sensor model wall mounted installation, sensing effect will be affected



Technical Data Sheet

Code No.			CL250N/12**149	CL300N/18**149	CL400N/25**149
Dimension(mm)			Ø250*33	Ø300*33	Ø400*33
Cutout (mm)			-		
Watt(W)			12W	18W	25W
Rated Input Voltage(V)			AC230V		
Input Voltage(V)			AC220-240V		
LED Module Input			-		
Light Source			SMD		
SDCM			<6		
CCT(K)			1-CCT: 3000K/4000K/5000K/5700K 3-CCT: 3000K + 4000K + 5700K		
CCT Selection DIP Switch			YES		
Luminous Flux (lm) ±5%	Non-DIM	1-CCT	960-1050	1620-1730	2100-2250
	DIM		940-1020	1560-1730	2025-2250
	Non-DIM	3-CCT	960-1050	1620-1730	2100-2250
	DIM		940-1020	1560-1730	2025-2250
CRI			80		
Beam Angle (°)			120°		
UGR			-		
LED Driver			Built-in		
Dimming Option			Triac		
Sensor			NO	Microwave sensor	
Emergency Kits			-		
Electrical Class			Class II		
Ingress Protection (IP Rating)			IP20		
Impact Resistance (IK Rating)			-		
Product Finishing(Base)			White RAL 9016		
Materials of Optics			PMMA+PS		
Materials of Housing			PC		
Lifetime (hr)			50,000h		
Glow wire test (°C)			650°C		
Operating Temp. (°C)			-10°C ~40°C		
Storage Temp. (°C)			-10°C ~50°C		
Installation			Surface mount/Wall mount/Suspended		

WW

NW

CW

Color changeable

((()))

Sensor

Triac Dimmable

120°

IP20

PF 0.9

CRI ≥80

50000

HOURS

ACC-AL149-10/12/16-NK-00

ACC-AL149-WT-0200

Measurement

Code	Dimension(mm)			Size(mm)	Product Weight (Kg)		Package weight (Kg)		Carton Size(cm)	Qty/CTN	20GP (pcs)	40HQ (pcs)
	A	B	C		N.W/PC	G.W/PC	N.W/CTN	G.W/CTN				
AL149-10-12W	Ø250	33	Ø208	Ø250*33	0.7	0.85	8.4	10.2	515*265*275	12	8448	19872
AL149-12-18W	Ø300	33	Ø258	Ø300*33	1	1.15	12	13.8	515*315*325	12	6720	16032
AL149-16-25W	Ø400	33	Ø358	Ø400*33	1.5	1.7	9	10.2	420*260*425	6	3510	8712
ACC-AL149-10-NK-00	Ø251	36.5	32	Ø251*36.5	0.16	0.25	1.92	4	52*23*27	12	10368	23760
ACC-AL149-12-NK-00	Ø301	36.5	32	Ø301*36.5	0.2	0.3	2.4	5	62*23*32	12	7416	17676
ACC-AL149-16-NK-00	Ø401	36.5	32	Ø401*36.5	0.3	0.4	1.8	4	41.5*23*42	6	3990	10044
ACC-AL149-WT-0200	Ø100	1500	25	Ø100*1500	0.27	0.29	13.5	14.5	55*55*16	50	29200	69800

Driver Datasheet(Non-dimmable)

Total load wattage		12W		18W		25W					
Output	Output Voltage range	DC60-75V									
	Rated output current	160mA		230mA		330mA					
	Line Regulation	±5%									
	Setup, Rise Time	<0.5S									
	Flickering Index	3%,IEEE1789 NO RISK									
Input	Input Voltage	AC200-240V									
	Rated Input Voltage(V)	AC230V									
	Frequency	50/60Hz									
	Input Current	≤0.07A		0.1A		0.14A					
	Rated Input Current	≤0.06A		0.09A		0.12A					
	Power Factor	0.9									
	THD	-				<20% @230V					
	Efficiency	≥85%									
	No load wattage	<0.5W									
Protection	Short circuit protection	Pass									
	Over voltage protection	Pass									
	Over temperature protection	Pass									
Safety &EMC	Withstand voltage	-									
	Isolation Resistance	I/P-O/P: 500VDC, ≥100M Ω									
	Surge	IEC/EN61000-4-5(P<25W; L-N:500V)				IEC/EN61000-4-5 (P≥25w L-N:1KV)					
	EMC Emission	EN55015, EN61000-3-2									
	EMC Immunity	EN61000-4-2,3,4,5,6,8,11; EN61547									

Driver Datasheet(Triac Dimmable)

Output	Output Voltage range	DC60-75V				
	Rated output current	140mA	230mA	320mA		
	Line Regulation	±5%				
	Setup, Rise Time	<0.5S		<1S		
	Flickering Index	<5%(NO RISK)				
Input	Input Voltage	AC200-240V				
	Rated Input Voltage(V)	AC230V				
	Frequency	50Hz				
	Input Current	≤0.07A	≤0.1A	≤0.14A		
	Rated Input Current	≤0.06A	≤0.09A	≤0.12A		
	Power Factor	0.9				
	THD	-		<20% @230V		
	Efficiency	81%	≥84%			
	No load wattage	≤1W				
Protection	Short circuit protection	Pass				
	Over voltage protection	Pass				
	Over temperature protection	Pass				
Safety &EMC	Withstand voltage	-				
	Isolation Resistance	-				
	Surge	IEC/EN61000-4-5(P<25W; L-N:500V)		IEC/EN61000-4-5 (P≥25w L-N:1KV)		
	EMC Emission	EN55015, EN61000-3-2				
	EMC Immunity	EN61000-4-2,3,4,5,6,8,11; EN61547				

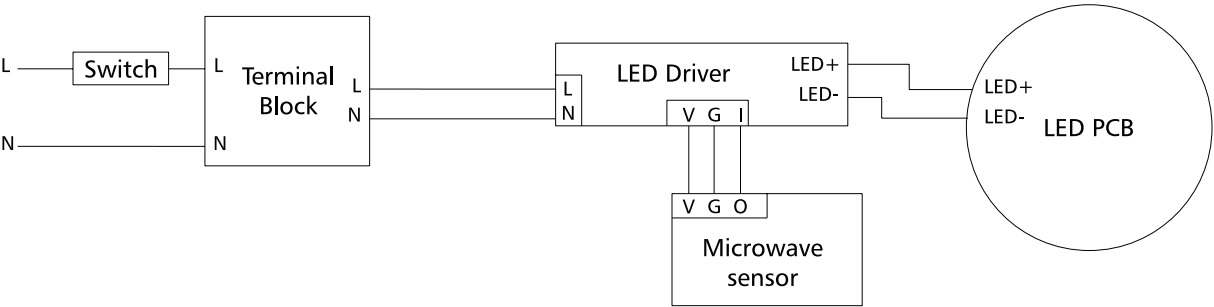
Driver Datasheet(Non-dimmable for sensor)

Total load wattage		18W		25W			
Output	Output Voltage range	DC60-75V					
	Rated output current	220mA		320mA			
	Line Regulation	±5%					
	Setup, Rise Time	<0.5S					
	Flickering Index	3%(NO RISK)					
Input	Input Voltage	AC85-265V					
	Rated Input Voltage(V)	AC100-240V					
	Frequency	50/60HZ					
	Input Current	≤0.24A		≤0.33A			
	Rated Input Current	≤0.2A		≤0.28A			
	Power Factor	0.9					
	THD	<20% @230V					
	Efficiency	84%					
	No load wattage	<0.7W					
Protection	Short circuit protection	Pass					
	Over voltage protection	Pass					
	Over temperature protection	Pass					
Safety &EMC	Withstand voltage	-					
	Isolation Resistance	-					
	Surge	IEC/EN61000-4-5(P<25W; L-N:500V		IEC/EN61000-4-5 (P≥25w L-N:1KV)			
	EMC Emission	EN55015, EN61000-3-2					
	EMC Immunity	EN61000-4-2,3,4,5,6,8,11; EN61547					

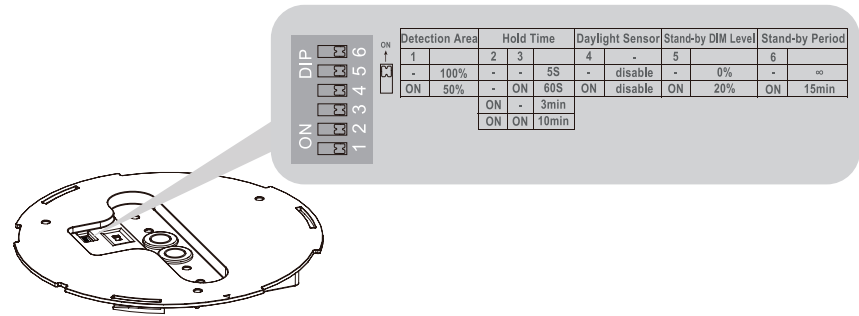
Datasheet (Sensor S7)

Operating Voltage	DC7-12V	
Power consumption	0.5W±0.2W	
Microwave frequency	5.8GHz±75MHz, ISM wave band	
Transmission power	<0.5mW	
Detection angle	140°	
Detection Area	4-6M	
Hold time	5S/60S/3min/10min	
Daylight sensor	N/A (Disable)	
Stand-by DIM Level	0% / 20%	
Stand-by Period	15min / ∞	
Dimming Range	-	
Microwave ON/OFF function	-	
Installation Height	Recommended Installation Height: Wall mounted height 1.8m. Ceiling mounted height 3m.	
Operating temperature(°C)	-20℃ ~60℃	

Wiring Diagram



Daylight & Microwave Sensor:



factory setting:

Detection Area	Hold Time	Daylight Sensor	Stand-by DIM Level	Stand-by Period
100%	5S	N/A (Disable)	0%	∞

Sensor Setting:

Detection area:

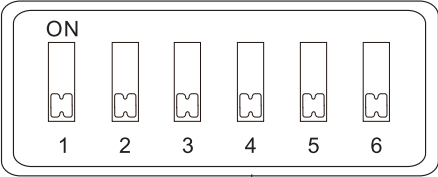
Detection area can be reduced by selecting the combination on the DIP switches to fit precisely each application.

Detection Area	
1	
-	100%
ON	50%

Notice 1: The test is based on a height of 3m, the radius is the ground detect distance,which can be selected through the slide switch.

Notice 2: The detective range is measured by human body whose stature is around 1.6-1.7M with medium size and traveling speed is around 1.0-1.5M per second. If the stature, bodily form and traveling speed are changed,then the detective range will be changed accordingly.

Notice 3: Test result will be highly influenced by test environment, the more open environment, the closer detect distance; the narrower environment, the longer detect distance. The detectormay do self-excitation in a narrow environment.



N/A (Disable)

Hold Time		
2	3	
-	-	5S
-	ON	60S
ON	-	3min
ON	ON	10min

Hold time:

Refers to the time period the lamp remains at 100% illumination after no motion detected.
Notice 1: The hold time can be selected by the slide switch.
The hold time counting should be started after the sensor is powered on and initialized.

Stand-by DIM Level	
5	
-	0%
ON	20%

Stand-by dimming level:

This is the dimmed low light output level you would like to have after the hold-time in the absence of people.

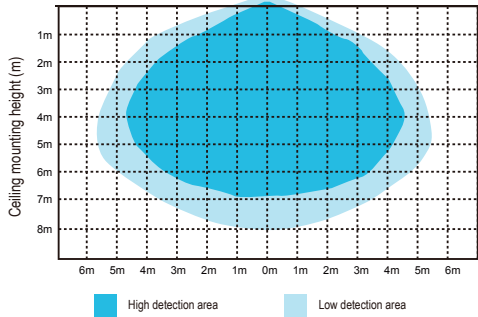
Stand-by Period	
6	
-	∞
ON	15min

Stand-by period:

This is the time period you would like to keep at the low light output level before it is completely switched off in the long absence of people.

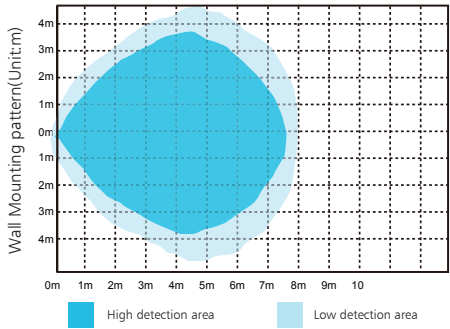
Induction Range

Ceiling Mounting pattern(Unit: m)



Metal decorative ring is not suitable for sensor model wall mounted installation, sensing effect will be affected

Wall Mounting pattern(Unit:m)



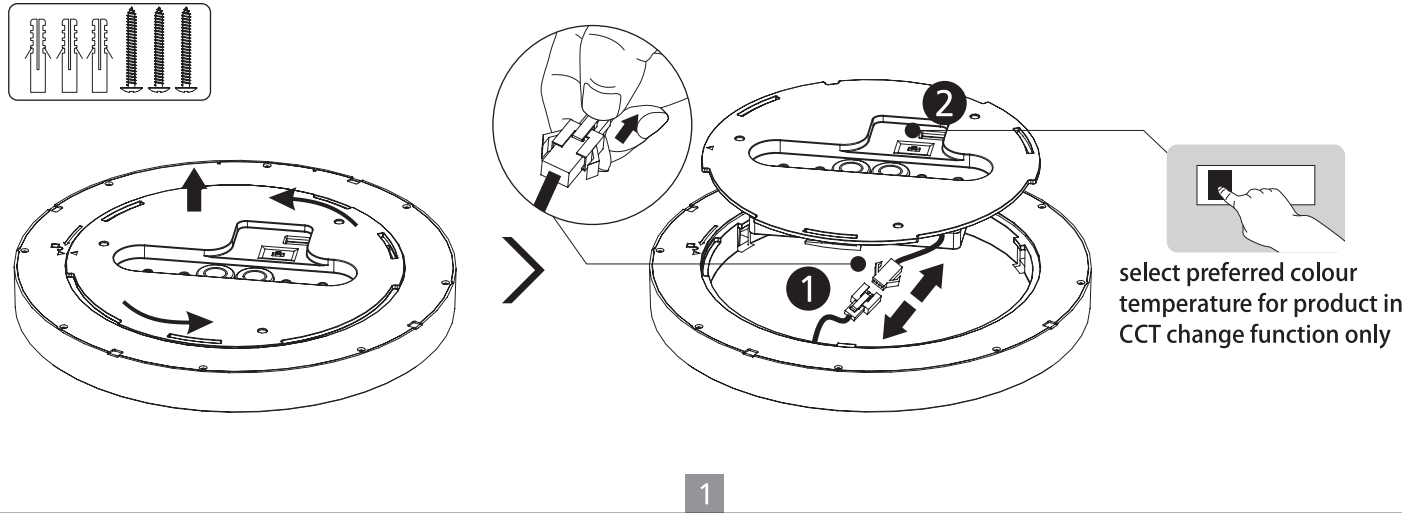
Installation Instruction

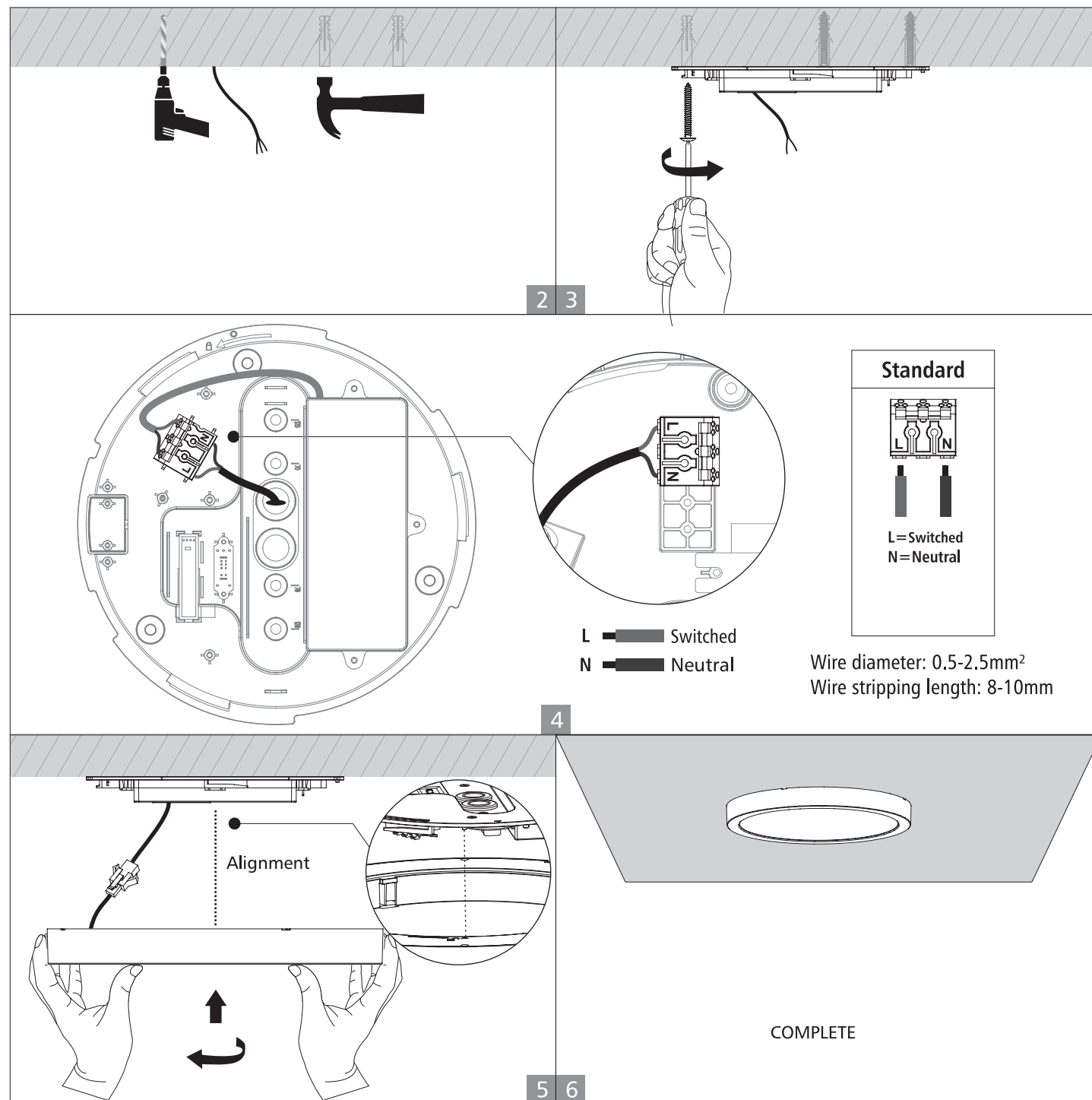
WARNING

- 1.Switch off before installation.
- 2.Switch on only after complete installation and examination of the circuit.
- 3.Professional electrician for installation and maintenance only.

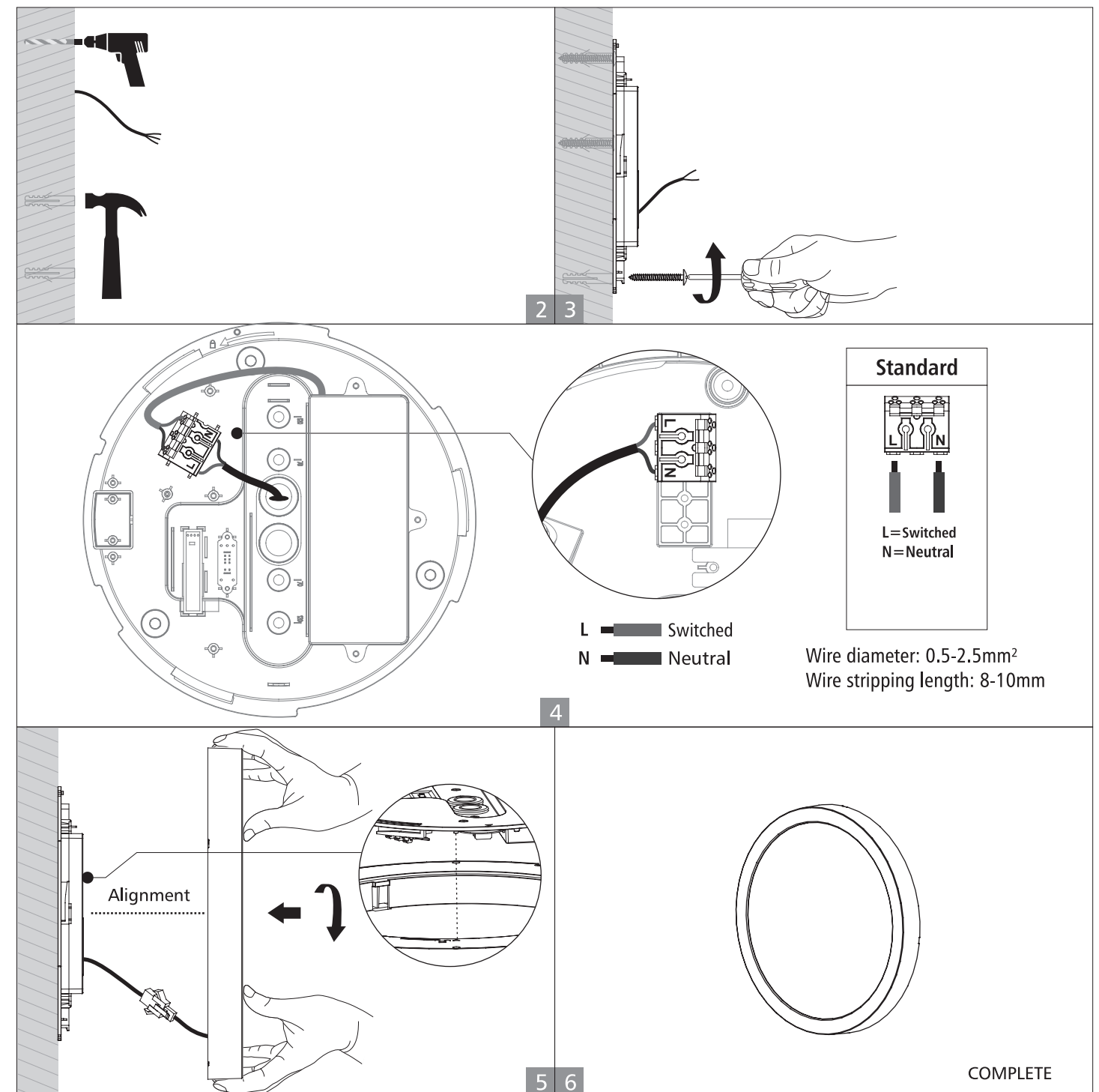
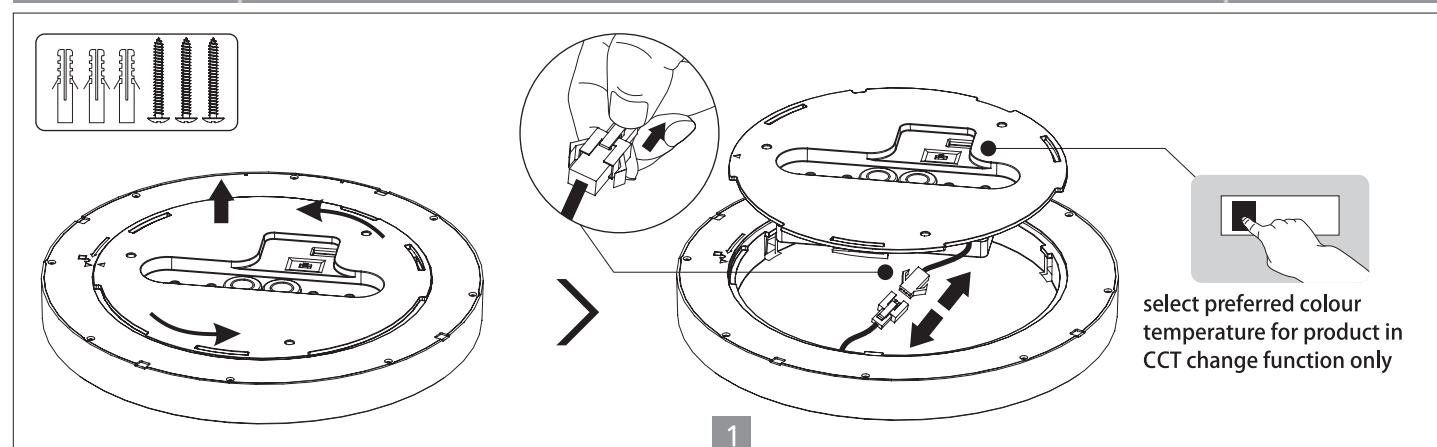


Surface mounted installation

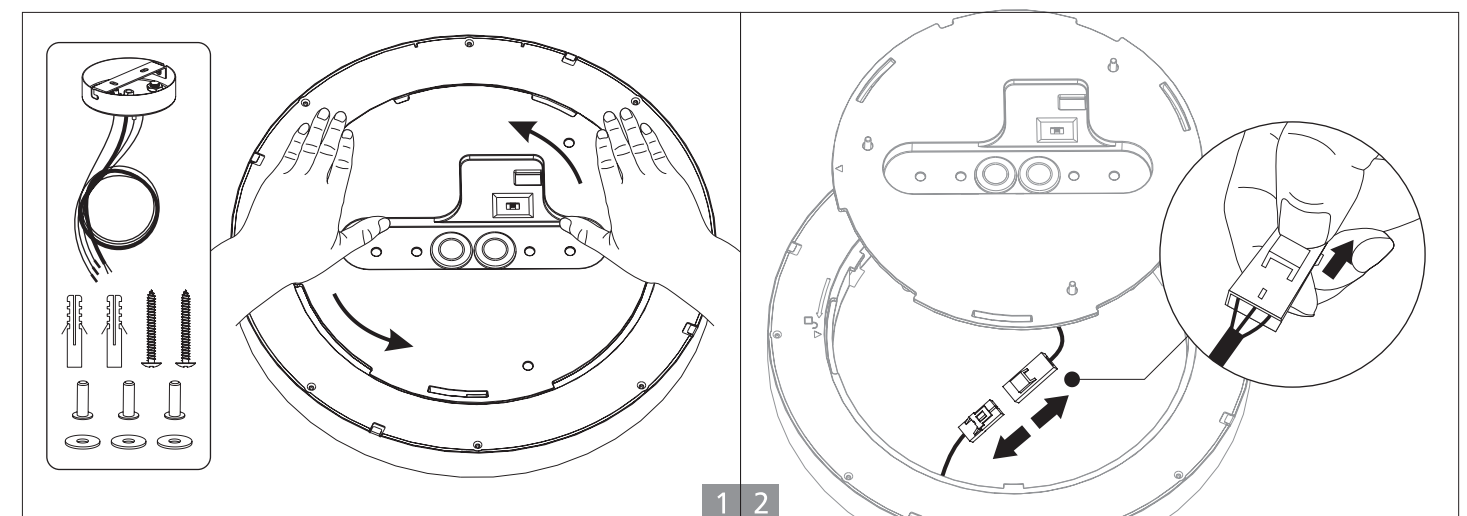


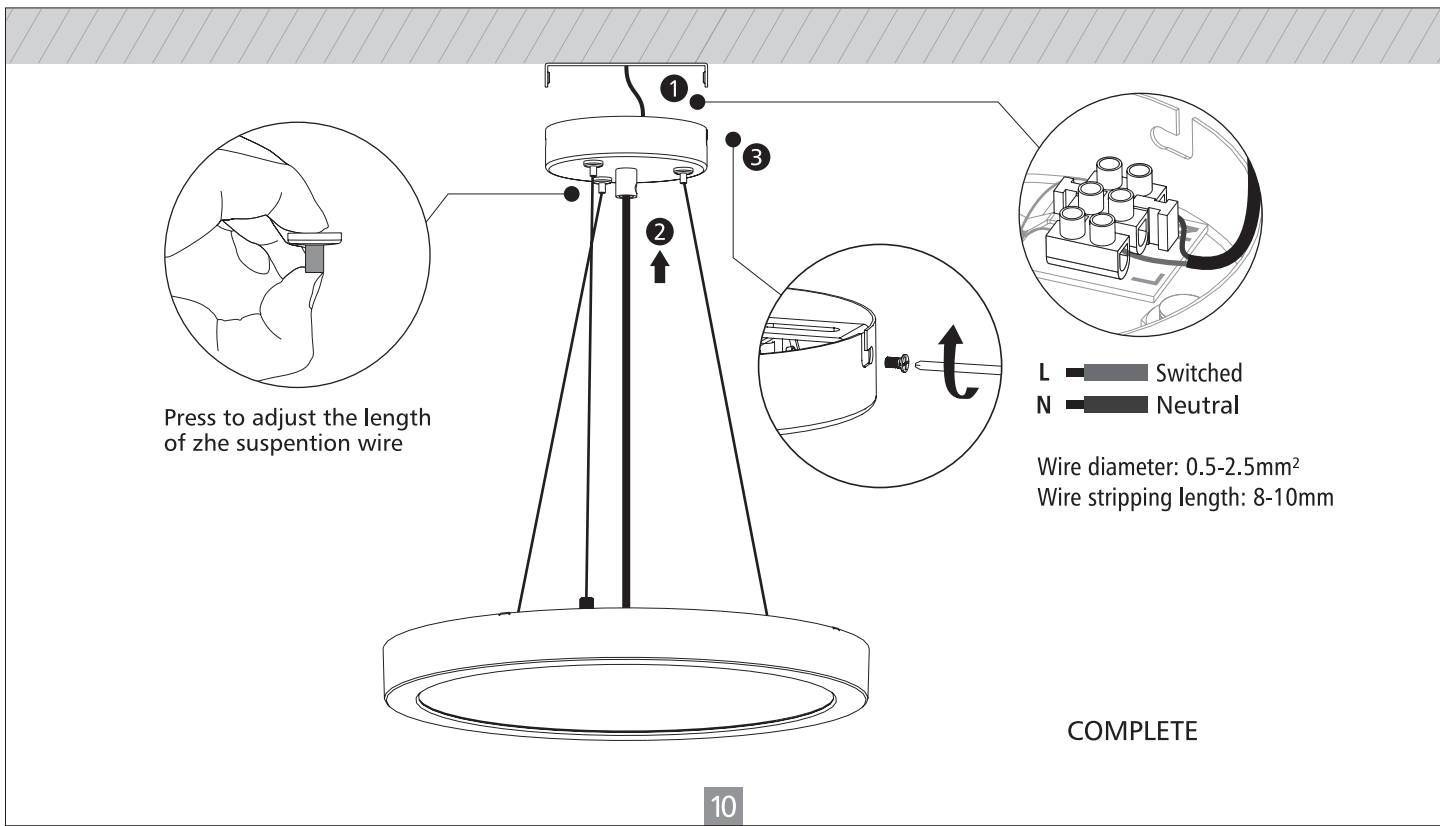
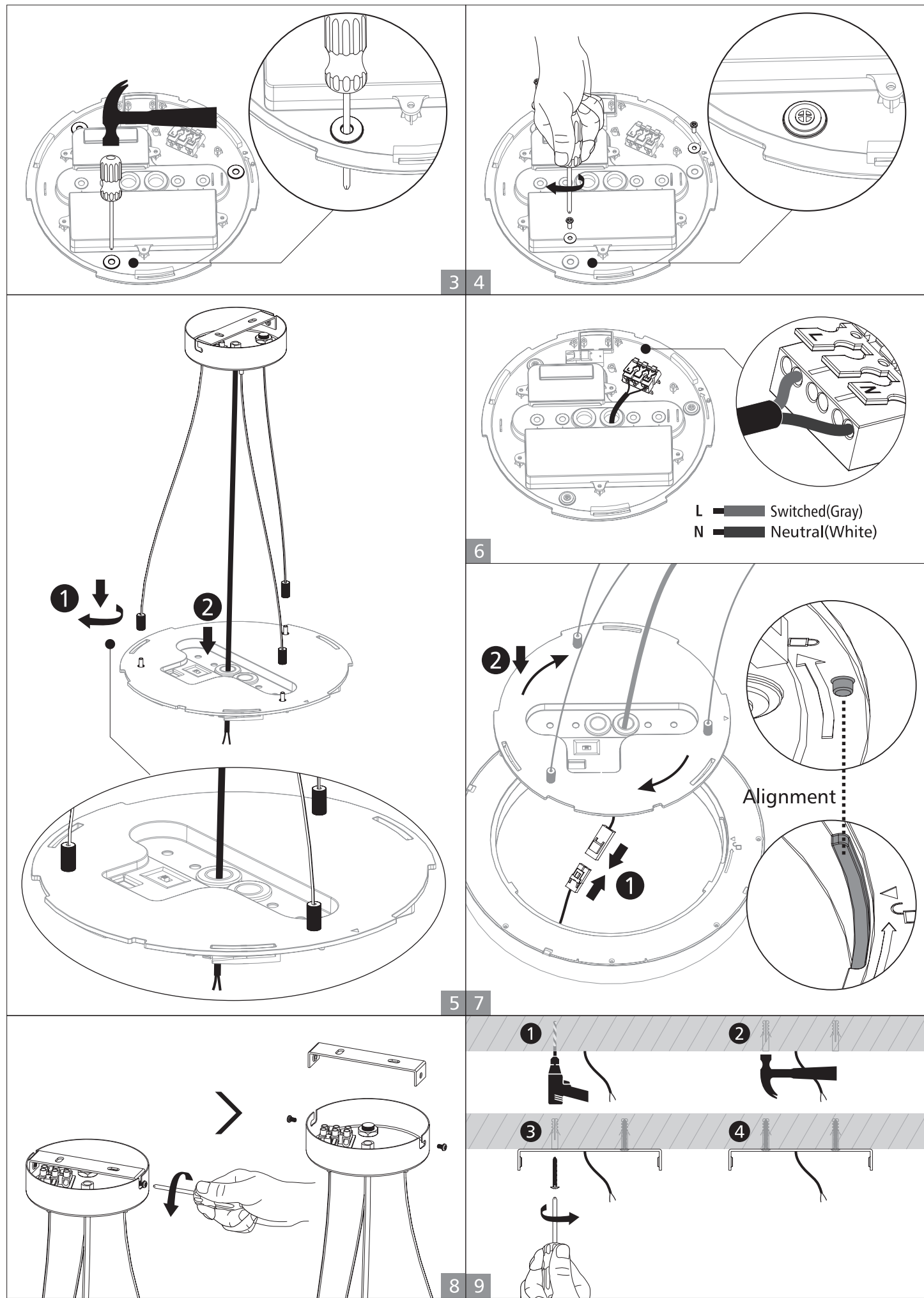


Wall mounted installation



Suspended installation (With round ceiling plate)







The Professional choice in LED lighting

