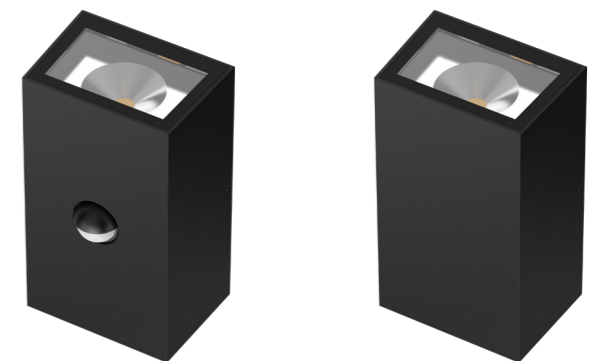


# SPECIFICATION



LED Wall Lamp

**ARA**  
**Wall Light**  
**73 Series**



Genesis One Lighting Pty LTD  
2 Lancaster Place  
Lanseria Corporate Estate  
Lanseria  
Johannesburg



## Introduction

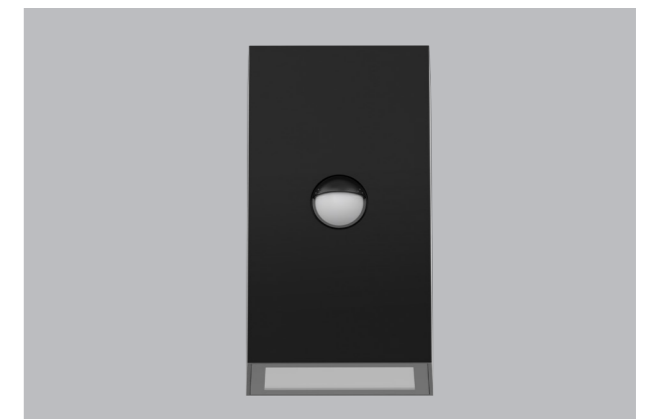
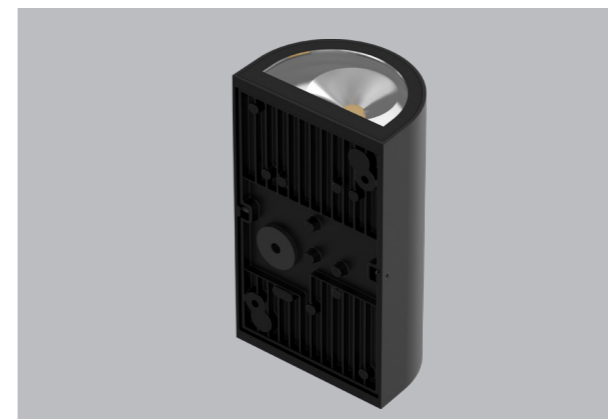
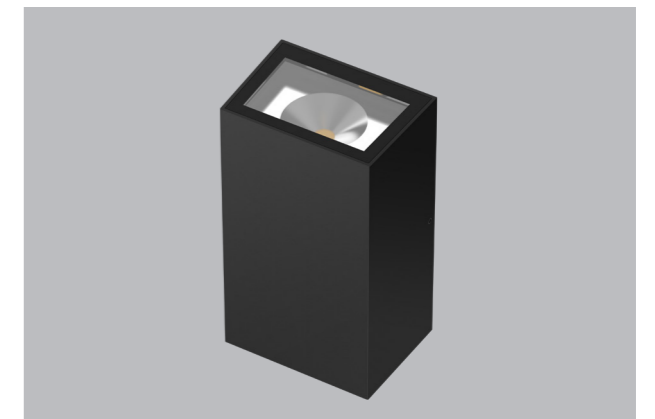
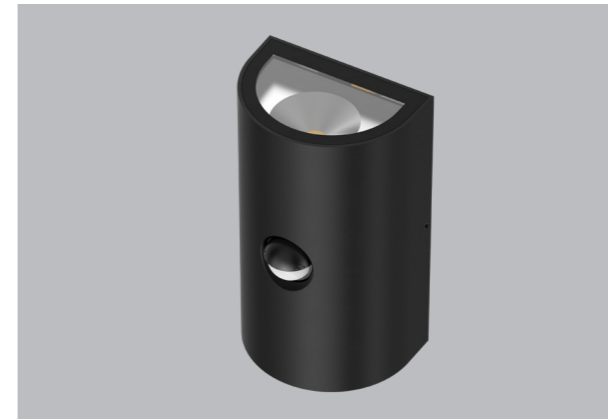
The ARA 73 wall lamp has semi-circle and square shape options. It adopts COB light source, PC reflector and high transmittance tempered glass creates a uniform light output. ADC12 aluminum lamp body provides great thermal management. IP65 waterproof for both indoor and outdoor use. The male and female paired plug-in wiring method is used inside, which is convenient for dis-assemble and assembly.

## Features

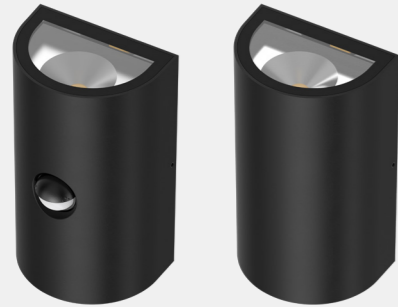
- Two shapes options: ARA Wall Light 73A is semi-circle, ARA Wall Light 73B is square.
- IP65 Waterproof.
- Adjustable PIR sensor.
- Internal flicker free driver.
- Four decorative accessories: Wall washer angle 45°/60°/90° and three separated light beam +20° 45° +20°.

## Application Areas

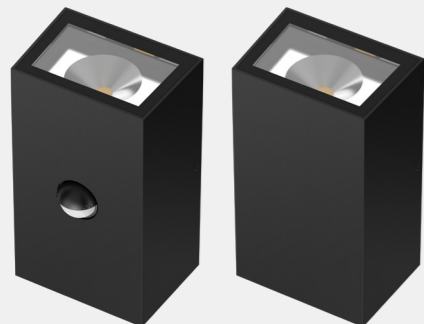
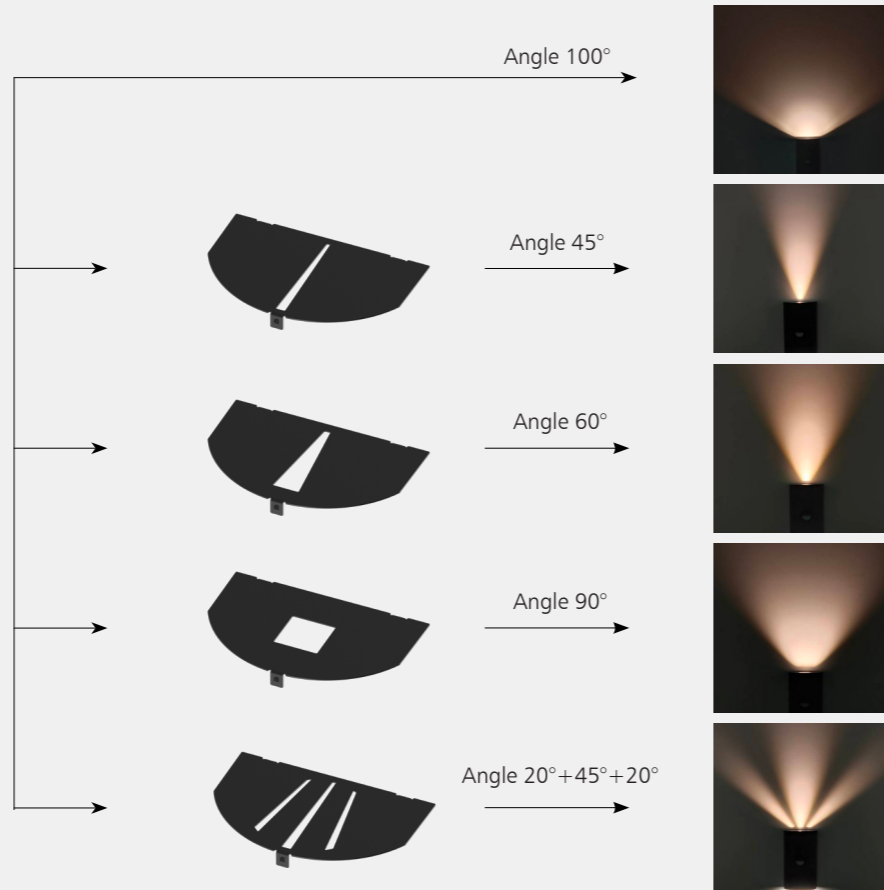
It is designed for both indoor and outdoor lighting applications. It is also widely used for public areas, such as garden, corridors, yard etc.



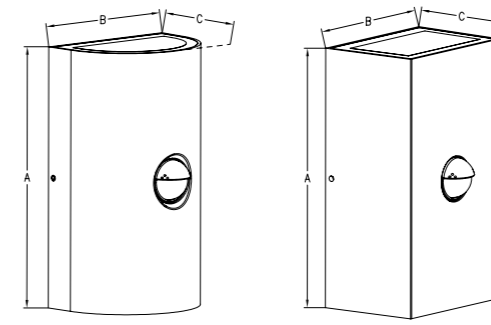
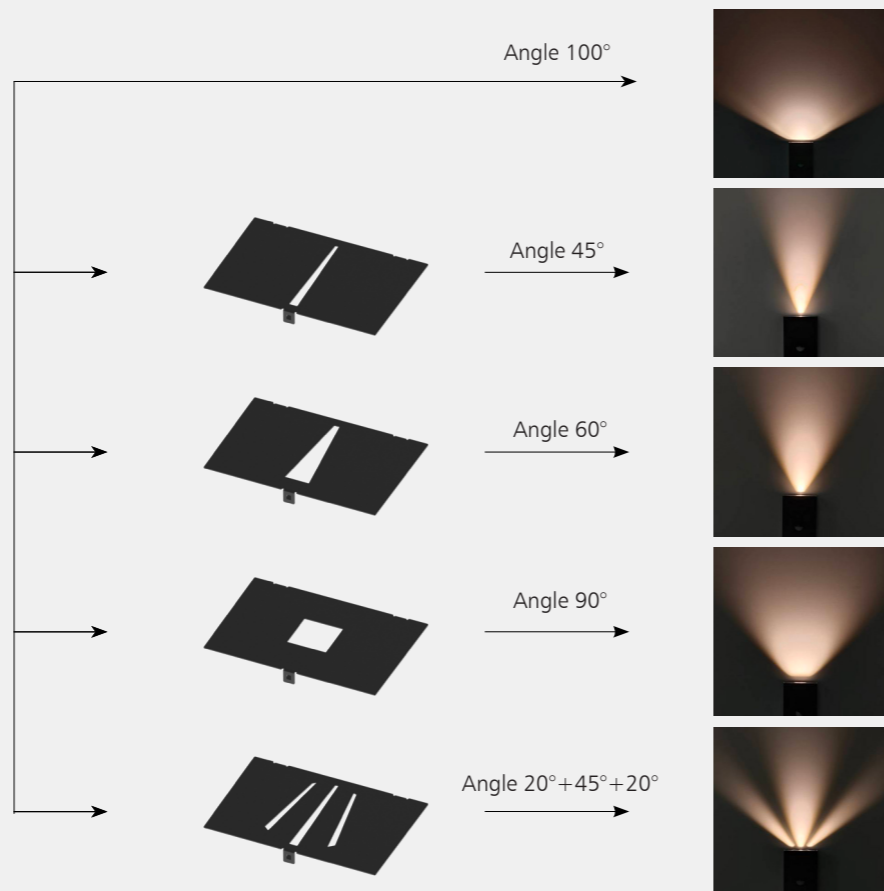
## Accessory installation



ARA WALL LIGHT 73A



ARA WALL LIGHT 73B



## Measurement

Code	Dimension(mm)			Size(mm)	Product Weight (Kg)		Package weight (Kg)		Carton Size(cm)	Qty/ CTN	20GP (pcs)	40HQ (pcs)
	A	B	C		N.W/PC	G.W/PC	N.W/CTN	G.W/CTN				
WL165N/05**073A*	165	95	67	165*95*67	0.65	0.71	7.8	9	40*31.5*21.5	12	12672	30684
WL165S/05**073A*					0.68	0.74	8.16	9.4		12	12672	30684
WL165N/08**073A*					0.67	0.73	8.04	9.3		12	12672	30684
WL165S/08**073A*					0.7	0.76	8.4	9.6		12	12672	30684
WL165N/10**073A*					0.62	0.68	7.44	8.7		12	12672	30684
WL165S/10**073A*					0.65	0.71	7.8	9		12	12672	30684
WL165N/16**073A*					0.64	0.7	7.68	8.9		12	12672	30684
WL165S/16**073A*					0.67	0.73	8.04	9.3		12	12672	30684
WL165N/05**073B*					0.77	0.83	9.24	10.5		12	12672	30684
WL165S/05**073B*					0.81	0.87	9.72	11		12	12672	30684
WL165N/08**073B*					0.79	0.85	9.48	10.7		12	12672	30684
WL165S/08**073B*					0.83	0.89	9.96	11.2		12	12672	30684
WL165N/10**073B*					0.73	0.79	8.76	10		12	12672	30684
WL165S/10**073B*					0.77	0.83	9.24	10.5		12	12672	30684
WL165N/16**073B*					0.75	0.81	9	10.2		12	12672	30684
WL165S/16**073B*					0.79	0.85	9.48	10.7		12	12672	30684

## Technical Data Sheet

Code No.		WL165N/05**073A*	WL165N/05**073B*	WL165N/08**073A*	WL165N/08**073B*	WL165N/10**073A*	WL165N/10**073B*	WL165N/16**073A*	WL165N/16**073B*
Dimension(mm)		165*95*67							
Cutout (mm)		-							
Watt(W)		4.9W		8W		2*5W		2*8W	
Rated Input Voltage(V)		AC230V							
Input Voltage(V)		AC220-240V							
LED Module Input		-							
Light Source		COB							
SDCM		<6							
CCT(K)		1-CCT: 2700/3000/4000K/5000K							
CCT Selection DIP Switch		-							
Luminous Flux (lm) ±5%	Non-DIM	1-CCT	300~450		600~750		700~1000		1250~1600
	DIM		-						
	Non-DIM	3-CCT							
	DIM		-						
CRI		>80							
Beam Angle (°)		100°							
UGR		-							
LED Driver		Built-in							
Dimming Option		NO							
Sensor		PIR+Daylight sensor							
Emergency Kits		NO							
Electrical Class		Class I							
Ingress Protection (IP Rating)		IP65							
Impact Resistance (IK Rating)		IK06							
Product Finishing(Base)		Black RAL9005/White RAL 9016/Grey RAL7016							
Materials of Optics		PC							
Materials of Housing		Aluminum Die-casting							
Lifetime (hr)		50000hr							
Glow wire test (°C )		750°C							
Operating Temp. (°C )		-20°C ~40°C							
Storage Temp. (°C )		-20°C ~65°C							
Installation		Wall mount							

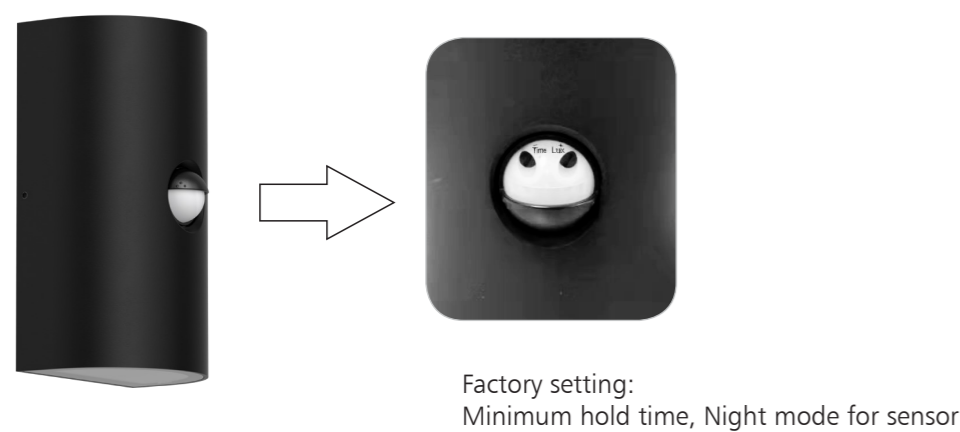
Driver Datasheet (Non-dimmable)

Total load wattage		4.9W	8W	2*5W	2*8W
Output	Output Voltage range	DC27-40V	DC:30-40V		
	Rated output current	100mA	200mA	250mA	420mA
	Line Regulation	±5%			
	Setup, Rise Time	<0.5s @230V			
	Flickering Index	3% (NO RISK)	NO RISK		
Input	Input Voltage	AC220-240V			
	Rated Input Voltage(V)	AC230V			
	Frequency	50/60Hz			
	Input Current	≤0.06A	≤0.05A	≤0.06A	≤0.09A
	Rated Input Current	≤0.05A	≤0.04A	≤0.05A	≤0.08A
	Power Factor	≥0.4	≥0.8	≥0.9	
	THD	-	<20% @230V		
	Efficiency	≥70%	≥82%		
	No load wattage	<0.8W @230V	<0.9W @230V		
Protection	Short circuit protection	Pass			
	Over voltage protection	Pass			
	Over temperature protection	Pass			
Safety &EMC	Withstand voltage	I/P-FG:1.5KVac,<5mA 60S			
	Isolation Resistance	500VDC, ≥100M Ω			
	Surge	IEC/EN61000-4-5( P<25W; L-N:500V, L/N-PE:1KV)			
	EMC Emission	EN55015, EN61000-3-2			
	EMC Immunity	EN61000-4-2,3,4,5,6,8,11; EN61547			

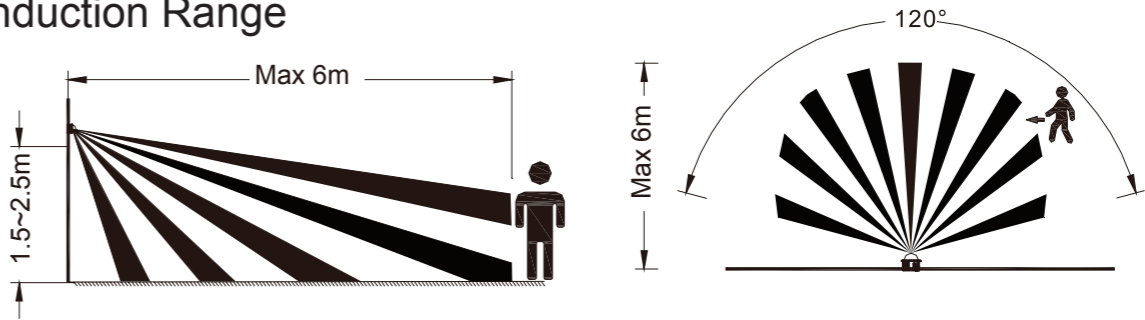
Datasheet (Sensor)

Sensor datasheet	
Operating voltage	AC220-240V
Sensor	PIR+Daylight sensor
Lux range	0~1000LX
Installation Height	1.5m-2.5m
Detection range	120°
Detection Distance	2-6m (25℃ ) (adjustable)
Time delay	min: 5±3sec    max: 12±2min
Operating Temperature	(-20~60℃ )

PIR sensor

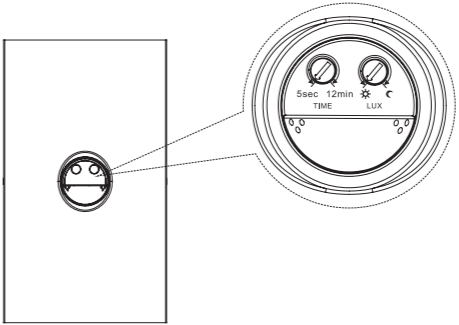


Induction Range



Function

1.Time adjustable: The TIME adjustment controls how long the light will stay on after the motion has been detected. Turn the TIME control knob clockwise to increase (up to about 12 minutes) how long the lights stay on or anti-clockwise to decrease (down to about 5 seconds) the time delay



- 2.Lux adjustment: The lux adjustment controls sensor mode under different setting. Turn the Lux control knob clockwise to ☀, it is daytime mode, the lamp can induct properly at both daytime and night. Turn the Lux control knob anti-clockwise to ☾, it is night mode, the lamp can induct properly only at night.
- 3.Please adjust the control knob according to the picture 1, if rotate too hard with 360 degree, the knob will be broken or cannot be adjusted normally.
- 4.Manual mode: When there has no need for induction setting, start manual mode, the lamp will operate without induction function for a long time, once there has induction demand, the lamp should be operated by hand and start automatic mode. Manual mode function as below:
- 4.1 Only the lamp can be operated properly can manual mode be started.
- 4.2 Enter into manual mode: Turn off the lamp twice (OFF-ON-OFF-ON) within 0.5S~2S when the lamp operate properly, then the lamp will be opereted without induction function for 5hours, after 5 hours, the lamp will change into induction mode automaticlly. If the lamp turns off automatically in 1~2 minutes, then it means failed enter, need try again.
- 4.4 Exit manual mode: Turn off lamp twice (OFF-ON-OFF-ON) within 0.5S~2S when the lamp operate properly, then the lamp will be operated with induction function.

Test

- Connect the power and the lamp, adjust Time control knob into 5 second position, adjust Lux control knob into daytime mode.
- Turn on the power, the lamp will turn off automatically after 35 sec warm-up.
- Within the induction area, if the sensor induct people movement, the lamp will turn on, if people keep motionless, the lamp will turn off automatically, if move again, then the lamp will also trun on again.(To keep a steady working status, the lamp will not working within 3 seconds after turn off, please wait 3 seconds for testing after the lamp turns off)
- Adjust Time and Lux control knob into needed position, then start working.

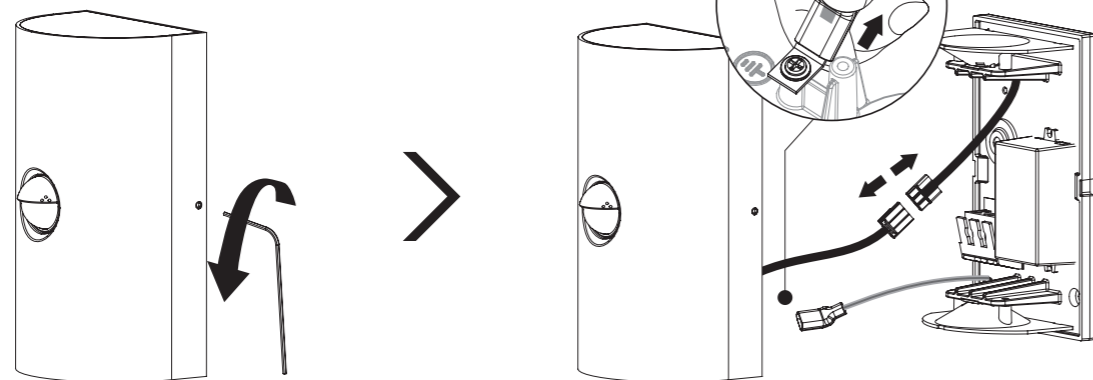
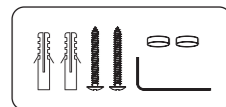
Installation Procedure

WARNING ⚡

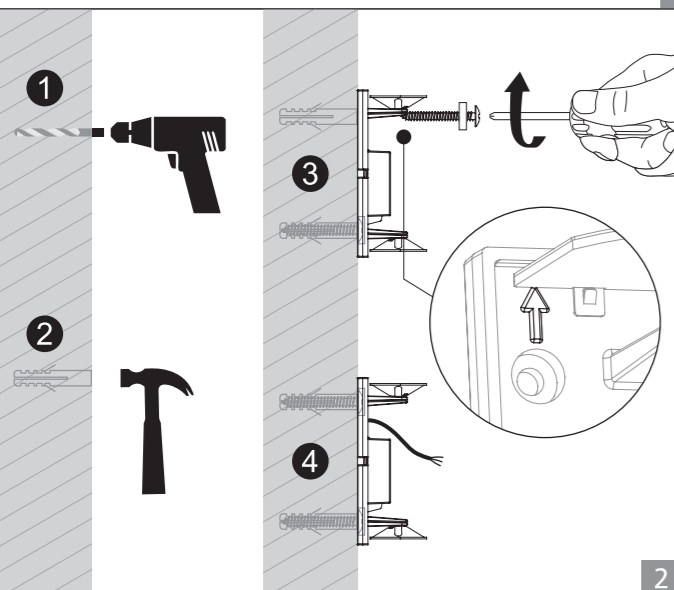
- 1.Switch off power supply before installation / maintenance.
- 2.Switch on only after complete installation and examination of the circuit.
- 3.Professional electrician for installation and maintenance only.



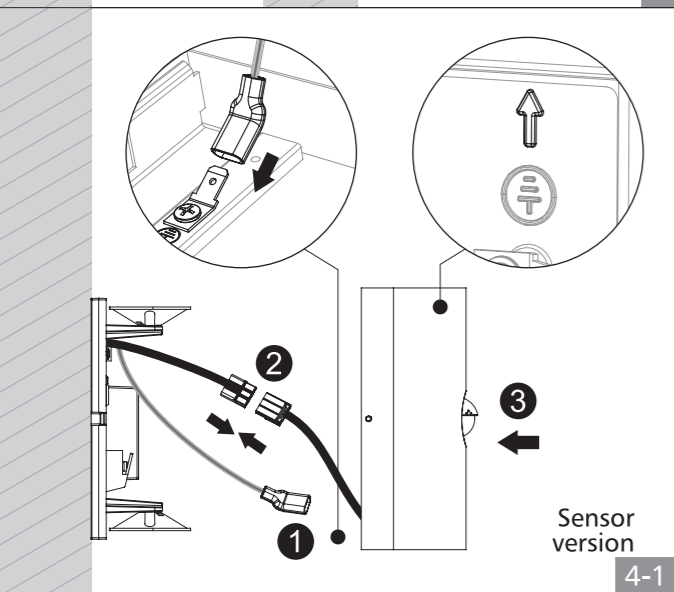
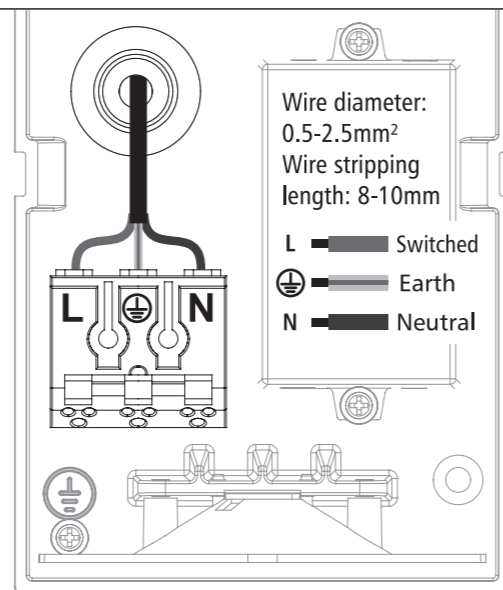
## Wall mounted installation



1

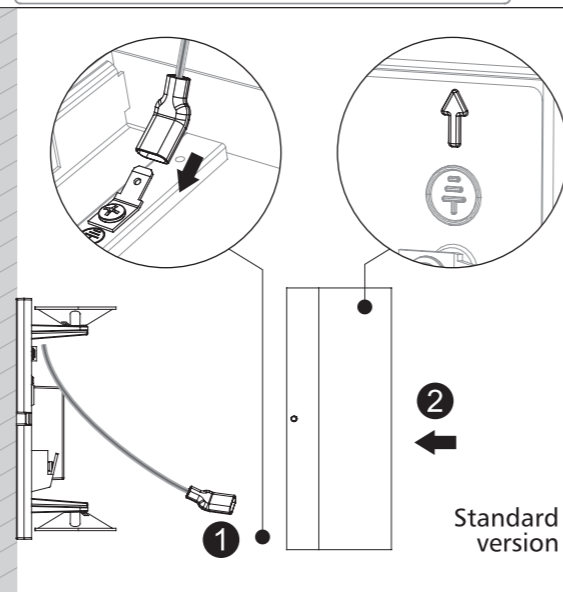


2 3

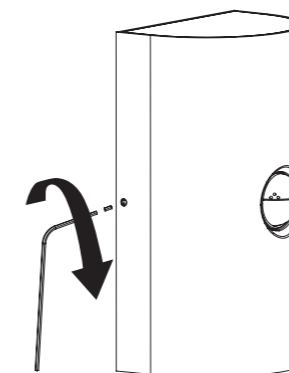


Sensor  
version

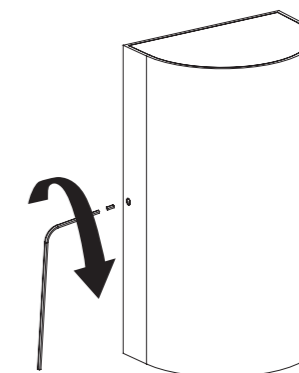
4-1 4-2



Standard  
version



5-1 5-2

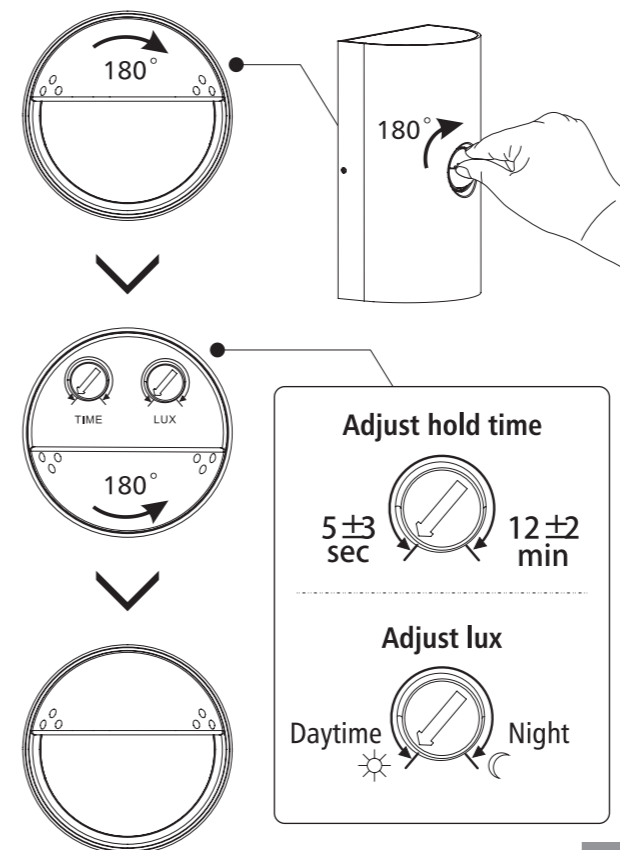


COMPLETE

COMPLETE

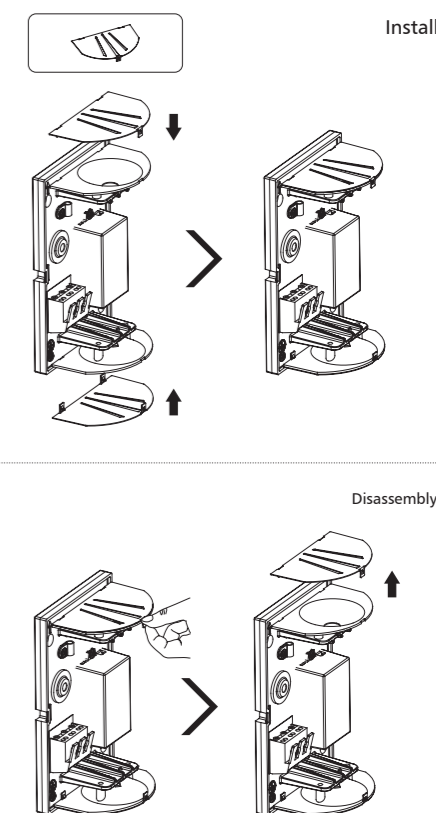
6-1 6-2

### Adjust hold time and lux



7-1

### Accessory installation





*The Professional Choice in LED Lighting*

[www.genesisone.co.za](http://www.genesisone.co.za) [sales@genesisone.co.za](mailto:sales@genesisone.co.za) TEL: +27 (0)11 4620251

Add: 2 Lancaster Place, Electron Lane, Lanseria Corporate Estate, Lanseria 1748 Johannesburg, South Africa