



LED Downlight

Estrella 280
Series



Introduction

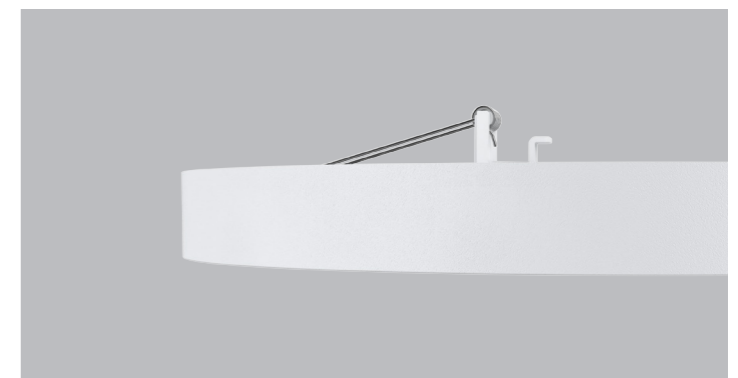
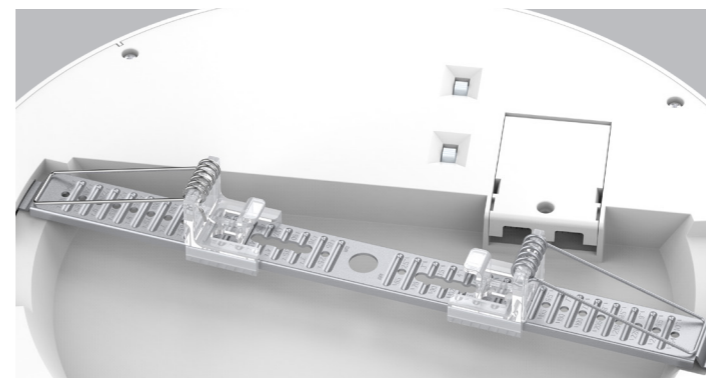
This downlight is equipped with an adjustable cutout size. It utilizes high-lumen SMD LEDs and features an edge lighting design for even light distribution. The AL1060 aluminum profile ensures excellent thermal dissipation. Its super-slim design includes an internal driver and quick connector, making it very easy to wire and install. It can be widely used in various applications, offering optional recessed and surface-mounted installation.

Features

- The cutout size is adjustable, ranging from 65 to 205mm, and for recessed installation, it extends from 120 to 260mm, providing more options for replacement tasks.
- Featuring a super-slim design with an internal driver and quick connector.
- Offers interchangeable CCT (3000K, 4000K, 5700K) with a slide switch.
- Provides interchangeable power options (10W, 13W, 16W) or (16W, 20W, 22W) with a slide switch.
- Compatible with Triac dimming.
- Supports both recessed and surface-mounted installation.

Application Areas

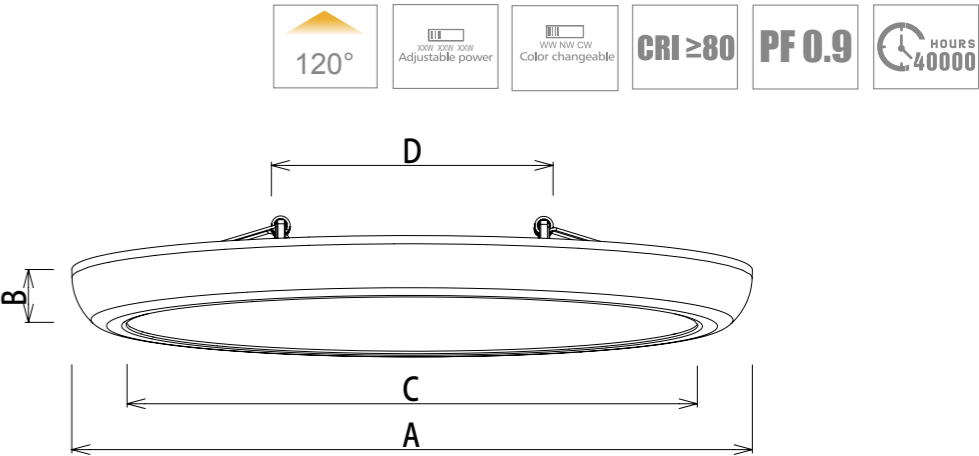
It is designed for general lighting applications in office, supermarket, shop, school, hotel, etc. It is also widely used for public areas, such as stairway, lobby, reception, corridors etc





Technical Data Sheet

Code No.			IDL235N/16**280				IDL300N/22**280			
Dimension(mm)			Ø235*22mm				Ø300*25mm			
Cutout (mm)			Ø65mm-Ø205mm				Ø120mm-Ø260mm			
Watt(W)			16W				22W			
Rated Input Voltage(V)			Non-Dim:AC100-240V / Dim:AC230V							
Input Voltage(V)			Non-Dim:AC100-240V / Dim:AC200-240V							
LED Module Input			-							
Light Source			SMD							
SDCM			<6							
CCT(K)			1-CCT: 3000K/4000K/5000K/5700K 3-CCT: 3000K + 4000K + 5700K							
CCT Selection DIP Switch			YES							
Luminous Flux (lm) ±5%	Non-DIM	1-CCT	1400-1600				2200-2500			
	DIM		1400-1600				2200-2500			
	Non-DIM	3-CCT	1400-1700				2200-2600			
	DIM		1400-1700				2200-2600			
	A3	1-CCT	10W:950-1100	13W:1100-1450	16W:1450-1600	16W:1600-1800	20W:1900-2200	22W: 2200-2500		
		3-CCT	10W:950-1000	13W:1200-1450	16W:1400-1700	16W:1500-1800	20W:1900-2200	22W: 2200-2600		
CRI			≥80							
Beam Angle (°)			120°							
UGR			-							
LED Driver			Built-in							
Dimming Option			Triac							
Sensor			-							
Emergency Kits			-							
Electrical Class			Class II							
Ingress Protection (IP Rating)			IP20							
Impact Resistance (IK Rating)			IK06							
Product Finishing(Base)			White RAL 9016							
Materials of Optics			PS							
Materials of Housing			PC/Aluminum							
Lifetime (hr)			40,000h							
Glow wire test (°C)			650°C							
Operating Temp. (°C)			-20°C ~40°C							
Storage Temp. (°C)			-20°C ~50°C							
Installation			Surface mount / Recessed							



Measurement

Code	Dimension(mm)				Size(mm)	Product Weight (Kg)		Package weight (Kg)		Carton Size(cm)	Qty/CTN	20GP (pcs)	40HQ (pcs)
	A	B	C	D		N.W/PC	G.W/PC	N.W/CTN	G.W/CTN				
8 "	235	22	187	65-205	Ø235*22	0.46	0.62	9.2	13.4	40.5*26*57	20	9920	22320
10 "	300	25	252	120-260	Ø300*25	0.78	0.95	7.8	10.5	44.5*33*36.5	10	5270	12600

Driver Datasheet (Non-dimmable)

Total load wattage		16W		22W	
Output	Output Voltage range	DC72-82V		DC66-76V	
	Rated output current	190mA		280mA	
	Line Regulation	±5%			
	Setup, Rise Time	≤0.5S			
	Flickering Index	3%(NO RISK)			
Input	Input Voltage	AC85-265V			
	Rated Input Voltage(V)	AC100-240V			
	Frequency	50/60Hz			
	Input Current	≤0.21A		≤0.29A	
	Rated Input Current	≤0.18A		≤0.25A	
	Power Factor	0.9			
	THD	-			
	Efficiency	≥85%			
	No load wattage	≤0.5W			
Protection	Short circuit protection	Pass			
	Over voltage protection	Pass			
	Over temperature protection	Pass			
Safety &EMC	Withstand voltage	-			
	Isolation Resistance	I/P-O/P: 500VDC, ≥100M Ω			
	Surge	IEC/EN61000-4-5(P<25W; L-N:500V, L/N-PG:1KV);			
	EMC Emission	EN55015, EN61000-3-2			
	EMC Immunity	EN61000-4-2,3,4,5,6,8,11; EN61547			

Driver Datasheet (Triac Dimmable)

Total load wattage		16W	22W
Output	Output Voltage range	DC70-80V	
	Rated output current	180mA	260mA
	Line Regulation	± 5%	
	Setup, Rise Time	<0.5S	
	Flickering Index	5.5%(LOW RISK)	
Input	Input Voltage	AC200-240V	
	Rated Input Voltage(V)	AC230V	
	Frequency	50Hz	
	Input Current	<0.09A	<0.13A
	Rated Input Current	0.08A	<0.11A
	Power Factor	0.9	
	THD	-	
	Efficiency	≥85%	
Protection	No load wattage	<1W	
	Short circuit protection	Constant current limiting, recovers automatically after fault condition is removed	
	Over voltage protection	Shut down o/p voltage	
	Over temperature protection	Shut down o/p voltage, recovers automatically after temperature goes down	
Safety &EMC	Withstand voltage	-	
	Isolation Resistance	I/P-O/P: 500VDC, ≥100M Ω	
	Surge	IEC/EN61000-4-5(P<25W; L-N:500V, L/N-PG:1KV);	
	EMC Emission	EN55015, EN61000-3-2	
		EN61000-4-2,3,4,5,6,8,11; EN61547	

Driver Datasheet(A3)

Total load wattage		10W	13W	16W	16W	20W	22W
Output	Output Voltage range	16W			22W		
	Rated output current	DC70-80V			DC66-76V		
	Line Regulation	125mA/150mA/190mA			210mA/260mA/280mA		
	Setup, Rise Time	≤0.5S					
	Flickering Index	3%(NO RISK)					
Input	Input Voltage	AC85-265V					
	Rated Input Voltage(V)	AC100-240V					
	Frequency	50Hz/60Hz					
	Input Current	<0.13A	<0.17A	<0.21A	<0.21A	<0.27A	≤0.29A
	Rated Input Current	0.12A	0.15A	0.18A	0.18A	0.23A	≤0.25A
	Power Factor	0.9					
	THD	-					
	Efficiency	≥85%					
	No load wattage	<0.5W					
Protection	Short circuit protection	Pass					
	Over voltage protection	Pass					
	Over temperature protection	Pass					
Safety &EMC	Withstand voltage	-					
	Isolation Resistance	-					
	Surge	IEC61000-4-5(L-N:0.5KV,)					
	EMC Emission	EN55015, EN61000-3-2					
	EMC Immunity	EN61000-4-2,3,4,5,6,8,11; EN61547					

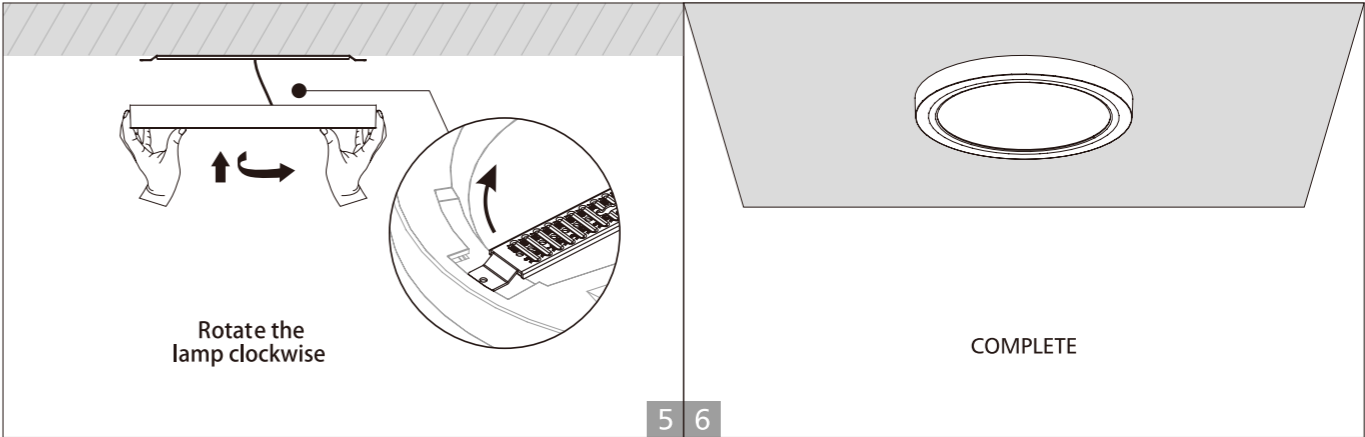
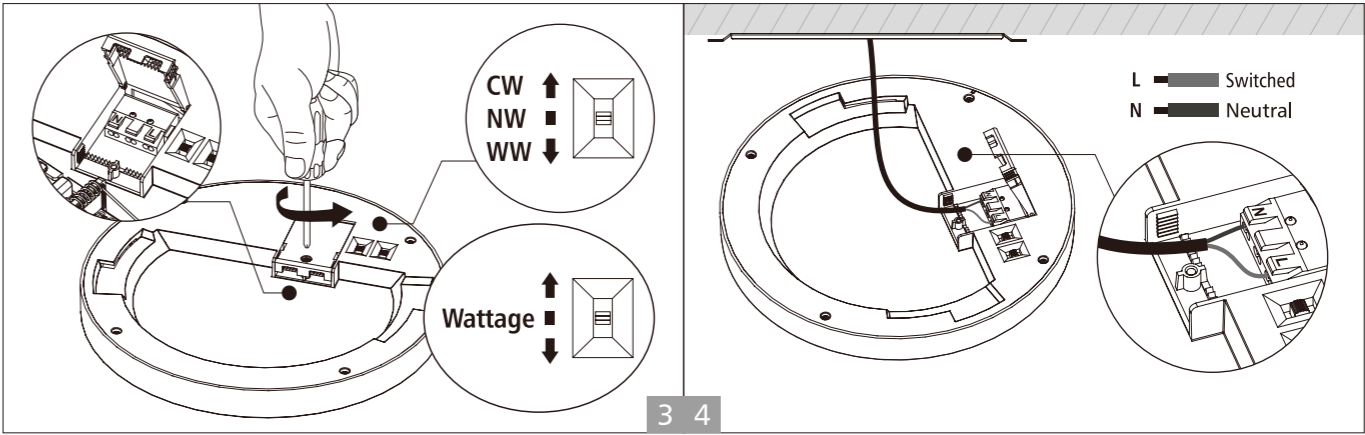
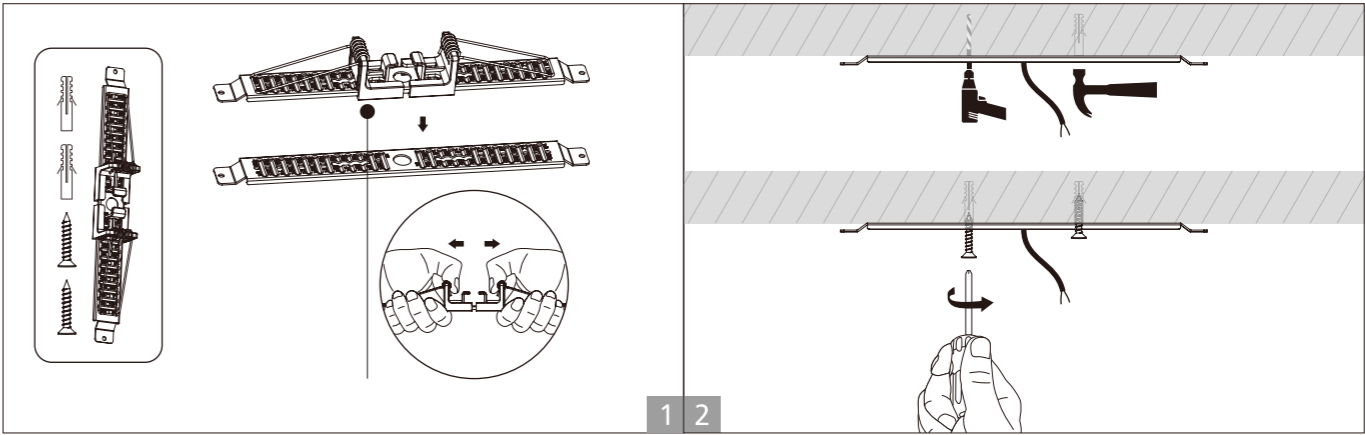
Installation Procedure

WARNING⚡

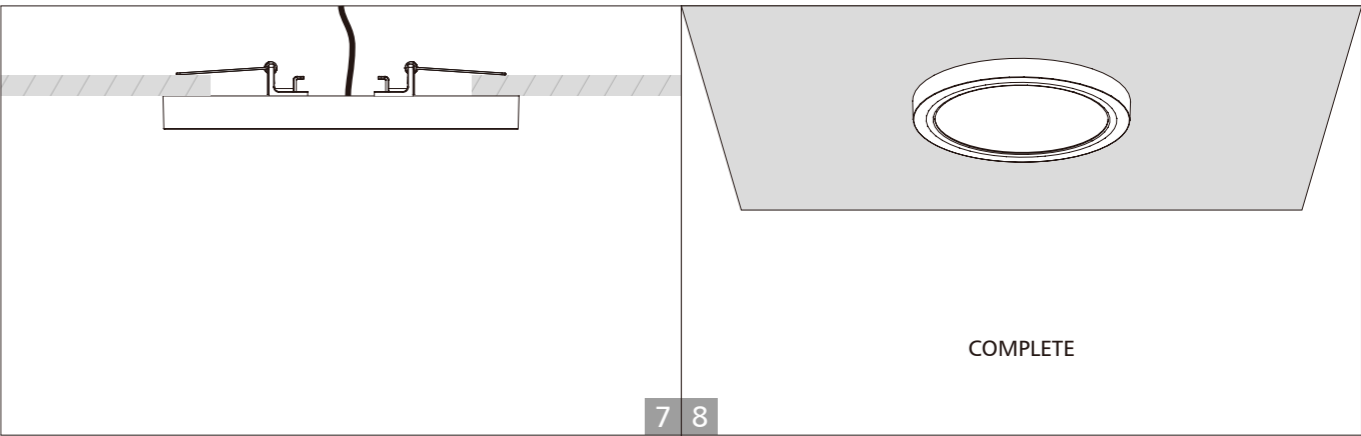
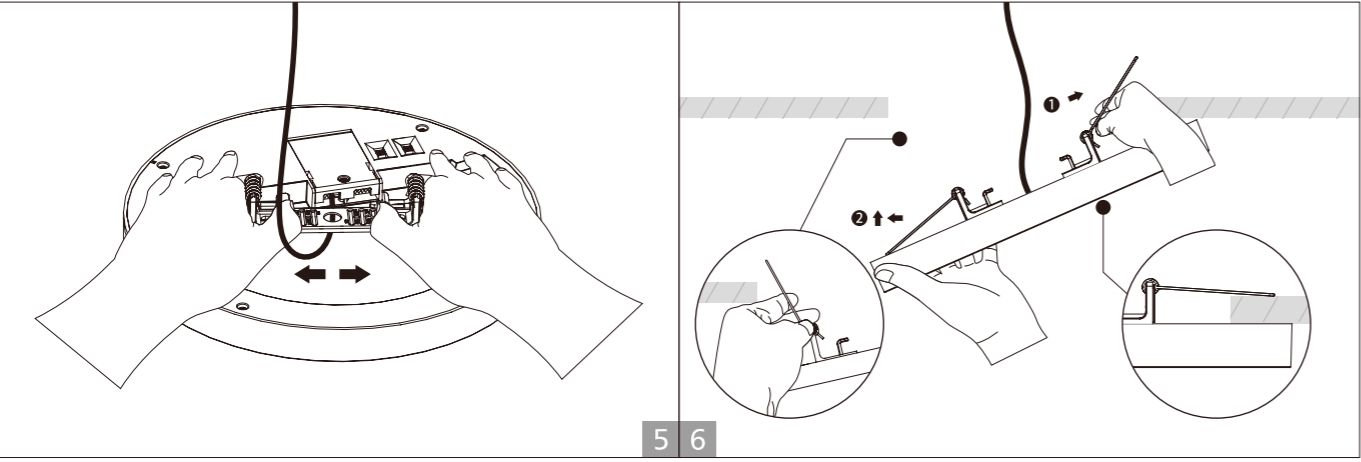
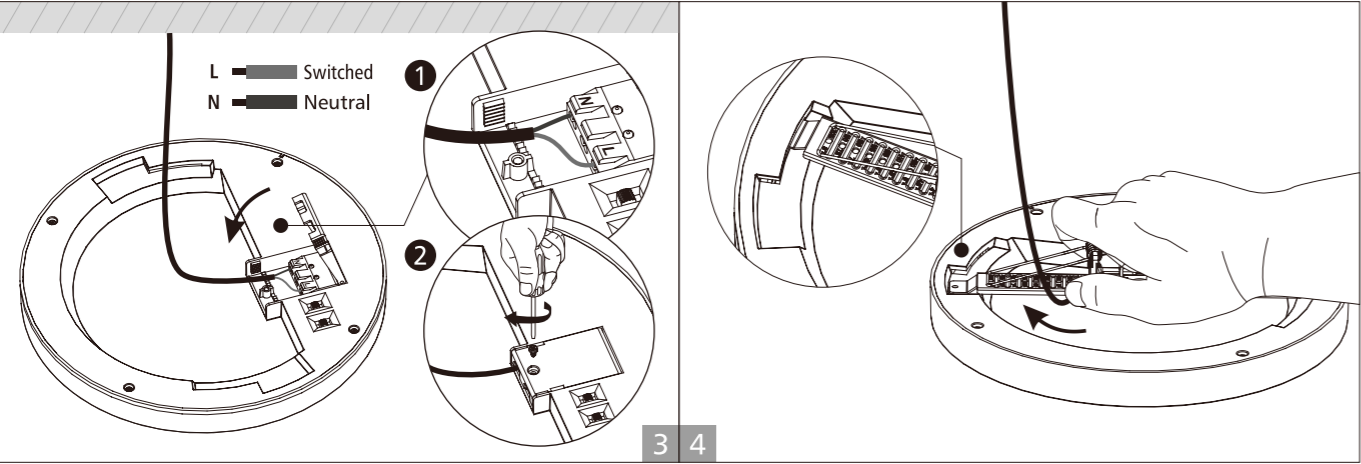
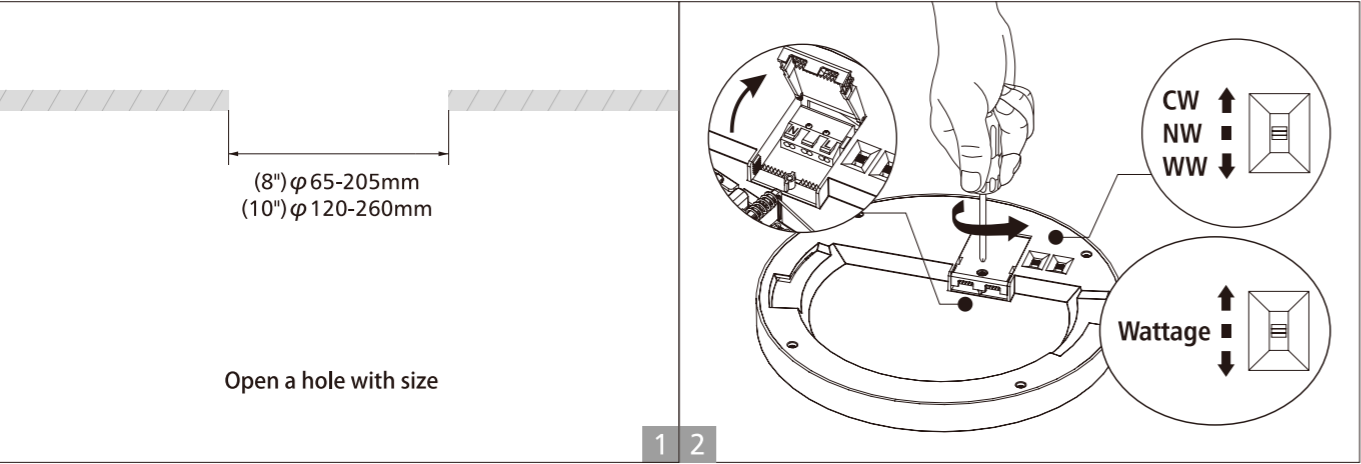
- 1.Switch off power supply before installation / maintenance.
2.Switch on only after complete installation and examination of the circuit.
3.Professional electrician for installation and maintenance only.



Surface mounted installation



■ Recessed into ceiling





The Professional Choice in LED Lighting

Unit43, Northlands Retail Park,
210 Epsom ave, Hoogland, Randburg
www.genesisone.co.za