

Track Light Series

Track lighting has undergone many changes in recent years. The trend in track lighting has been toward smaller fixtures, which are much less noticeable in the space. Track lighting is excellent for its flexibility and can provide ambient, task or accent lighting. You can move, swivel, rotate and aim the individual fixtures in any direction along the track, giving you the versatility to change the lighting scheme when the need arises. With special attachments, you also can hang chandeliers and pendants from the track.

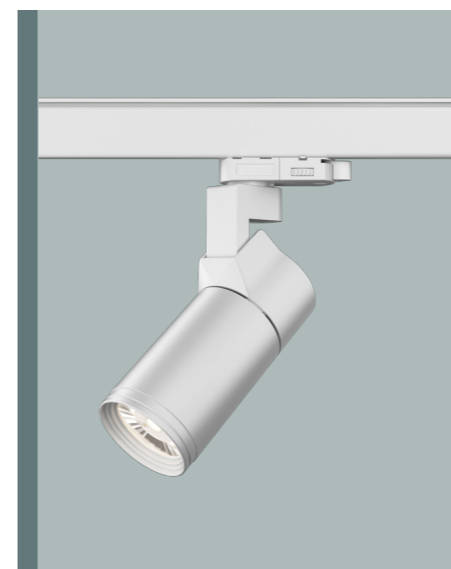
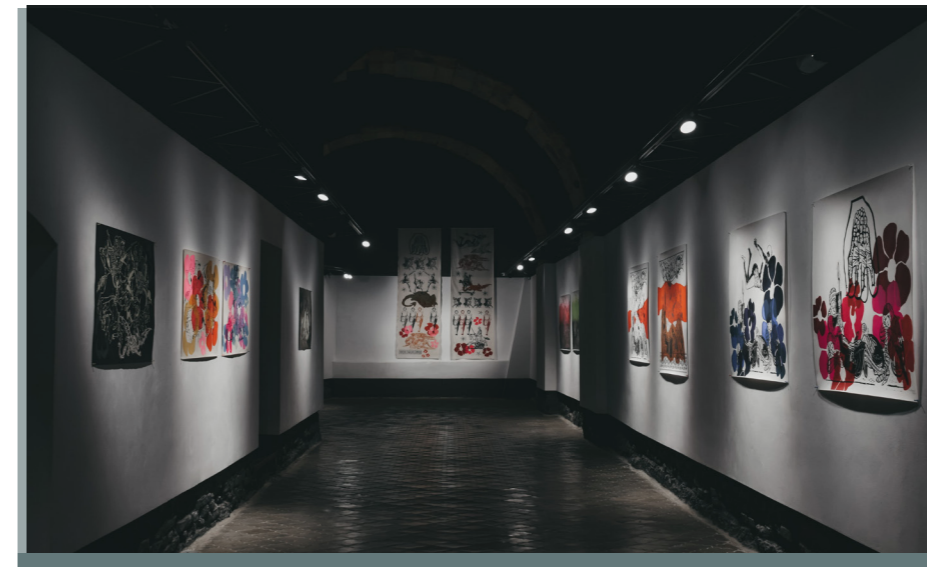


Applications
 Art Galleries
 Retail stores
 Food outlets
 Fashion stores
 Residential

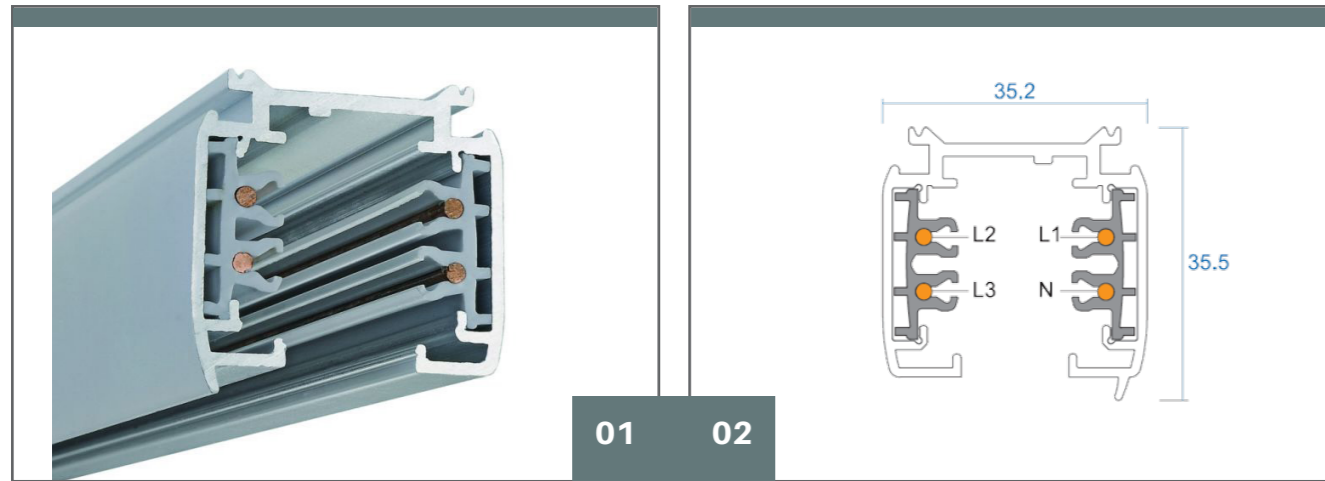
Track lighting provides highly customisable and adaptable lighting solutions to suit a variety of commercial and residential uses. Track can be arranged in any configuration or size you need, whether you require linear runs, T shaped, U shaped, I shaped, S shaped, squares, circular or rectangular. It can be fitted on beams, on an angled or sloped ceiling where pendants may not be suitable, or on a vaulted ceiling to bring the light level down. Displaying artwork at its best is fundamental to the success of art galleries, and the right lighting is essential.

A customised track solution will ensure that artwork is cleanly illuminated, with no awkward shadows, that colours are accurately represented and that the gallery has the right ambience. Track lighting is adaptable and flexible, and can be changed for each new exhibition. Lighting is an integral part of a customer's shopping experience, and the right lighting can positively impact sales. A custom track solution can use accent lighting to highlight certain featured products or displays, with ambient lighting creating the desired ambience.

Track Systems and Light Series



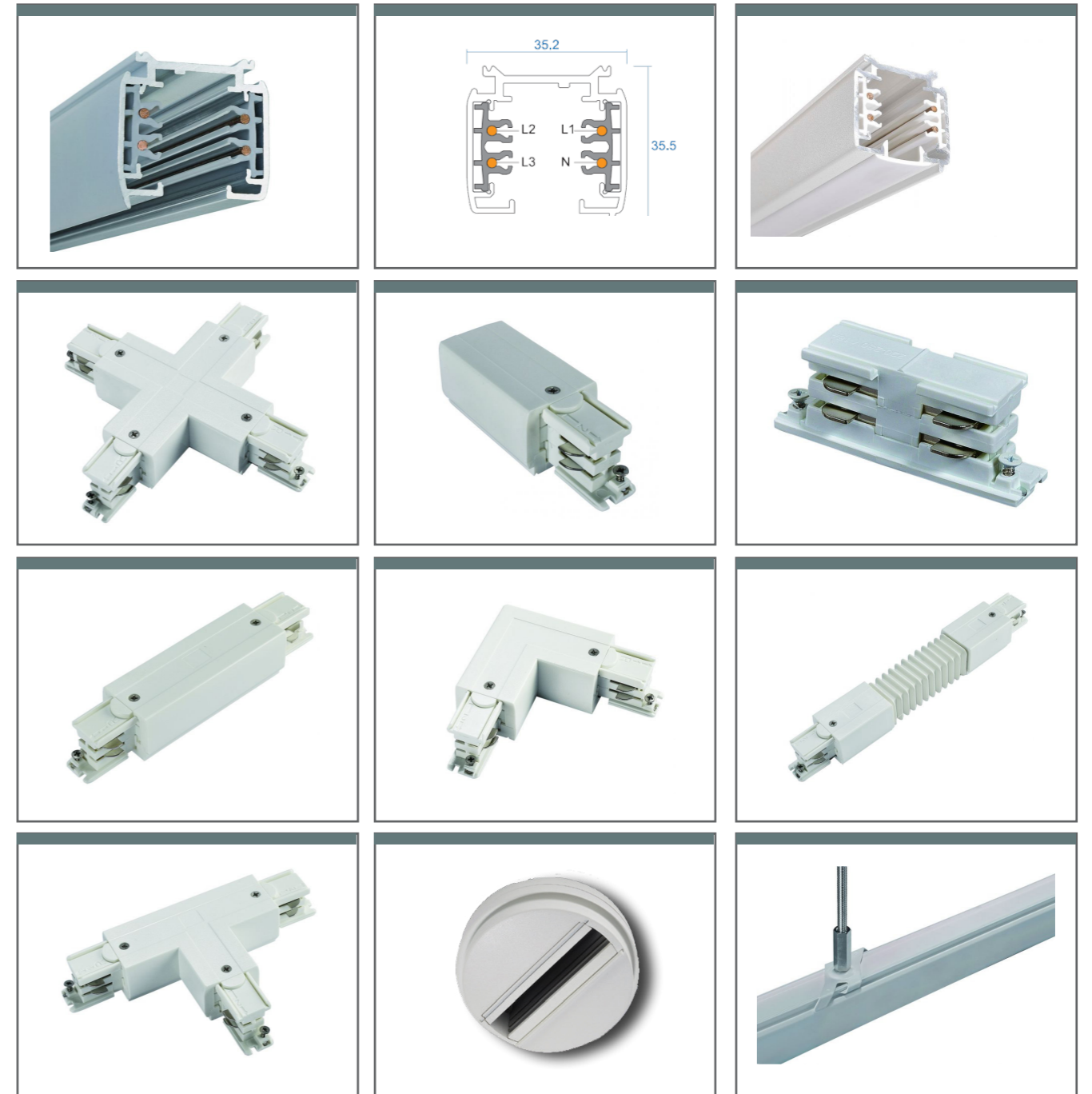
Track 3 Circuit Surface / Suspended



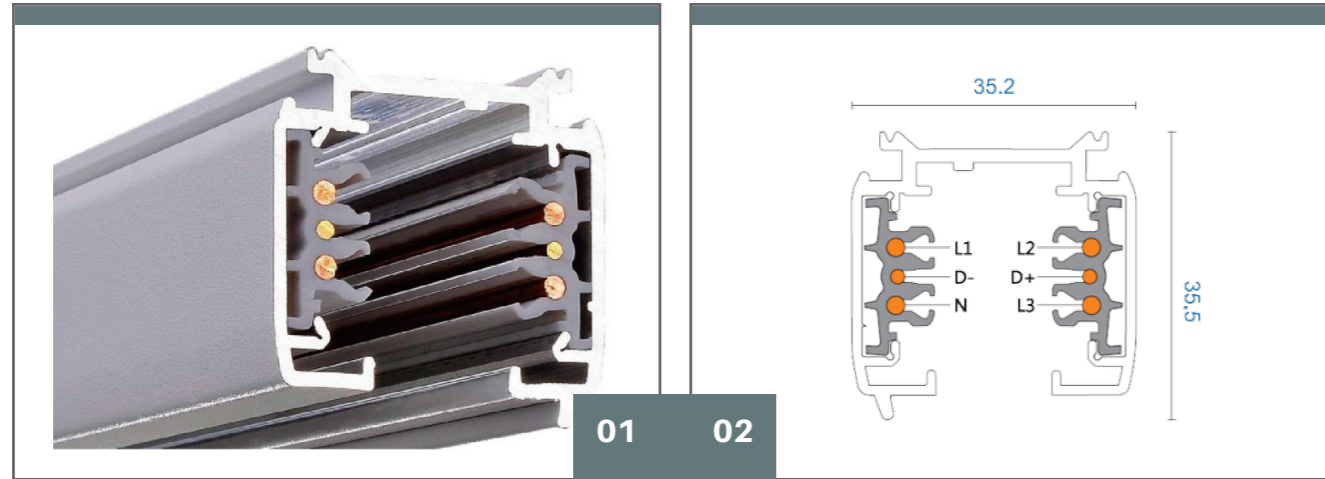
High quality 3-circuit track system for the professional lighting market
 Suitable for track lights with 3-phase adapters of all major brands
 A comprehensive range of innovative accessories, like the twisted L and T connectors
 Maximum freedom to create the ultimate track plan
 Quick and easy to install
 No need to adjust the wires after cutting the track
 Available in white, black and grey

CODE	LENGTH (MM)	DESCRIPTION
T3SN/3535+m1	1,000 * 35 * 35	1,000mm Surface mounted 3-phase track
T3SN/3535+m2	2,000 * 35 * 35	2,000mm Surface mounted 3-phase track
T3SN/3535+m3	3,000 * 35 * 35	3,000mm Surface mounted 3-phase track
T3SN/3535+m4	4,000 * 35 * 35	4,000mm Surface mounted 3-phase track

Track 3 Circuit Surface / Suspended



Track 3 Circuit DALI Surface



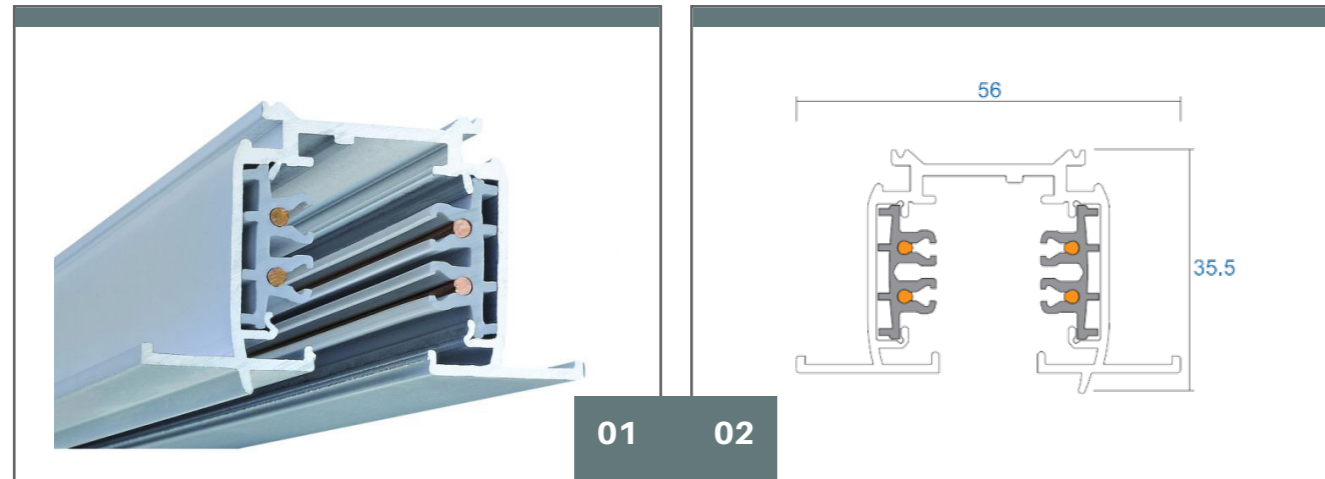
High quality 3-circuit track system for the professional lighting market
 Suitable for track lights with 3-phase adapters of all major brands
 A comprehensive range of innovative accessories, like the twisted L and T connectors
 Maximum freedom to create the ultimate track plan
 Quick and easy to install
 No need to adjust the wires after cutting the track
 Available in white, black and grey

CODE	LENGTH (MM)	DESCRIPTION
T3SDD/3535*m1	1,000 * 35 * 35	1,000mm Surface mounted 3-phase track
T3SDD/3535*m2	2,000 * 35 * 35	2,000mm Surface mounted 3-phase track
T3SDD/3535*m3	3,000 * 35 * 35	3,000mm Surface mounted 3-phase track
T3SDD/3535*m4	4,000 * 35 * 35	4,000mm Surface mounted 3-phase track

Track 3 Circuit DALI Surface



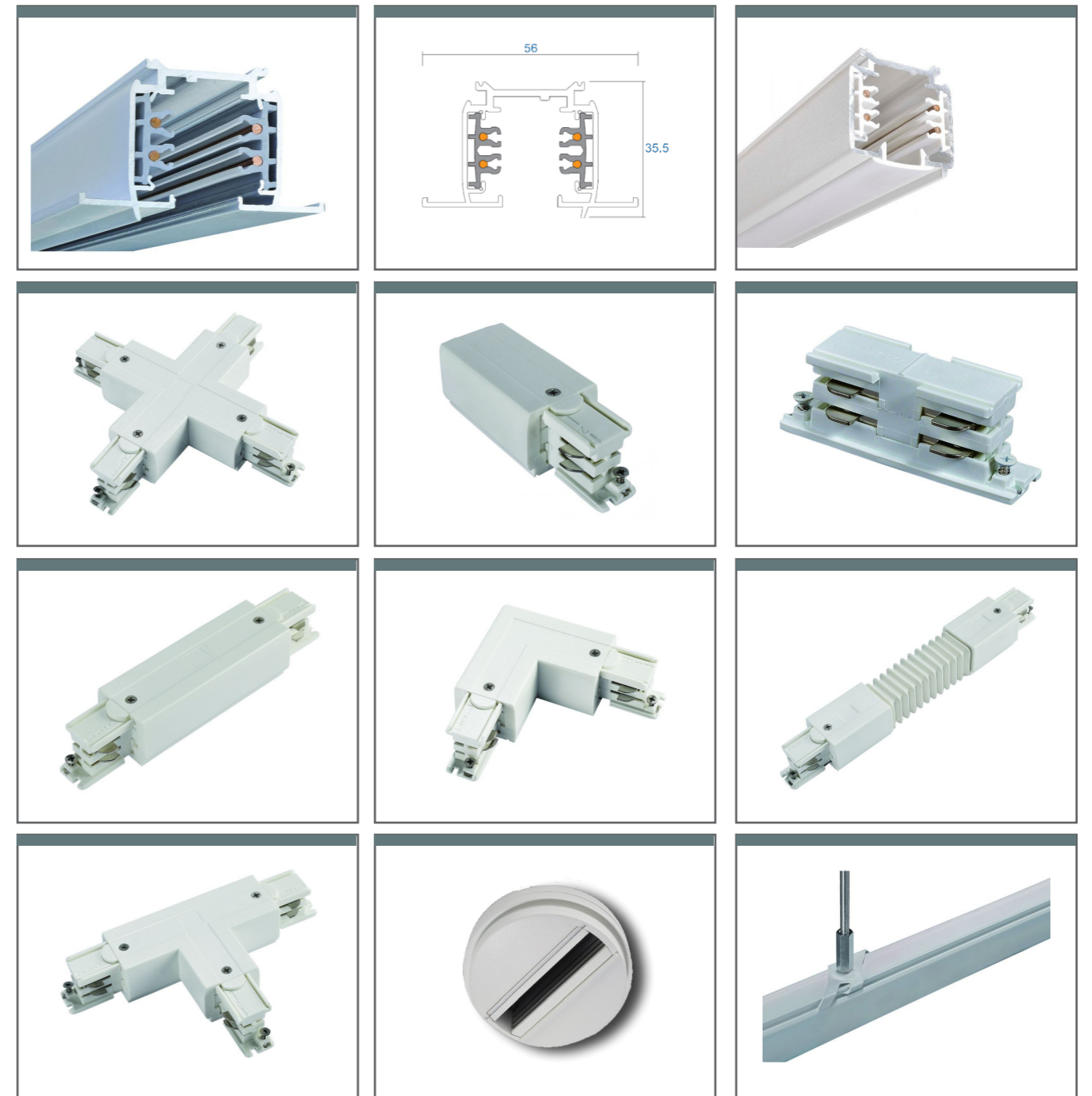
Track 3 Circuit Recessed



High quality 3-circuit track system for the professional lighting market
 Suitable for track lights with 3-phase adapters of all major brands
 A comprehensive range of innovative accessories, like the twisted L and T connectors
 Maximum freedom to create the ultimate track plan
 Quick and easy to install
 No need to adjust the wires after cutting the track
 Available in white, black and grey

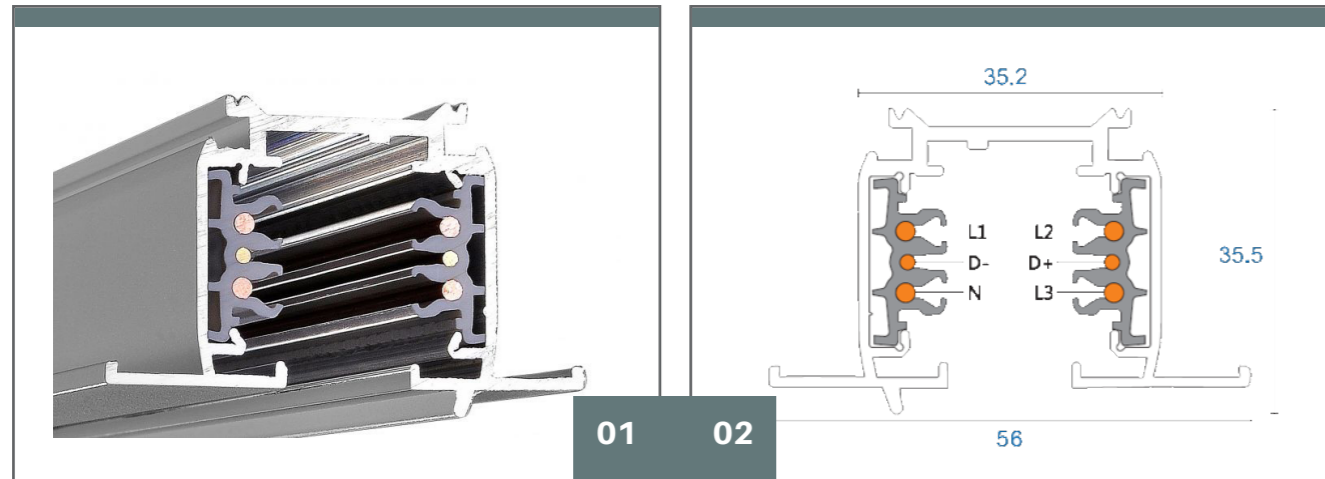
CODE	LENGTH (MM)	DESCRIPTION
T3RN/5635+m1	1,000 * 56 * 35	1,000mm Recessed 3-phase track
T3RN/5635+m2	2,000 * 56 * 35	2,000mm Recessed 3-phase track
T3RN/5635+m3	3,000 * 56 * 35	3,000mm Recessed 3-phase track
T3RN/5635+m4	4,000 * 56 * 35	4,000mm Recessed 3-phase track

Track 3 Circuit Recessed



Track 3 Circuit DALI Recessed

Track 3 Circuit DALI Recessed



High quality 3-circuit track system for the professional lighting market
 Suitable for track lights with 3-phase adapters of all major brands
 A comprehensive range of innovative accessories, like the twisted L and T connectors
 Maximum freedom to create the ultimate track plan
 Quick and easy to install
 No need to adjust the wires after cutting the track
 Available in white, black and grey

CODE	LENGTH (MM)	DESCRIPTION
T3RDD/3535*m1	1,000 * 56 * 35	1,000mm Recessed 3-phase track
T3RDD/3535*m2	2,000 * 56 * 35	2,000mm Recessed 3-phase track
T3RDD/3535*m3	3,000 * 56 * 35	3,000mm Recessed 3-phase track
T3RDD/3535*m4	4,000 * 56 * 35	4,000mm Recessed 3-phase track



Rhea 11 Spot Light

The Rhea 11 standard spot light is a stylish and compact LED track light that fits perfectly into any retail and gallery setting. The front snoot provides visual comfort. The luminaire head swivels precisely horizontal 360° and vertical 90° without any dead angle. The light, as a result, is emitted exactly where you need it.



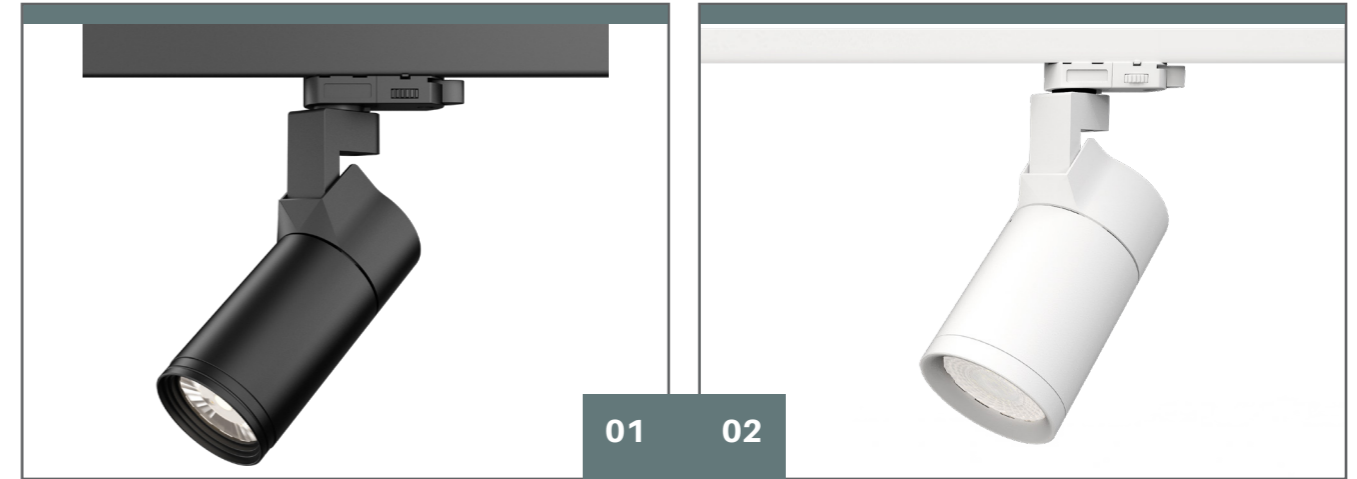
Slim and clean design with integrated driver (20W, 25W, 30W)
360°+ rotation without dead angle and 90° vertical aiming
Interchangeable lens: 15°, 24°, 38°, 60°
Citizen, Cree, Luminus, Philips COB LED'S
4 interchangeable installation bases:
Track, surface, wall or pendant mounting

Input Voltage: 220-240V | 100-120V / 100-277V AC, 50-60Hz
Dimmable: Phase, 1-10V, DALI
Installation: On 4-pin, 3-pin track
Housing Colour: white, black, silver
Operating Temperature: -20~+50°C
CRI >90 (CRI 80 / 95 Optional)

CODE	POWER (W)	LUMEN (LM) CRI80	LUMEN (LM) CRI90	DIMENSIONS (MM)
TS147N/20**11x	20	2,009 ~ 2,313	1,808 ~ 2,083	84*147
TS147N/25**11x	25	2,143 ~ 2,419	1,929 ~ 2,177	84*147
TS147N/30**11x	30	2,696 ~ 3,089	2,426 ~ 2,780	84*147

Rhea 21 Spot Light

The Rhea 21 premium spot light series uses branded COB LED Chips for a better performance with light efficiency up to 110lm/w. The Rhea 21 offers 6 different anti-glare options as honeycomb, cross louve, eye snoot, snoot, wall wash ring and barn door accessories.



Slim and clean design with integrated driver
Light efficiency up to 110 lm/W
360°+ rotation without dead angle and 90° vertical aiming
6 optical accessories to enhance the visual quality, reduce glare and light control
4 interchangeable installation bases:
Track, surface, wall or pendant mounting

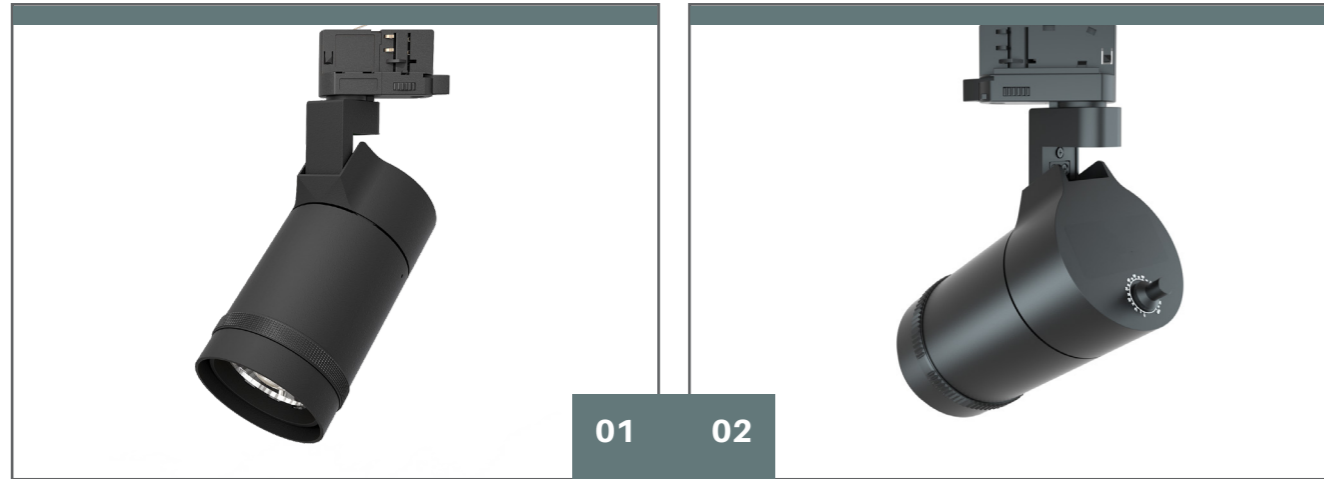
Input Voltage: 220-240V | 100-120V / 100-277V AC, 50-60Hz
Dimmable: Phase, 1-10V, DALI
Beam Angle: 15°, 24°, 38°, 60°
Installation: On 4-pin, 3-pin track
Housing Colour: white, black, silver
Operating Temperature: -20~+50°C
CRI >90 (CRI 80 / 95 Optional)

CODE	POWER (W)	LUMEN (LM) CRI80	LUMEN (LM) CRI90	DIMENSIONS (MM)
TS136N/10**21x	10	962 ~ 1,063	865 ~ 1,017	60*136
TS136N/15**21x	15	1,385 ~ 1,559	1,247 ~ 1,403	60*136
TS150N/20**21x	20	2,371 ~ 2,627	2,134 ~ 2,364	84*150
TS150N/25**21x	25	2,747 ~ 3,004	2,472 ~ 2,704	84*150
TS150N/30**21x	30	3,079 ~ 3,381	2,771 ~ 3,043	84*150



Rhea 31 Spot Light Zoomable

The Rhea 31 zoomable spot light is a stylish and compact LED track light that fits perfectly into any retail, museum and gallery setting. Its adjustable beam mechanism is designed to provide endless beam options from 15° narrow to 60° wide flood distribution. The luminaire head swivels precisely horizontal 360° and vertical 90° without any dead angle.



Beam angle adjustable mechanism provides endless beam options from a narrow to wide flood distribution by simply rotating the rubber ring

4 interchangeable installation bases:
Track, surface, wall or pendant mounting
Light efficiency is up to 90lm/W
UGR < 16
On board dimming optional
CCT changing optional

Input Voltage: 220-240V | 100-120V / 100-277V AC, 50-60Hz
Dimmable: Phase, 1-10V, DALI
Installation: On 4-pin, 3-pin track
Housing Colour: white, black, silver
Operating Temperature: -20~+50°C
CRI >90 (CRI 80 / 95 Optional)
Beam Angle 15°~ 45° & 15°~ 60°

CODE	POWER (W)	LUMEN (LM) CRI80	LUMEN (LM) CRI90	DIMENSIONS (MM)	BEAM ANGLE
TS140N/10**31x	10	687 ~ 985	618 ~ 887	60*140	15° ~ 45°
TS140N/15**31x	15	898 ~ 1,280	808 ~ 1,152	60*140	15° ~ 45°
TS147N/20**31x	20	1,895 ~ 2,227	1,706 ~ 2,004	84*147	15° ~ 60°
TS147N/25**31x	25	1,964 ~ 2,401	1,768 ~ 2,161	84*147	15° ~ 60°
TS147N/30**31x	30	2,135 ~ 2,718	1,922 ~ 2,446	84*147	15° ~ 60°

