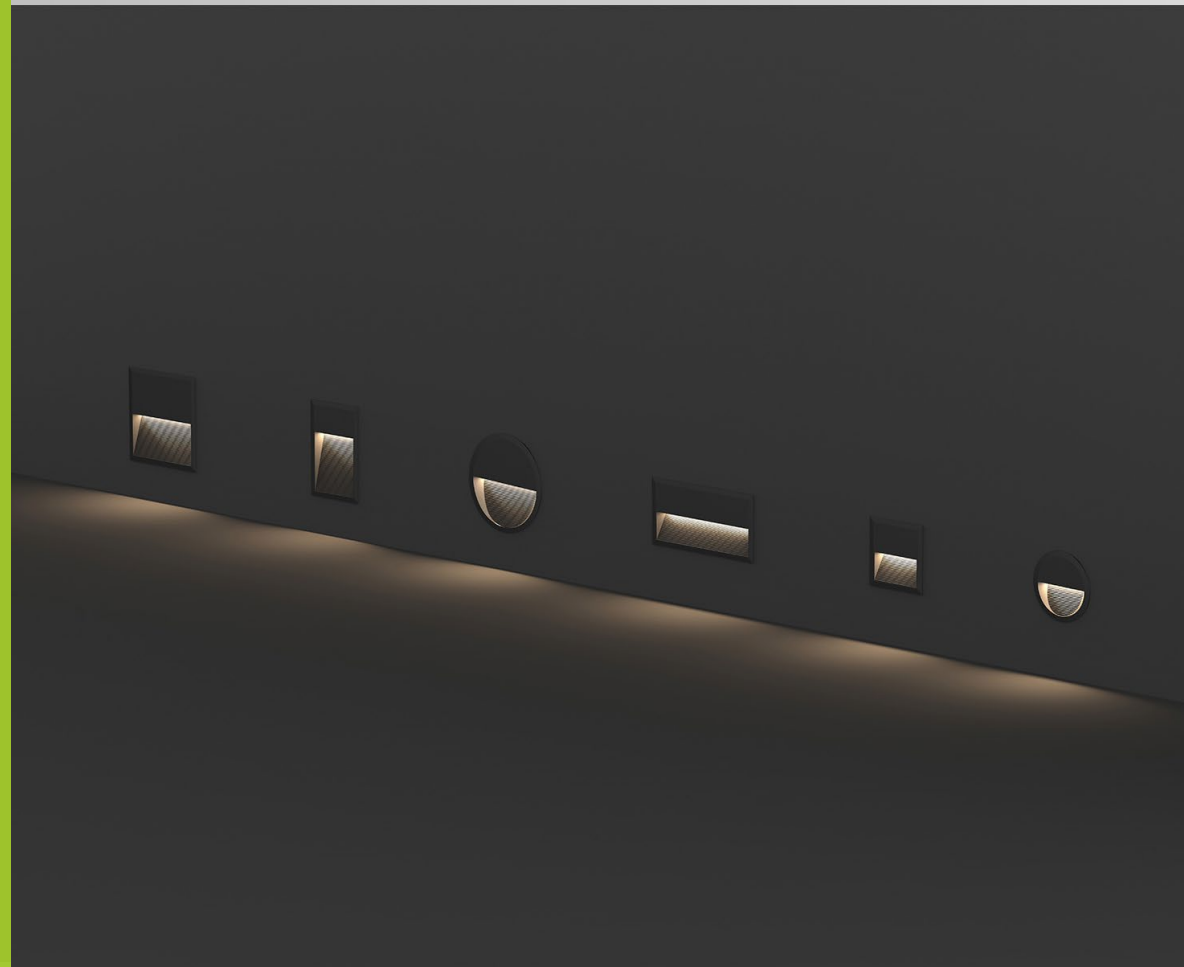


Led Step Light 60

The LED Step Light 60 is a compact wall light with recessed installation and round/square/rectangular shape options. Combined with line design and indirect lighting the step light achieves a low glare effect. IP65 ingress protection for both indoor and outdoor application



2 Lancaster Place
Electron Lane
Lanseria Corporate Estate
Lanseria
+2711(0) 4620251

genesis  ne
www.genesisonelightning.com
sales@genesisonelighting.co.za

Product Specification

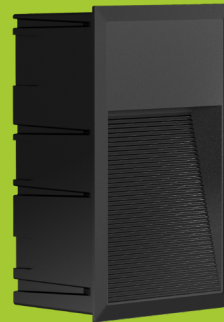
LED Step Light Recessed

Product APPLICATIONS

Suitable for general lighting applications and public areas, stairway, lobby, reception, corridors

Product FEATURES

Aluminum housing for thermal management.
IP65 IK08 protection for both indoor and outdoor application.
Loop in/out wire design.
Round/square/rectangular shape options.
Indirect lighting with hidden LED chip, low UGR.

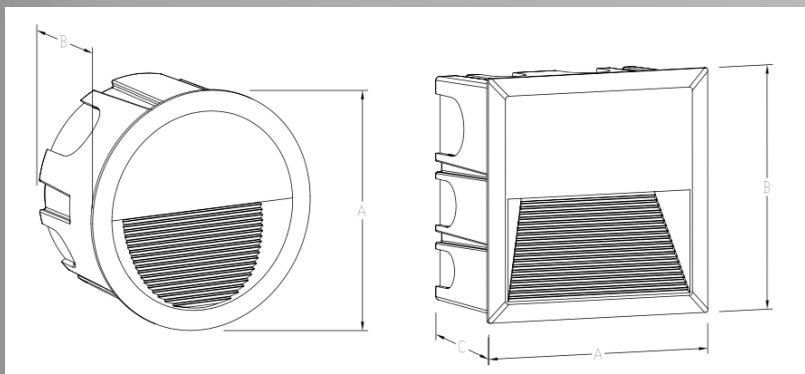


TECHNICAL DATA

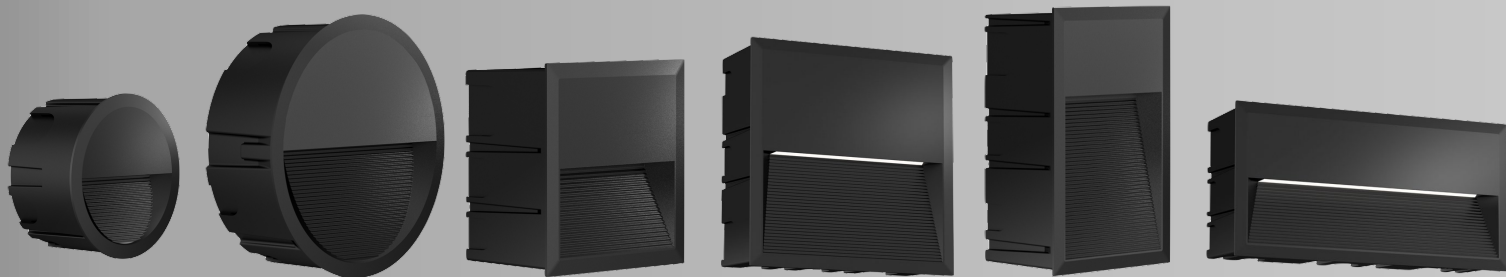
MODEL NO.	SL135N/ 05●●60A	SL200N/ 08●●60A	SL135N/ 05●●60B	SL200N/ 08●●560B	SL135N/ 05●●60C	SL270N/ 10●●60C
WATT(W)	5	8	5	8	5	10
LUMEN	150~220	350~500	150~220	300~400	150~220	350~500
RATED INPUT VOLTAGE(V)	AC200-240V					
INPUT CURRENT(MA))	Max 0.3A	Max 0.5A	Max 0.3A	Max 0.5A	Max 0.3A	Max 0.6A
SURGE PROTECTION	IEC61000-4-5(L-N:0.5KV, L/N-PE:1KV)					
EFFICACY (4000K, RA70)	50(±5%) LM/W					
CORRELATED COLOR TEMPERATURE	1-CCT:3000K/4000K/5000K/5700K					
COLOR RENDERING INDEX	Ra80					
BEAM ANGLE	60°	70°	60°	70°	70°	70°
FREQUENCY	50 / 60 Hz					
POWER FACTOR	≥0.9 at Max Load					
IP RATING	IP65					
IK RATING	IK08					
LUMINAIRE NETWEIGHT KG	0,33	0,62	0,39	0,74	0,53	0,75
GROSS WEIGHT KG	0,45	0,77	0,48	0,89	0,65	0,9
MATERIAL	Aluminum AD12					
	Optics Glass					
DIMMABLE	Non-dimmable					
FINISH	RAL9005					
FINISHING COLOUR	Black					
LIFETIME (HR)	>50,000Hrs (Ta=30°C@L70)					
INTELLIGENT CONTROL	-					
OPERATING TEMP.(°C)	-30°C ~ 45°C					
PRODUCT DIMENSION(MM)	135*78	202*78	136*136*78	201*201*78	136*202*78	271*135*78
CUT OUT (MM)	130*78	196*78	130*130*78	195*195*78	130*196*78	266*130*78
MOUNTING OPTION	Recessed					



Product DIMENSIONS



		Dimensions (mm)				Size(mm)	Cut Out (mm)
		A	B	C	D		
SL135N/05●●60A	60A-5W	135	78	-	-	135*78	130*78
SL200N/08●●60A	60A-8W	202	78	-	-	202*78	196*78
SL136N/05●●60B	60B-5W	136	136	78	-	136*136*78	130*130*78
SL200N/08●●60B	60B-8W	201	201	78	-	201*201*78	195*195*78
SL136N/05●●60C	60C-5W	136	202	78	-	136*202*78	130*196*78
SL270N/10●●60C	60C-10W	271	135	78	-	271*135*78	266*130*78



Product INSTALLATION

Installation Procedure

WARNING ⚡

1. Switch off before installation / maintenance.
2. Switch on only after complete installation and examination of the circuit.
3. Professional electrician for installation and maintenance only.

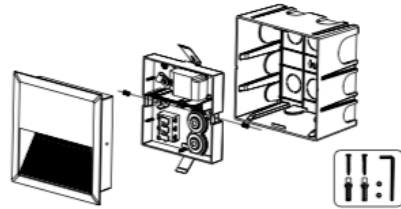


Turn Off power supply before starting any installation. Read instructions & check you have all the tools & accessories to complete the installation correctly.

How to install

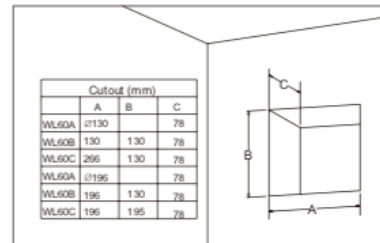
Step 1

Remove the side cap screws with a hex wrench, then open the cover.



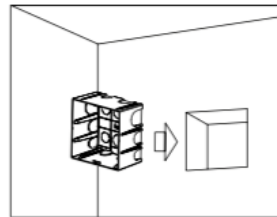
Step 2

Open a hole according to lamp size.



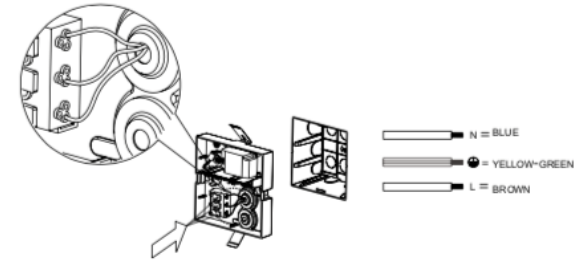
Step 3

Turn off power supply, put the embedded box into the hole, note the 'UP' mark on the bottom.



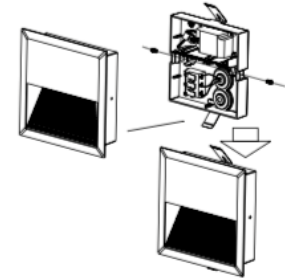
Step 4

Connect AC wires correspondingly.



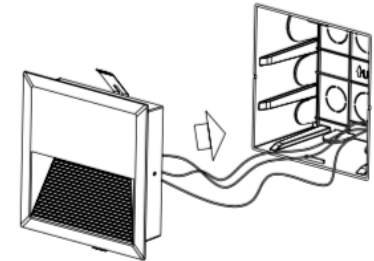
Step 5

Fix the cover with side cap screws.



Step 6

Buckle the lamp into the embedded box.



Step 7

Turn on.

