

SPECIFICATION



LED Wall Light
**ARA Wall Light 68
Series**





Introduction

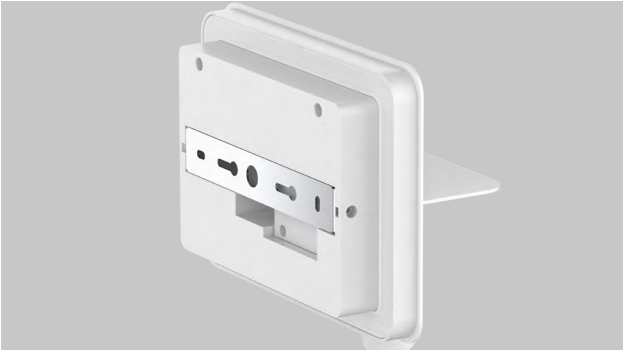
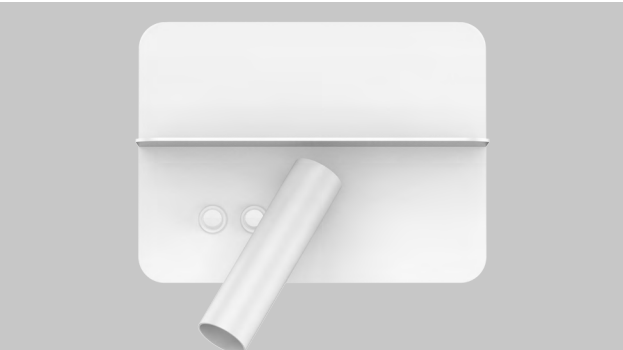
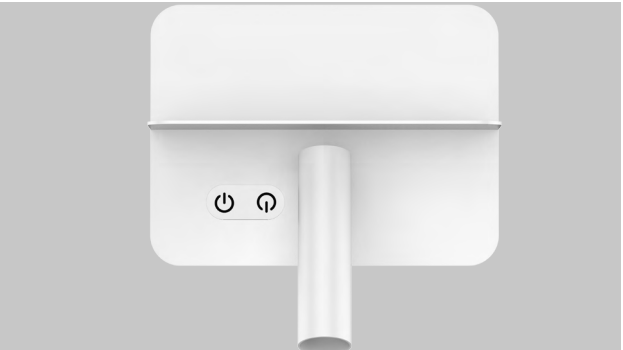
ARA Wall Light 68 is a bedside lamp with phone shelf. There are two lighting parts, CREE COB light source for the front part and a SMD2835 light source for back part. It has touch switch and rocker switch versions. Both versions have two switches for front and back lighting. For touch switch version, there is a USB interface on the left and right side, The lamp is dimmable and can be adjusted with a long press. Rocker switch version has no USB interface, no dim function.

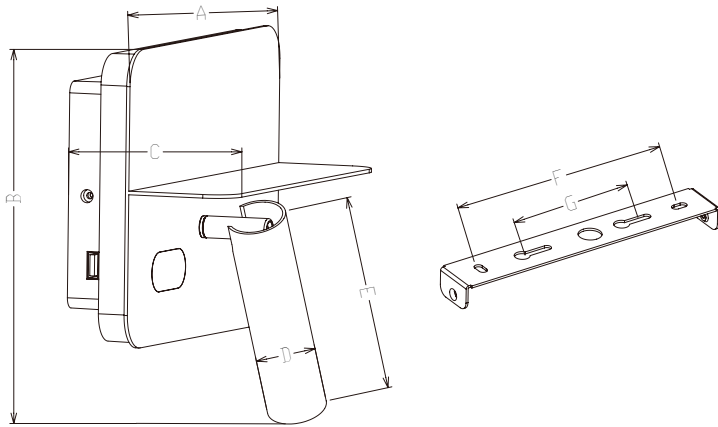
Features

- Wall mounted LED bedroom reading / Study light with spotlight and back light.
- Soft indirect back light can be regarded as night light use when the spotlight is turned off
- Anti- glare spot light creates a good study /reading experience
- Basic switch on/off version and functional touch dimming & USB chargers version are optional.
- A mini metal shelf added on the front to support an charging phone or book.
- Built in driver
- Flicker free driver provides human centric comfort to readers eyes.
- Aluminium metal front plate & spotlight head with PC back frame

Application Areas

Applications: It is designed for private lighting applications in student accommodation, hotel, home, hospital, library etc.





Technical Data Sheet

Code No.		WL200D/09**068	WL200D/09**068T
Dimension(mm)		200*202*94.8mm	
Cutout (mm)		-	
Watt(W)		9W <div><div></div><div>Focus light 4.5W</div><div>Ambient light 4.5W</div></div>	28W <div><div></div><div>Focus light 4.5W</div><div>Ambient light 4.5W</div><div>2 Group USB 5V 1500mA</div></div>
Rated Input Voltage(V)		AC230V	
Input Voltage(V)		AC200-240V	
LED Module Input		9V	
Light Source		Focus lighting CREE 1304 9V/ Back light SMD2835	
SDCM		-	
CCT(K)		2700K/3000K/4000K/5000K	
CCT Selection DIP Switch		-	
Luminous Flux (lm) ±5%	Focus	280-350	
	Ambient	160-300	
CRI		Focus lighting 80/90 Back light 80	
Beam Angle (°)		30°	
UGR		-	
LED Driver		built-in	
Dimming Option		NO	Touch dimming
Sensor		-	
Emergency Kits		-	
Electrical Class		ClassI	
Ingress Protection (IP Rating)		IP40	
Impact Resistance (IK Rating)		IK06	
Product Finishing(Base)		White RAL 9016	
Materials of Optics		PC	
Materials of Housing		Aluminum+PC	
Lifetime (hr)		L 70B50 50000hr	
Glow wire test (°C)		750°C	
Operating Temp. (°C)		-20°C ~45°C	
Storage Temp. (°C)		-20°C ~65°C	
Installation		Wall mounted	
Function(charge)		2 Group USB 5V 1500mA	

Measurement

Code	Dimension(mm)							Size(mm)	Product Weight (Kg)		Package weight (Kg)		Carton Size(cm)	Qty/ CTN	20GP (pcs)	40HQ (pcs)
	A	B	C	D	E	F	G		N.W/PC	G.W/PC	N.W/CTN	G.W/CTN				
ARA68	200	202	94.8	ø30	115	120	60	200*202*94.8	0.655	0.9	10.8	11.8	49*39*41	12	3900	10032

Driver Datesheet (Standard)

Total load wattage		5W (2 Group Power)	
		LED Back light	LED Read light
		4.5W	
Output	Line Regulation	±7%	
	Setup, Rise Time	≤0.5S	
	Flickering Index	<3%(NO RISK)	
	Output Voltage range	DC5-10V	
	Rated output current	350mA	
	Input Voltage	AC200-240V	
	Rated Input Voltage(V)	AC230V	
	Frequency	50/60HZ	
Input	Input Current	0.05A	
	Rated Input Current	0.043A	
	Power Factor	0.4	
	THD	-	
	Efficiency	≥74%@230V	
	No load wattage	<1W	
	Short circuit protection	PASS	
Protection	Over voltage protection	PASS	
	Over temperature protection	PASS	
Safety &EMC	Withstand voltage	I/P-O/P:3.75KVac, <5mA 60S; I/P-FG:1.6KVac, <5mA 60S; O/P-FG:0.5KVac, <5mA 60S	
	Isolation Resistance	I/P-O/P: 500VDC, ≥100M Ω	
	Surge	IEC/EN61000-4-5(P<25W; L-N:500V, L/N-PE:1KV)	
	EMC Emission	EN55015, EN61000-3-2	
	EMC Immunity	EN61000-4-2,3,4,5,6,8,11; EN61547	

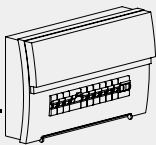
Driver Datasheet(Touch dimming)

Total load wattage		28W (Total driving power)		
		LED Back light	LED Read light	USB (2 Group)
		4.9W	4.9W	8.5W*2
Output	Line Regulation	±5%		
	Setup, Rise Time	≤0.5S		
	Flickering Index	<3%(NO RISK)		
	Output Voltage range	DC5-10V		5V
	Rated output current	380mA		1500mA*2
Input	Input Voltage	AC200-240V		
	Rated Input Voltage(V)	AC230V		
	Frequency	50/60Hz		
	Input Current	<0.28A		
	Rated Input Current	<0.25A		
	Power Factor	-		
	THD	-		
	Efficiency	≥80%@230V		
	No load wattage	<1W		
Protection	Short circuit protection	PASS		
	Over voltage protection	PASS		
	Over temperature protection	PASS		
Safety &EMC	Withstand voltage	I/P-O/P:3.75KVac,<5mA 60S; I/P-FG:1.6KVac,<5mA 60S; O/P-FG:0.5KVac,<5mA 60S		
	Isolation Resistance	I/P-O/P: 500VDC, ≥100M Ω		
	Surge	IEC/EN61000-4-5 (P≥25w L-N:1KV, L/N-PE:2KV)		
	EMC Emission	EN55015, EN61000-3-2		
	EMC Immunity	EN61000-4-2,3,4,5,6,8,11; EN61547		

Installation Instruction

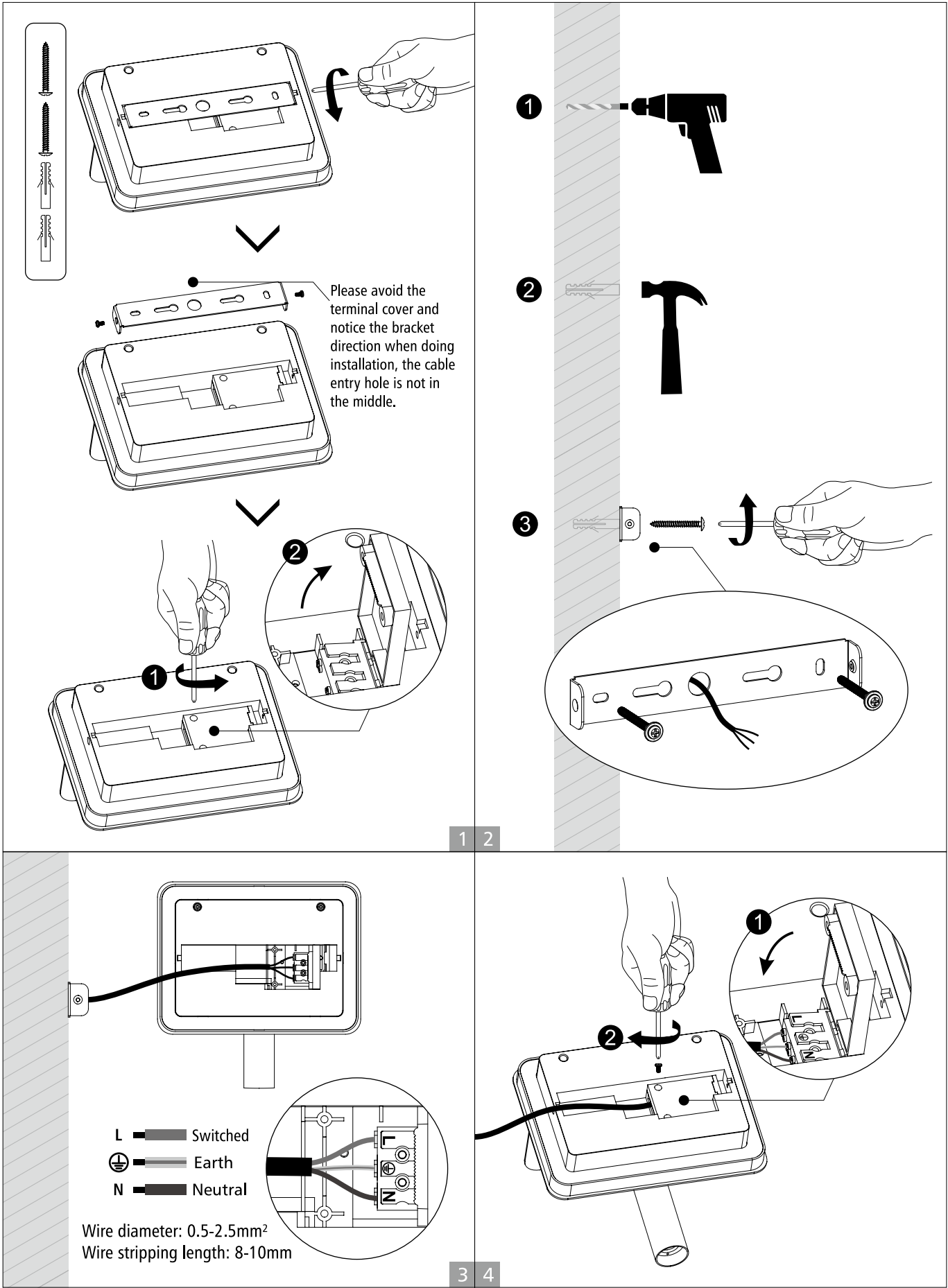
WARNING

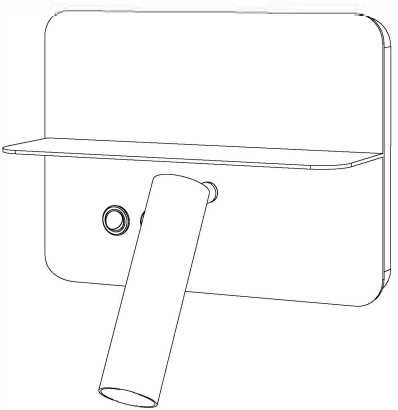
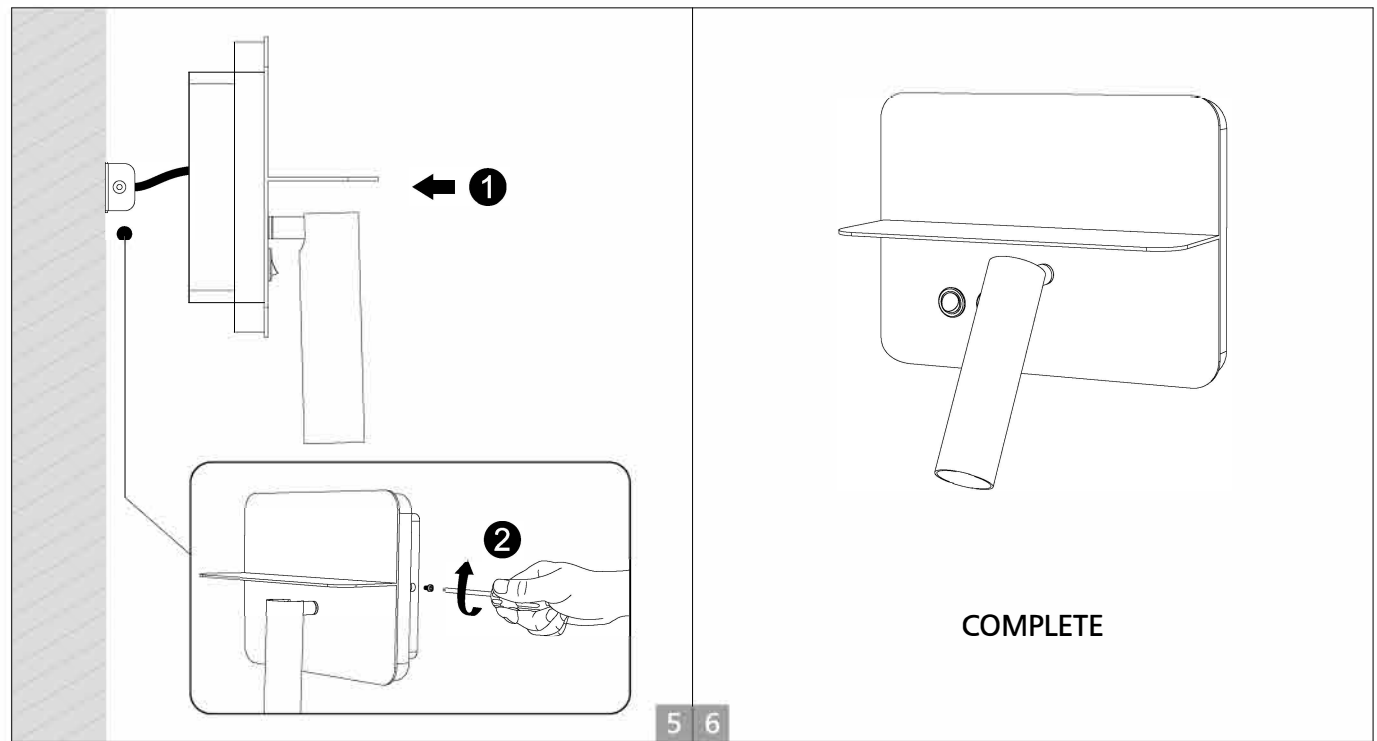
- 1.Switch off before installation.
- 2.Switch on only after complete installation and examination of the circuit.
- 3.Professional electrician for installation and maintenance only.



Turn Off
Power Supply

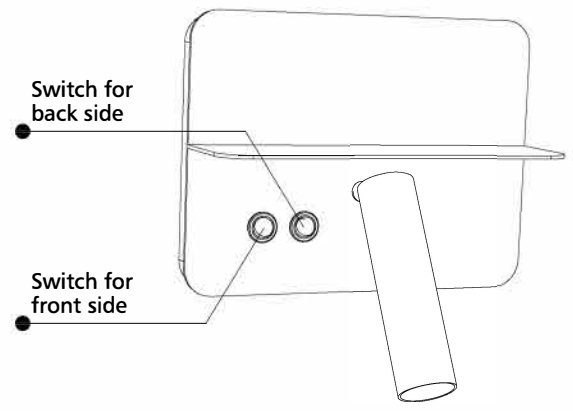
Wall mounting with mobile phone shelf bracket



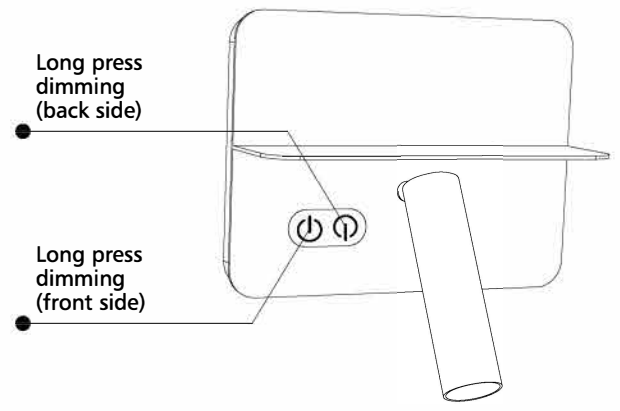


COMPLETE

Standard version (ON/OFF)



Touch version (Dimmable)





The Professional Choice in LED Lighting

www.genesisone.co.za sales@genesisone.co.za TEL: +27 (0)11 4620251

Add: 2 Lancaster Place, Electron Lane, Lanseria Corporate Estate, Lanseria 1748 Johannesburg, South Africa