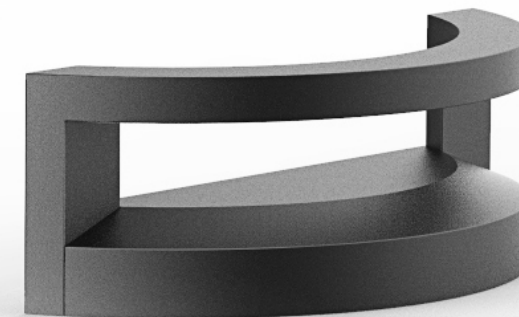


ARA 46 Wall Light



Genesis One Lighting Pty LTD
2 Lancaster Place
Lanseria Corporate Estate
Lanseria
Johannesburg



Introduction

ARA 46 wall light won the 2020 IF Award. It uses a special optical structure to deliver a layering of indirect and soft light.

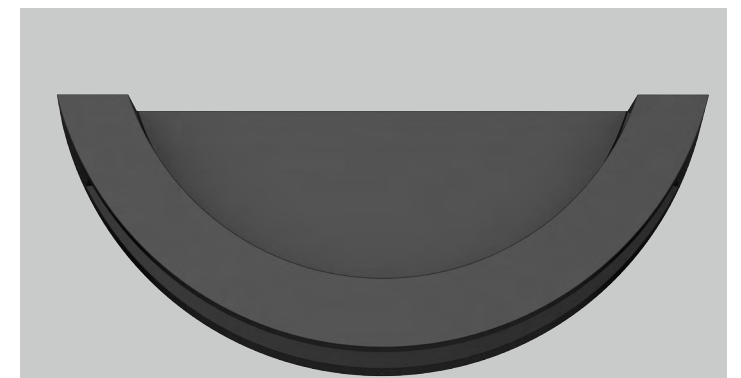
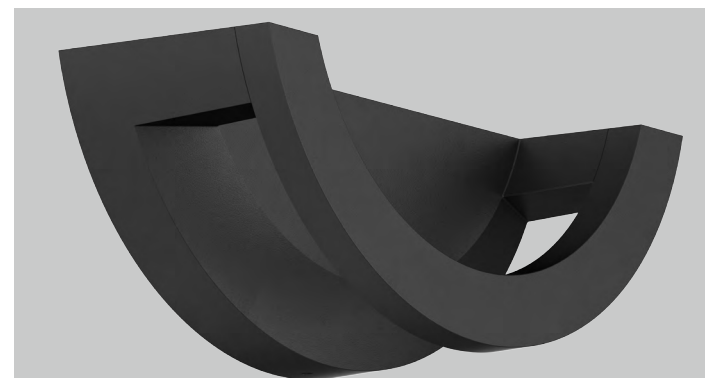
ARA 46 uses high lumen SMD LED light source with high CRI, aluminum body with great thermal management. It can be installed individually as a wall light to create a charming atmosphere or in groups, to create various shapes.

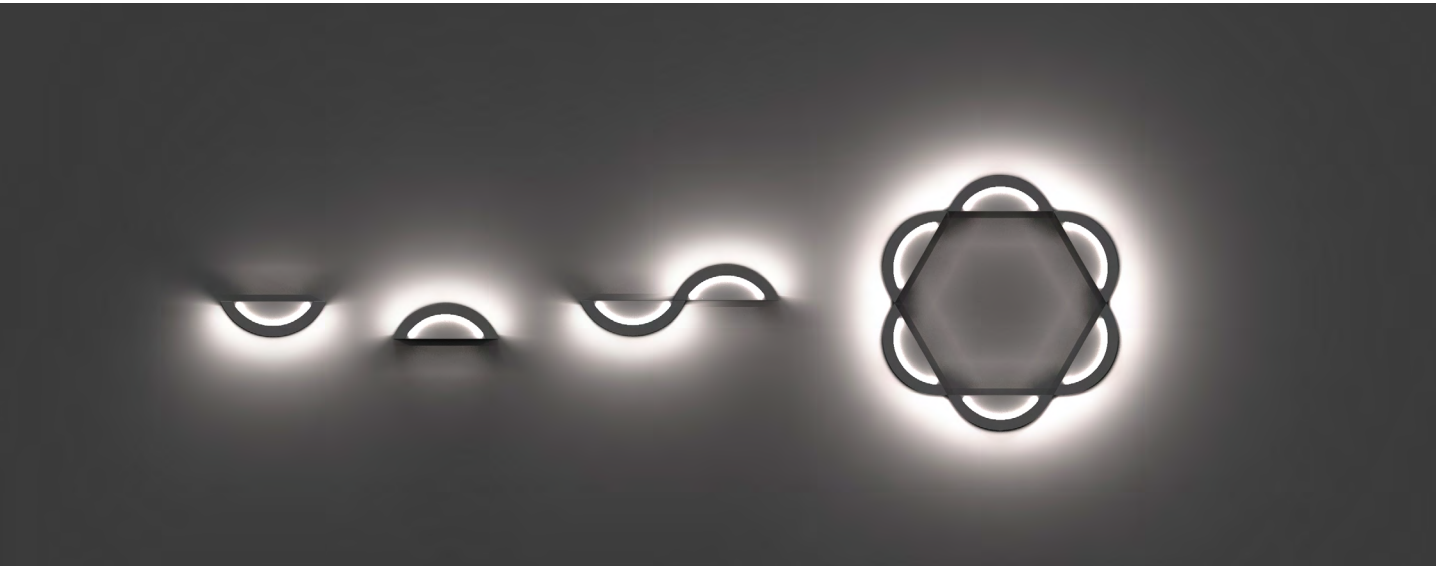
Features

- With IF design Award.
- Indirect lighting design offers a great visual experience.
- Special shape design with charming light spot.
- High lumen efficiency, 50LM/W.
- IP65 IK08 high protection.
- Various DIY shape available.

Application Areas

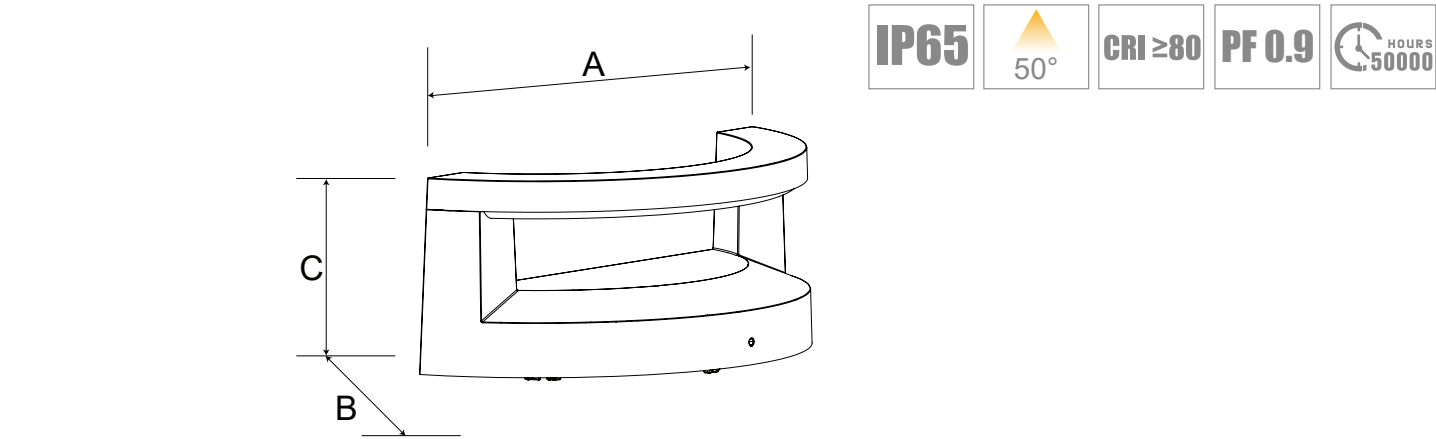
Townhouse, hotel, restaurant. Garden area: Pathway, Etc...





Technical Data Sheet

Code No.			WL204N/10**046		
Dimension(mm)			204×81×78		
Cutout (mm)			-		
Watt(W)			10W		
Rated Input Voltage(V)			AC200-240V		
Input Voltage(V)			AC230V		
LED Module Input			DC72V 135mA		
Light Source			SMD		
SDCM			<6		
CCT(K)			1-CCT: 3000K/4000K/5000K/5700K		
CCT Selection DIP Switch			NO		
Luminous Flux (lm) ±5%	Non-DIM	1-CCT	490-530		
	DIM		-		
	Non-DIM	3-CCT	-		
	DIM		-		
CRI			Ra>80		
Beam Angle (°)			50°		
UGR			-		
LED Driver			Built-in		
Dimming Option			-		
Sensor			-		
Emergency Kits			-		
Electrical Class			Class I		
Ingress Protection (IP Rating)			IP65		
Impact Resistance (IK Rating)			IK08		
Product Finishing(Base)			Black RAL9005		
Materials of Optics			PC		
Materials of Housing			Aluminum		
Lifetime (hr)			50,000h		
Glow wire test (°C)			850°C		
Operating Temp. (°C)			-20°C ~45°C		
Storage Temp. (°C)			-20°C ~65°C		
Installation			Wall mount		



Measurement

Code	Dimension(mm)			Size(mm)	Product Weight (Kg)		Package weight (Kg)		Carton Size(cm)	Qty/ CTN	20GP (pcs)	40HQ (pcs)
	A	B	C		N.W/PC	G.W/PC	N.W/CTN	G.W/CTN				
10W	204	81	78	204×81×78	0.502	0.604	14.5	15.4	54.5×37×45	24	7440	16896

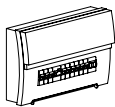
Driver Datasheet (Non-dimmable)

Total load wattage		10W
Output	Output Voltage range	65-75V
	Rated output current	135mA
	Line Regulation	±5%
	Setup, Rise Time	≤0.5S
	Flickering Index	-
Input	Input Voltage	AC200-240V
	Rated Input Voltage(V)	230V
	Frequency	50/60Hz
	Input Current	0.06A
	Rated Input Current	0.05A
	Power Factor	0.9
	THD	-
	Efficiency	≥88%
	No load wattage	<0.5W
Protection	Short circuit protection	Pass
	Over voltage protection	Pass
	Over temperature protection	Pass
Safety &EMC	Withstand voltage	-
	Isolation Resistance	I/P-O/P: 500VDC, ≥100M Ω
	Surge	IEC61000-4-5(L-N:0.5KV, L/N-PE:1KV)
	EMC Emission	EN55015, EN61000-3-2
	EMC Immunity	EN61000-4-2,3,4,5,6,8,11; EN61547

Installation Procedure

WARNING ⚡

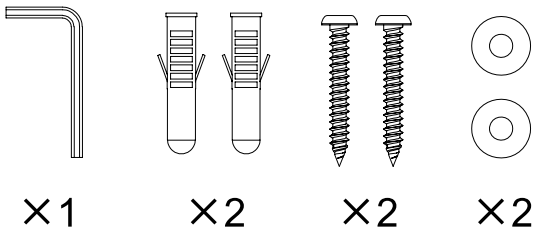
- 1.Switch off before installation / maintenance.
- 2.Switch on only after complete installation and examination of the circuit.
- 3.Professional electrician for installation and maintenance only.



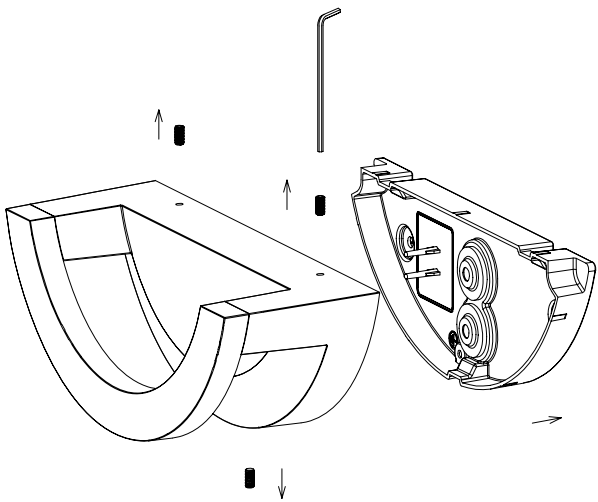
Turn Off power supply before starting any installation. Read instructions & check you have all the tools & accessories to complete the installation correctly.

Wall mount installation

Accessory Package

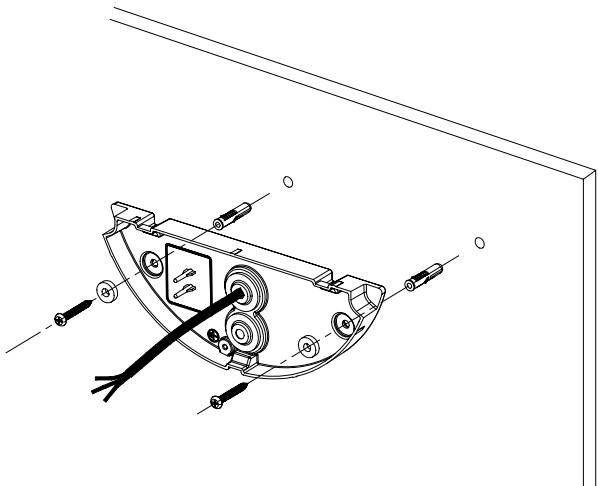


Step 1



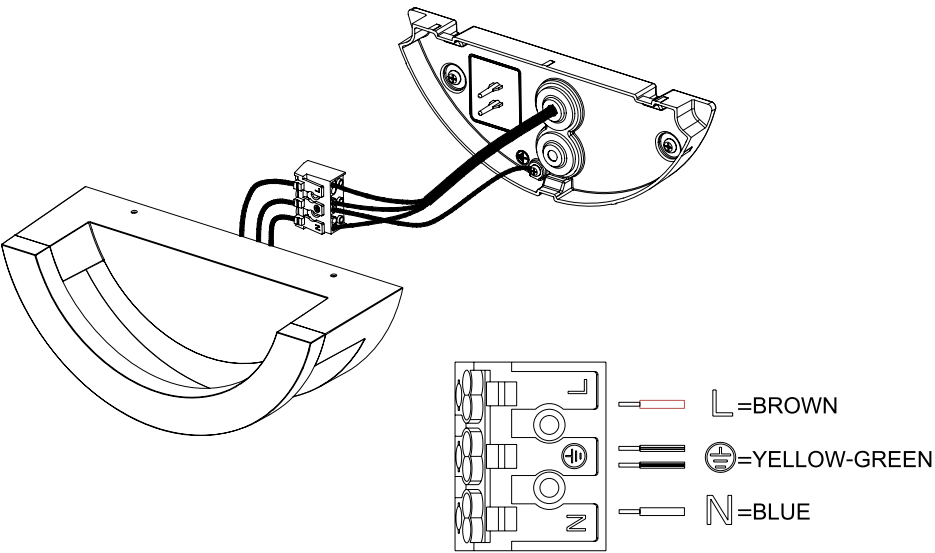
Remove the screws and open the back plate.

Step 2



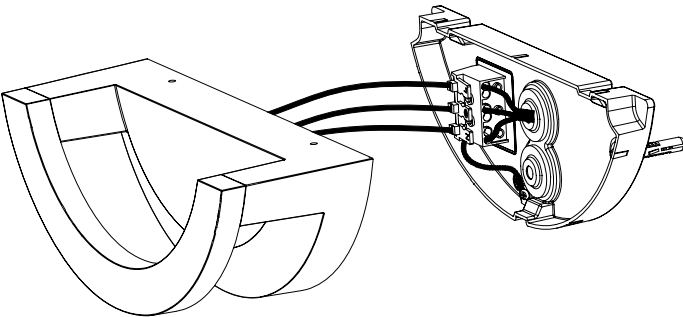
Wire through the waterproof rubber mat, fix the back plate on surface.

Step 3



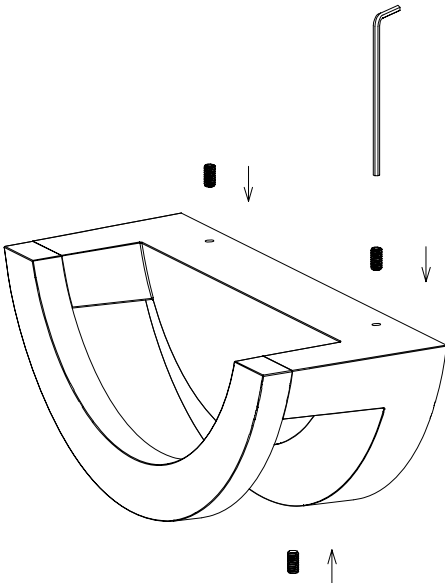
Connect AC wires correspondingly.

Step 4



Fix the connector in correct position on back plate.

Step 5



Lock the screws to fix the lamp.



The Professional choice in LED lighting