



## ARA 75 Series

Genesis One Lighting Pty LTD  
2 Lancaster Place  
Lanseria Corporate Estate  
Lanseria  
Johannesburg



## Introduction

ARA75 is an ultra-thin design wall light. It uses a SMD light source, illuminating from both ends with a PC lens creating a wall-washing optical effect. The up and down lighting design creates a beautiful architectural finish to any building.

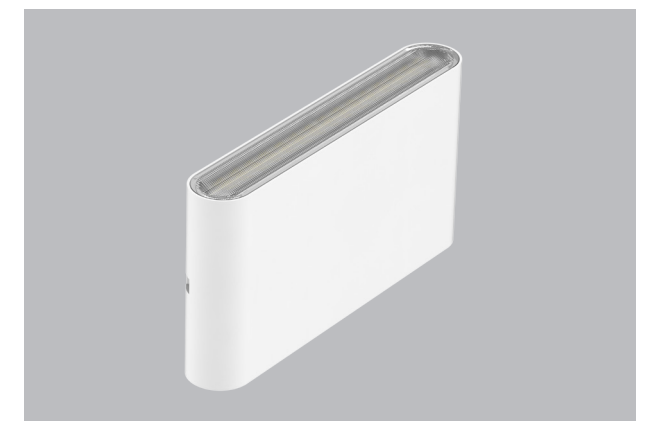
ARA 75 is made with ADC12 Aluminum which offers a great heat dissipation. IP65 waterproof will suit to a wider application area.

## Features

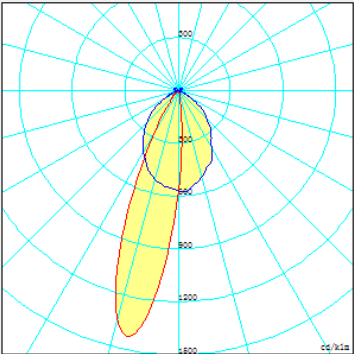
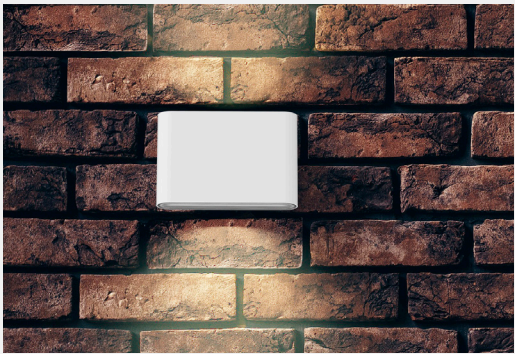
- Ultra-thin with 30.5mm thickness.
- Up & down lighting design.
- Wall-washer design with polarized lens 8 degree.
- IP65 waterproof.
- Interchangeable CCT(3000K+4000K+5700K) with slide switch.
- Internal flicker free driver.

## Application Areas

It is designed for indoor and outdoor lighting applications hotel, park, and corridors etc.

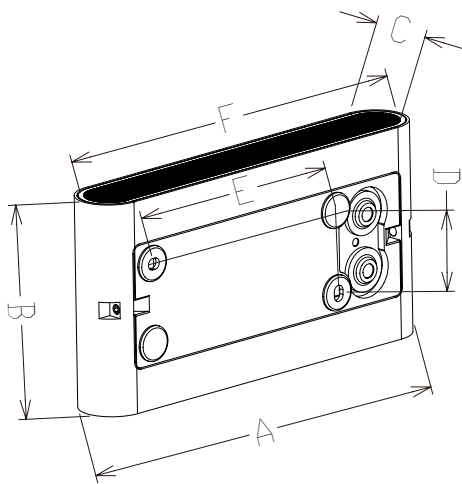






## Technical Data Sheet

Code No.			WL135N/06**075*	WL175N/10**075*
Dimension(mm)			135*90*30.5	175*90*30.5
Cutout (mm)			-	
Watt(W)			6W	10W
Rated Input Voltage(V)			AC220-240V	
Input Voltage(V)			AC230V	
LED Module Input			-	
Light Source			SMD2835	
SDCM			<6	
CCT(K)			3000K/4000K/5000K/5700K	3000K/4000K/5700K
CCT Selection DIP Switch			YES	
Luminous Flux (lm) ±5%	Non-DIM	1-CCT	530-670	940-1050
	DIM		-	-
	Non-DIM	3-CCT	540-680	950-1060
	DIM		-	-
CRI			80	
Beam Angle (°)			Polarized lens 8°	
UGR			-	
LED Driver			Built-in	
Dimming Option			NO	
Sensor			NO	
Emergency Kits			NO	
Electrical Class			Class I	
Ingress Protection (IP Rating)			IP65	
Impact Resistance (IK Rating)			IK08	
Product Finishing(Base)			White RAL 9016/Black RAL 9005	
Materials of Optics			PC	
Materials of Housing			Aluminum ADC12	
Lifetime (hr)			L 70B50 50000hr	
Glow wire test (°C )			750°C	
Operating Temp. (°C )			-20°C ~45°C	
Storage Temp. (°C )			-20°C ~65°C	
Installation			Wall mount	



## Measurement

Code	Dimension(mm)			D	E	Size(mm)	Product Weight (Kg)		Package weight (Kg)		Carton Size(cm)	Qty/CTN	20GP (pcs)	40HQ (pcs)
	A	B	C				N.W/PC	G.W/PC	N.W/CTN	G.W/CTN				
ARA75-6W	135	90	30.5	36	66.1	135*90*30.5	0.47	0.62	11.2	12.4	39*33.5*20	18PCS	19620	47970
ARA75-10W	175	90	30.5	34.5	101.5	175*90*30.5	0.57	0.72	13	14.2	41.5*39*20	18PCS	14202	35640

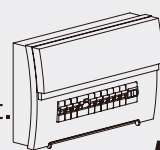
## Driver Datasheet (Non-dimmable)

Total load wattage		6W	10W
Output	Output Voltage range	DC:30-40V	
	Rated output current	145mA	
	Line Regulation	±5%	
	Setup, Rise Time	≤0.5S	
	Flickering Index	<3%(NO RISK)	
Input	Input Voltage	AC220-240V	
	Rated Input Voltage(V)	AC230V	
	Frequency	50/60Hz	
	Input Current	0.038A	0.055A
	Rated Input Current	0.033A	0.048A
	Power Factor	0.8 @230V	
	THD	-	
	Efficiency	82%@230V	
	No load wattage	<0.5W	
Protection	Short circuit protection	Pass	
	Over voltage protection	Pass	
	Over temperature protection	Pass	
Safety &EMC	Withstand voltage	I/P-O/P:3.75KVac, <5mA 60S	
	Isolation Resistance	I/P-O/P: 500VDC, ≥100M Ω	
	Surge	IEC/EN61000-4-5( P<25W; L-N:500V)	
	EMC Emission	EN55015, EN61000-3-2	
	EMC Immunity	EN61000-4-2,3,4,5,6,8,11; EN61547	

## Installation Instruction

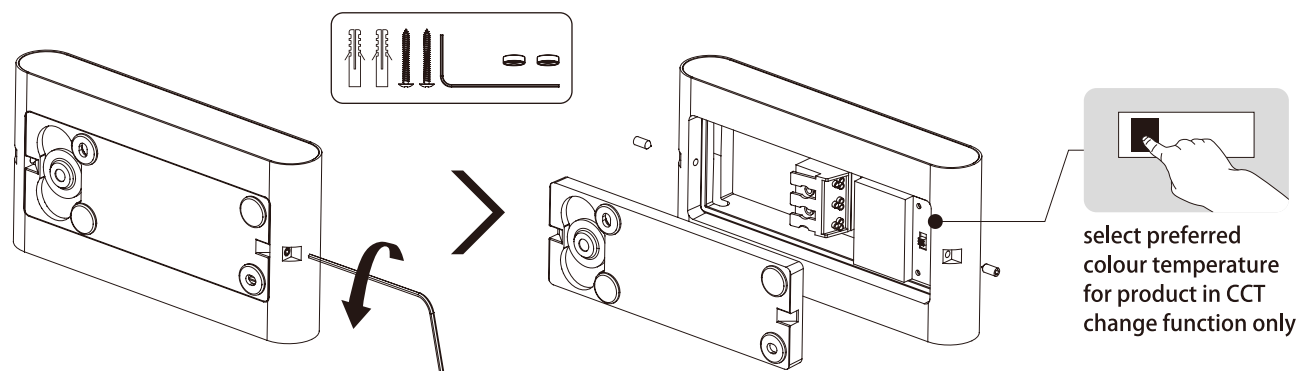
### WARNING

1. Switch off before installation.
2. Switch on only after complete installation and examination of the circuit.
3. Professional electrician for installation and maintenance only.

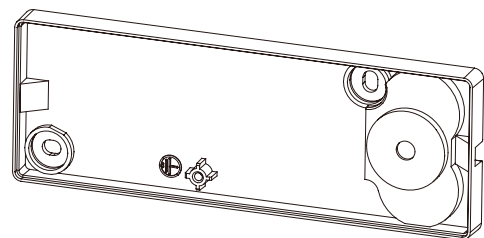


Turn Off  
Power Supply

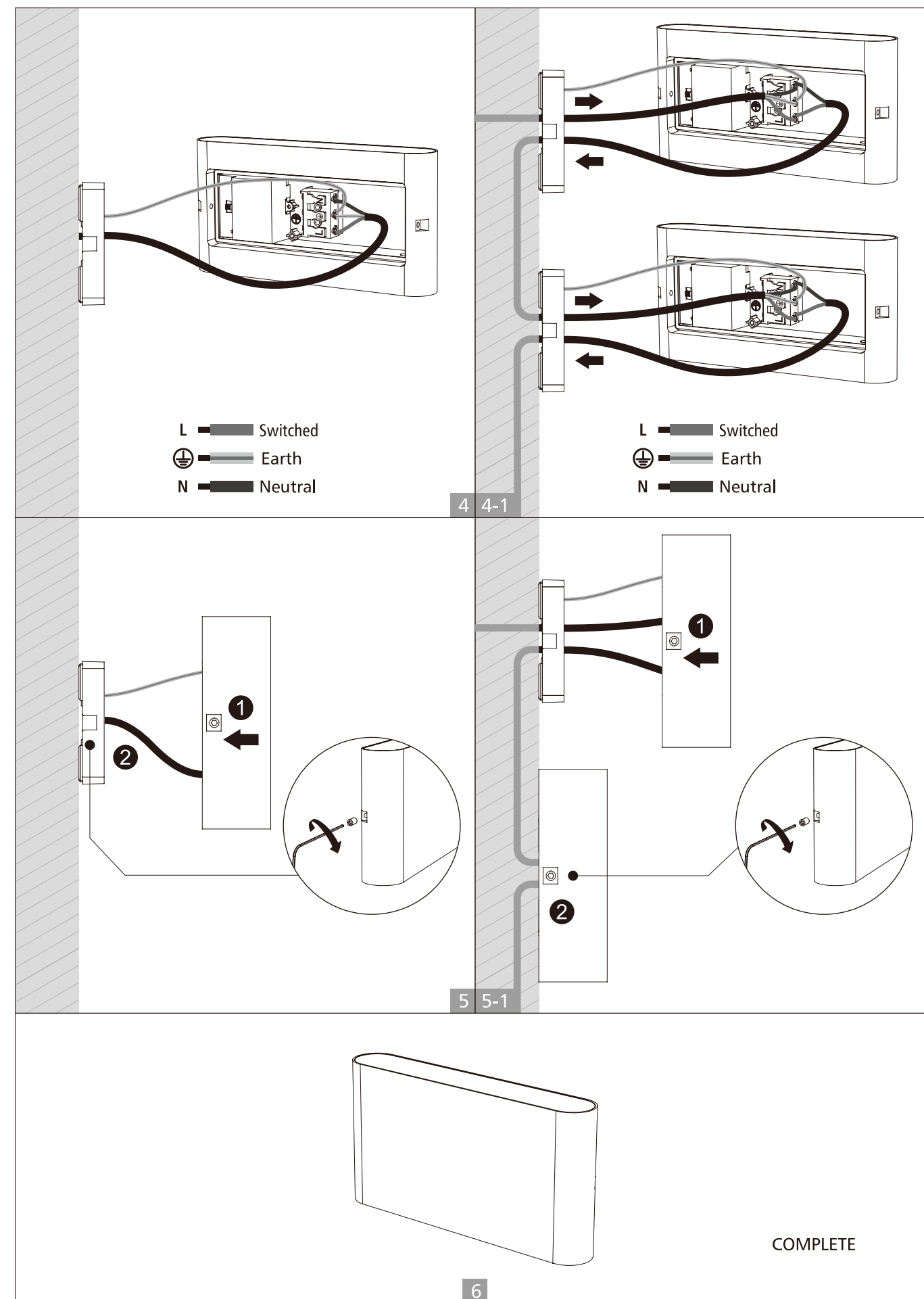
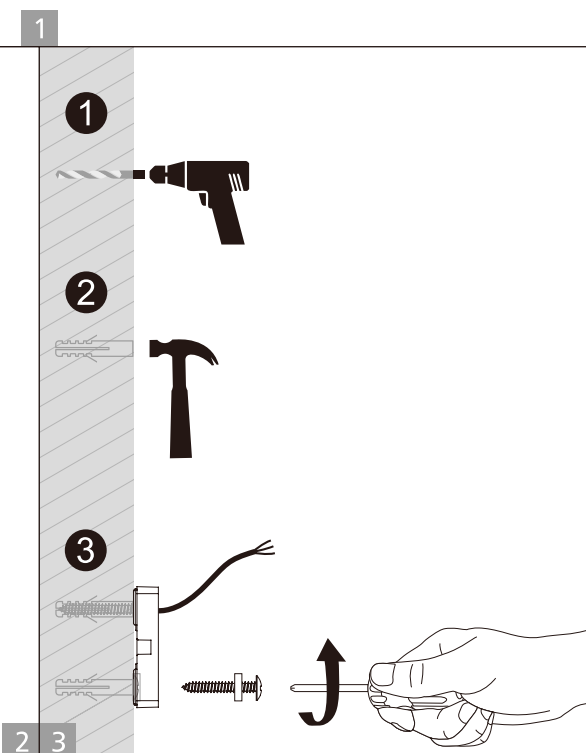
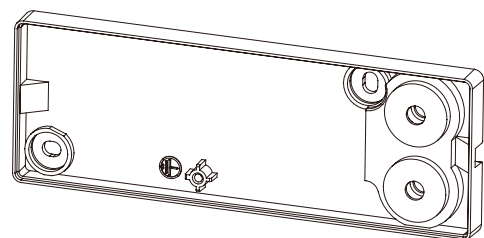
## Wall mounted installation



Mains Cable entry (1X)



Mains Cable entries (2X)





The Professional choice in LED lighting

