

Flood Light Series

The Vantage flood light series has been carefully compiled to provide the right lighting solution for the end customer. Whether the application is for residential, commercial, industrial or lighting of sports arenas, the Vantage range has an application specific flood light.



11

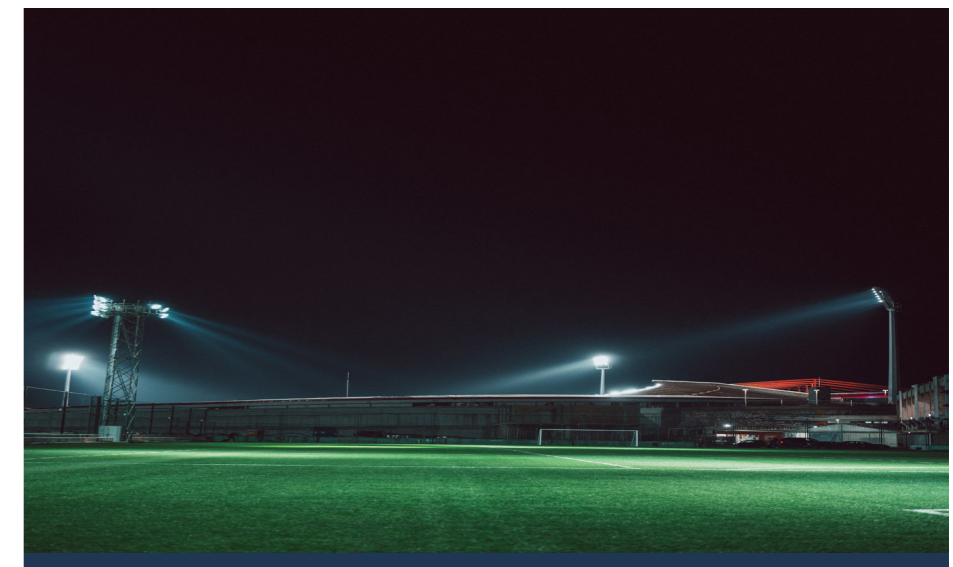
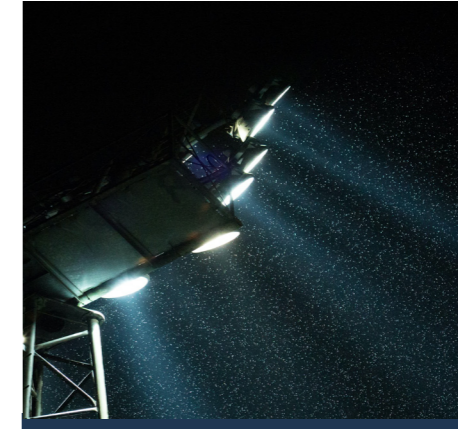


- Applications
- Security
- Perimeter
- Sporting facilities
- High Mast
- Docking
- Loading bays

The Vantage flood light series has professional optics, facilitating numerous beam angle choices that can be selected to suit the required lighting and application specification. Traditionally flood lights have wide beam angles, resulting in wasted light and increased number of fittings required where minimum lux requirements need to be achieved. With precise optics, lux levels can be achieved with fewer fittings and lower power consumption.

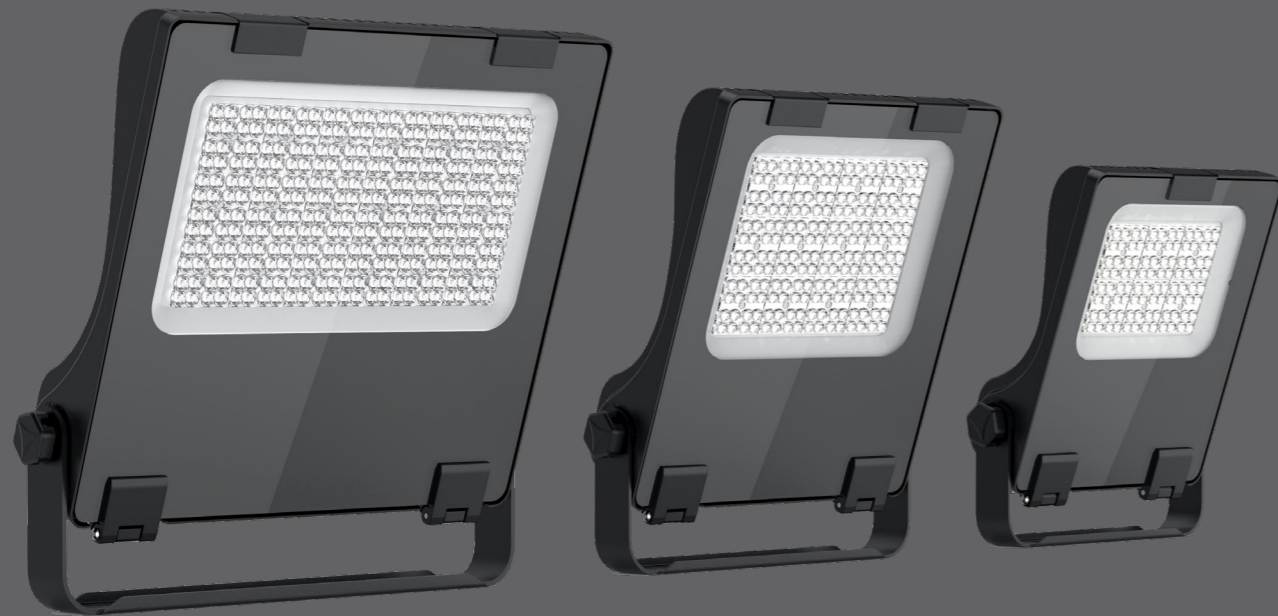
Vantage flood lights use the highest quality LED chips and drivers in conjunction with scientifically designed heat management systems providing exceptionally long life spans based on IECTM21 and LM 79 test reports.

Flood Light Series



Vantage 08 Flood Light

The Vantage 08 is a classic flood light that boasts 218,000hrs (L70) and is suitable for a wide range of applications. The Vantage 08 has 11 different beam angles to ensure precision for sports, recreation and general applications.



Applications
Recreational sports
Parking lots
Billboard lighting
Building facades
Other area lighting application

Finish: powder coating
Material: aluminium alloy housing
Optics: PC optic lens
Asymmetric floodlight
145lm/W
11 variable beam angles
U type bracket and pole mounting bracket
Pole mounting adaptor 42mm/60mm/76mm
Surge protection:
6kV line-line, 10kV line-earth

IP66
IK08
External respirator to avoid fogging and condensation
CCT:5000K (3000K/4000K Optional)
Life hours: (LM79 /TM21)
61,000hrs-L90
134,000hrs-L80
218,000hrs-L70

Vantage 08 Flood Light

The Vantage 08 flood light's innovative design provides functionality and durability. The buckle design allows for ease of maintenance and the external vent avoids internal fogging and frosting.



CODE	POWER (W)	LUMEN (LM)	DIMENSIONS (MM)
FLD4N/04050008	40	5,800	308*359 *82
FLD4N/06050008	60	8,700	308*359 *82
FLD4N/08050008	80	11,600	308*359* 82
FLD4N/10050008	100	14,500	366*413* 83
FLD4N/12050008	120	17,400	366*413* 83
FLD4N/15050008	150	21,750	462*452* 87
FLD4N/18050008	180	26,100	462*452 *87
FLD4N/20050008	200	29,000	462*452 *87
FLD4N/24050008	240	32,800	462*452*87



Vantage 11 Flood Light

The Vantage 11 is a classic LED flood light with the added advantage of a wide range of power options and multiple beam angles to suit most applications. The Vantage 11 has an external vent / respirator to prevent internal fogging and condensation.



Applications
Recreational sports
Parking lots
Billboard lighting
Building facades

6 sizes covering 30W to 300W

Multiples optics to suit all sports and floodlighting applications
High lumen output 135lm/w

External vent, avoid internal fogging and frosting
Wide choice of optics to suit more applications:
asymmetrical and symmetrical

Surge protection

50W:
6kV line-line, 6kV line-earth
100-200W:
6kV line-line, 10kV line-earth
300W:
6kV line-line, 12kV line-earth

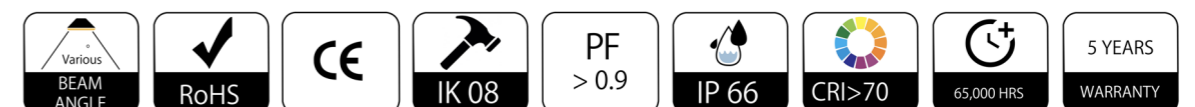
Control: DALI, dimmable, PIR sensor, photocell
Power factor >0.92
Mounting options: Bracket mounting and pole mounting
Life hours: (LM79 /TM21)
>68,000 Hrs L70 B10

Vantage 11 Flood Light

The Vantage 11 flood light's innovative design provides functionality and durability. An external vent to avoid fogging and condensation.



CODE	POWER (W)	LUMEN (LM)	DIMENSIONS (MM)
FLD3N/03050011	30	4,050	300*240*69
FLD3N/05050011	50	6,250	300*240*69
FLD3N/10050011	100	12,500	335*295*71
FLD3N/15050011	150	18,750	375*320*75
FLD3N/20050011	200	25,000	400*345*78
FLD3N/30050011	300	37,500	464*410*83



Vantage 23 Flood Light

The Vantage 23 has multiple lighting distribution choices, including symmetric and asymmetric beam angles, which provides flexibility for most applications and requirements. The Vantage 23 is suitable for indoor or outdoor sports facilities.



Applications
Recreational sports
Parking lots
Billboard lighting
Building facades
General lighting application

Finish: powder coating
Material: aluminium alloy housing
Optics: PC optic lens
Asymmetric floodlight with tempered glass cover
125 lm/W
Pole mounting adaptor
42mm / 60mm / 76mm

Surge protection:
50W
6kV line-line, 6kV line-earth
100W-200W
6kV line-line, 10kV line-earth
300W
6kV line-line, 12kV line-earth
IP66
IK08
External respirator to avoid fogging and frosting
Beam angle 120° (Standard), F06401, F06402, F06403, F06404
Life hours: (LM79 / TM21)
163,000 (Ta 30 L70)

Vantage 23 Flood Light

The Vantage 23 has an optional asymmetrical lighting distribution that improves the light utilization and avoids light pollution as its beam angle reduces glare and increases uniformity.



CODE	POWER (W)	LUMEN (LM)	DIMENSIONS (MM)
FLD3N/05050023	50	6,000	267*228*55
FLD3N/10050023	100	12,500	314*269*61
FLD3N/15050023	150	18,750	360*302*67
FLD3N/20050023	200	25,000	398*343*70
FLD3N/30050023	300	37,500	470*406*80



Vantage 23 Marine Flood Light

In seaside applications, high levels of humidity are experienced that threaten normal LED luminaire lifespans. Corrosion is always a problem that end users and specifiers should consider when selecting a luminaire. The Vantage 23 Marine is not only suitable for sea side applications but also for indoor swimming pools where CL2 exists in the air.



Applications

Saline environments,
Swimming pools
Coastal ship
Chemical plants

5 most popular watts available
50/100/150/200/300W
130lm/W

Fixture is made of die-cast aluminium and branded LED chips
Special surface treatment with excellent anti-corrosion properties
The vent can be replaced with a gland to seal it against CL2 air

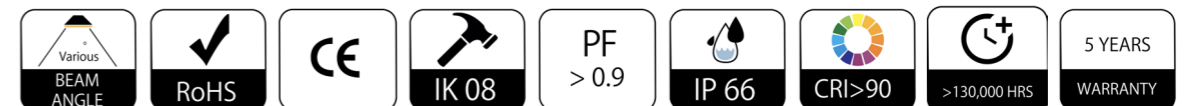
Asymmetric, wide, narrow lighting distributions optional
IP66, impact resistance IK08 and surge protection 10KV
Applicable for saline environments, swimming pools, coastal ship, chemical plants
Life hours: (LM79 /TM21)
82,000hrs-L80
131,000hrs-L70
5 years warranty

Vantage 23 Marine Flood Light

The Vantage 23 marine grade lighting solution is the perfect choice for coastal applications or where chlorine CL2 exists in the air.



CODE	POWER (W)	LUMEN (LM)	DIMENSIONS (MM)
FLD4N/05050023M	50	7,000	267*228*55
FLD4N/10050023M	100	14,000	314*269*61
FLD4N/15050023M	150	21,000	360*302*67
FLD4N/20050023M	200	38,000	398*343*70
FLD4N/30050023M	300	42,000	470*406*80



Vantage 42 Flood Light

The Vantage 42 flood light is cost-effective flood light without compromising exceptional performance.

The wattage range from 10W-50W are made in small, medium and large moulds. The Vantage 42 is a Driver On Board (DOB) flood light that is easy to install and versatile in application.



Applications

- Footpath
- Security aisle
- Billboard lighting
- Landscape lighting
- Perimeter lighting

Multiple lighting distribution optics makes it suitable for different applications

Wattage 10W / 20W / 30W / 50W
High efficiency up to 140 lm/W
4 different lumen packages from 1,400lm to 7,000lm
IP66 water tightness and IK08 impact resistance

Bracket allows $\pm 90^\circ$ rotation upwards and downwards
PIR sensor and microwave motion sensor is available
Life hours: (LM79/TM21)
56,000Hrs -L90
118,000Hrs -L80
187,000Hrs -L70

Vantage 42 Flood Light

The Vantage 42 is a high quality flood light suitable for general purpose lighting. PIR sensor and microwave motion sensor are available as options when selecting the Vantage 42. The Vantage 42 is a compact DOB flood light made with die-cast aluminium. The series focuses on the lower power range 10W / 20W / 30W / 50W, with high lumen output up to 140lm/W.

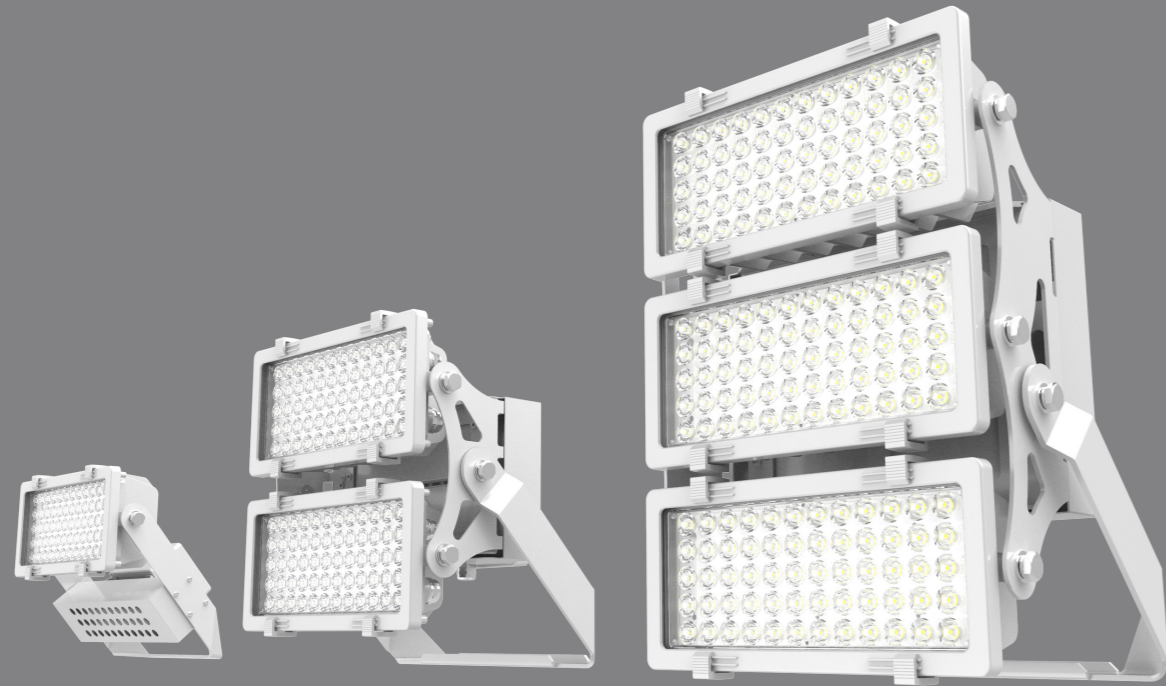


CODE	POWER (W)	LUMEN (LM)	DIMENSIONS (MM)
FLD4N/01050042	10	1,400	175*165*34
FLD4N/01050042	20	2,800	175*165*34
FLD4N/01050042	30	4,200	196*183*37
FLD4N/01050042	50	7,000	247*183*37



Vantage 13 High Mast

The high-quality ambient illumination of Vantage 13 high mast flood light contributes to a safe environment for any outdoor area. Its unique design creates a perfectly uniform visual appearance and outperforms conventional HID systems. With good performance of durability and versatility. The Vantage 13 can be used in applications where lightweight and high efficacy fixtures are required.



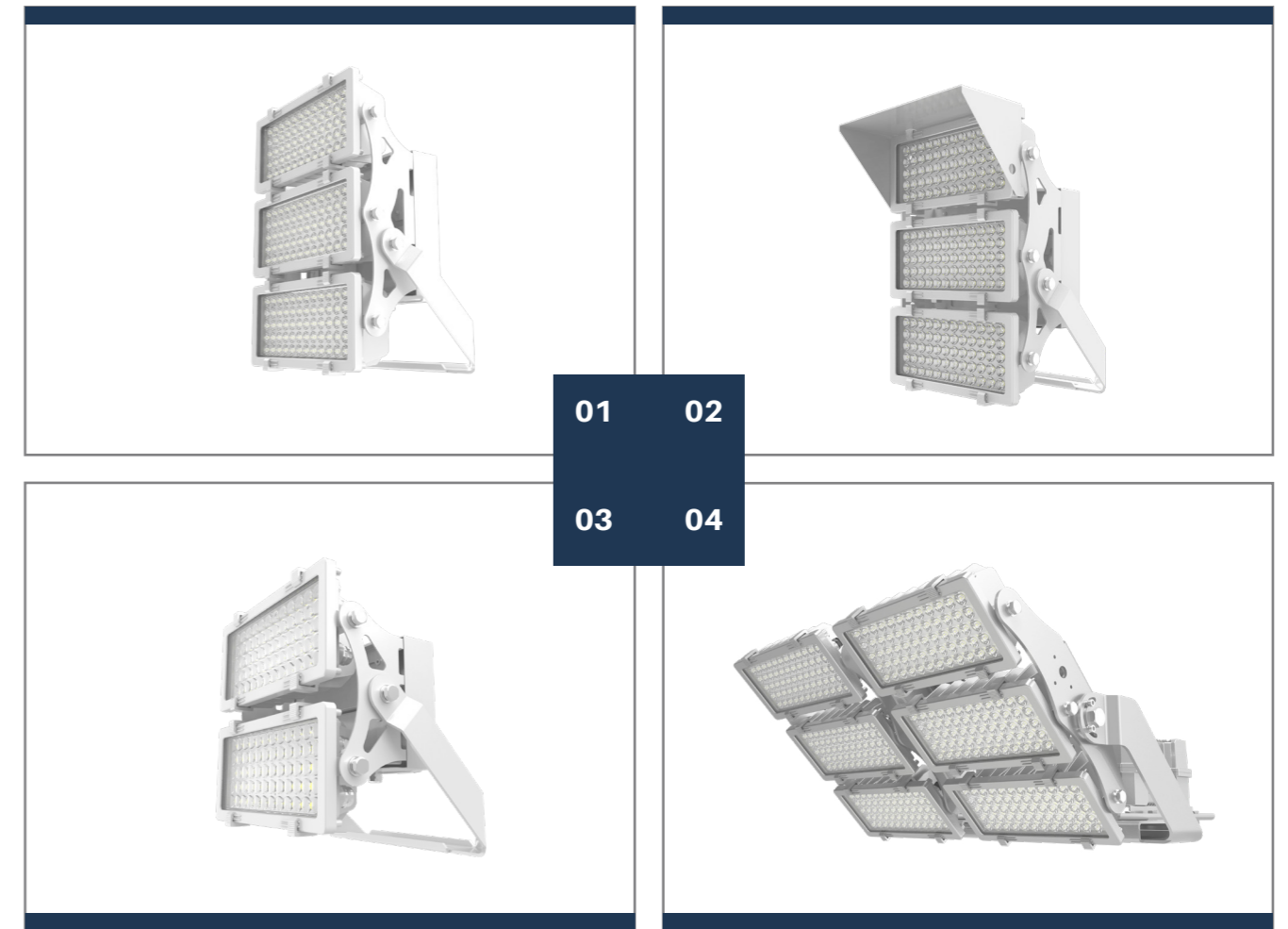
Applications
Sports Fields
Perimeter lighting
Docks
Airports
High mast security areas

Modular design from 200W to 1,200W
Efficiency up to 135lm/W
Provided with 10kV build-in surge protection devices

Multiple optics lens optional
10°/ 15°/30°/45°/60° and asymmetric
Life hours: (LM79 /TM21)
53,000 hrs-L90
111,000 hrs-L80
176,000 hrs-L70

Vantage 13 High Mast

The Vantage 13 high mast has exceptional performance both in illumination and longevity. With accurate positioning, the Vantage 13 can achieve perfect uniformity in sports fields. The Vantage13 has a wide range of beam angles making it a versatile high mast flood light for airports, docks, loading areas etc.



CODE	POWER (W)	LUMEN (LM)	DIMENSIONS (MM)
FLD2N/20050013	200	24,000	321*315*106
FLD2N/40050013	400	48,000	418*340*220
FLD2N/60050013	600	72,000	528*340*220
FLD2N/80050013	800	100,000	674*631*368
FLD2N/12050013	1,200	150,000	674*640*473
FLD4N/20050013	200	28,000	321*315*106
FLD4N/40050013	400	56,000	418*340*220
FLD4N/60050013	600	84,000	528*340*220
FLD4N/80050013	800	108,000	674*631*368
FLD4N/12050013	1,200	162,000	674*640*473



Vantage 28 High Mast

The Vantage 28 LED high mast / sports light is designed for high mounting applications, such as large sports fields, or large plazas. 600W/800W/1000W/1200W. With the narrow small beam angle the Vantage 28 can be positioned to minimise glare and control the uniformity. The modules can be adjusted vertically and horizontally.



Applications
Sports stadiums
Airports
Recreational fields

Single piece die-cast housing, lightweight and EPA<0.39Msq
Die-casting aluminium with special surface treatment ensure good corrosion resistance
600W / 800W / 1,000W / 1,200W optional
High lumen output from 84,000lm to 192,000lm optional
Narrow, wide, symmetrical and asymmetrical optics optional
Bracket and housing allows 360° adjustment

Driver box being attached to the bracket or remote optional
Smart control available in 0-10V, DALI, RDM DMX control
Life hours: (LM79 / TM21)
53,000hrs-L90
111,000hrs-L80
178,000hrs-L70
Ra 70 / Ra 80 / Ra90

Vantage 28 High Mast

The Vantage 28 is a professional lighting solution for sports lighting and high mast area lighting. It can meet the complex lighting requirements such as backlight control, upward light control, glare control and high lumen output without sacrificing uniformity.



CODE	POWER (W)	LUMEN (LM)	DIMENSIONS (MM)
FLD4N/60050028A	600	84,000	607*597*356
FLD4N/80050028A	800	112,000	607*597*356
FLD4N/100050028A	1,000	140,000	701*597*356
FLD4N/120050028A	1,200	168,000	701*597*356

